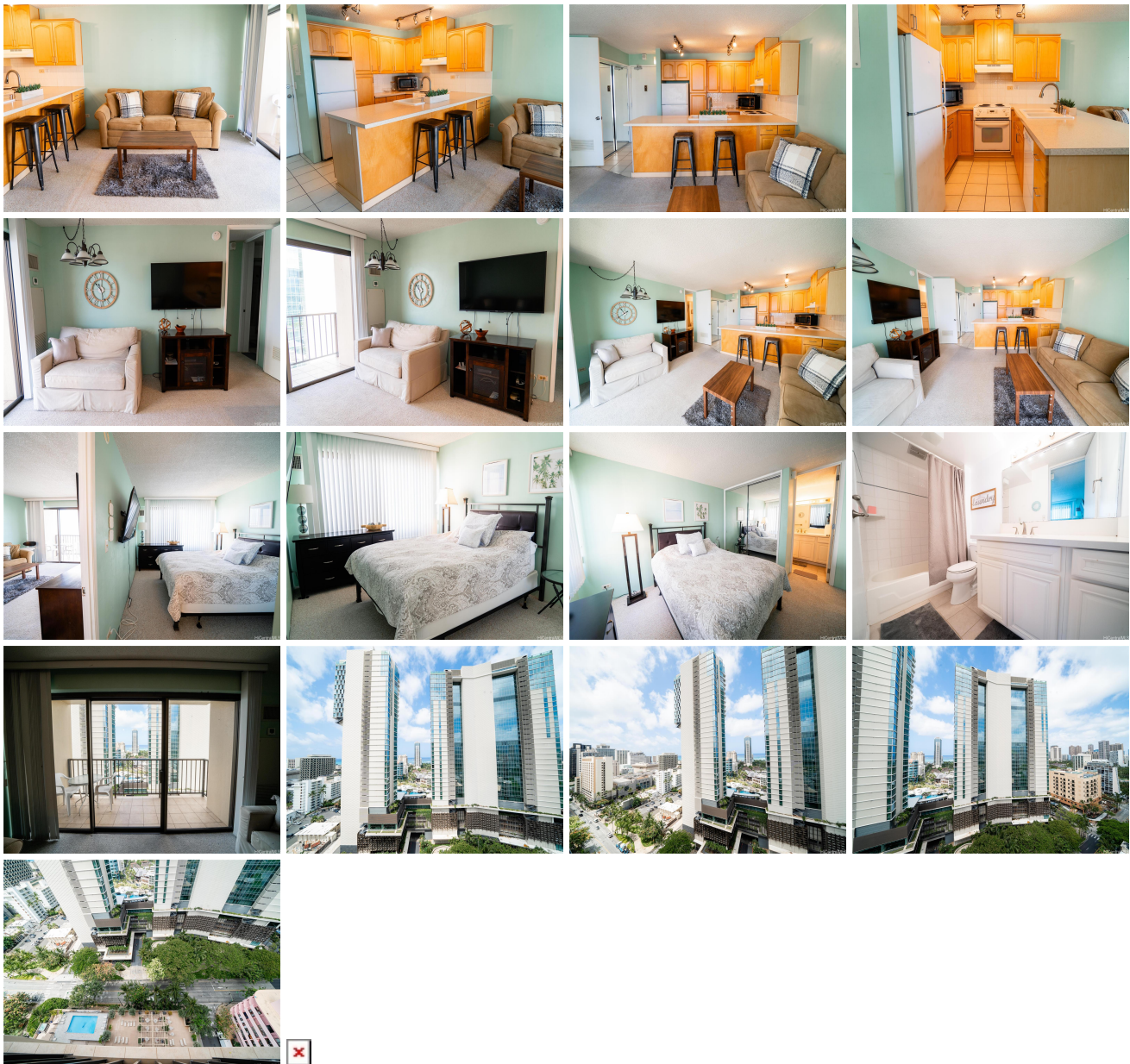


**Four Paddle 2140 Kuhio Avenue Unit 1907, Honolulu 96815 \* Four Paddle \* \$600,000**

Beds: <b>1</b>	MLS#: <b>202412505, FS</b>	Year Built: <b>1974</b>
Bath: <b>1/0</b>	Status: <b>Active</b>	Remodeled:
Living Sq. Ft.: <b>553</b>	List Date & DOM: <b>06-03-2024 &amp; 27</b>	Total Parking: <b>1</b>
Land Sq. Ft.: <b>31,320</b>	Condition: <b>Above Average</b>	<a href="#">Assessed Value</a>
Lanai Sq. Ft.: <b>0</b>	Frontage:	Building: <b>\$476,200</b>
Sq. Ft. Other: <b>0</b>	Tax/Year: <b>\$151/2023</b>	Land: <b>\$42,900</b>
Total Sq. Ft. <b>553</b>	Neighborhood: <b>Waikiki</b>	Total: <b>\$519,100</b>
Maint./Assoc. <b>\$977 / \$0</b>	<a href="#">Flood Zone</a> : <b>Zone AO - Tool</b>	Stories / CPR: <b>21+ / No</b>
Parking: <b>Covered - 1, Secured Entry</b>	Frontage:	
<a href="#">Zoning</a> : <b>X2 - Apartment Precinct</b>	View: <b>City</b>	

**Public Remarks:** Welcome to the Four Paddle condominium in the heart of Waikiki. Don't miss out on this one-bedroom, one-bath unit, furnished and ready to move in! Features include central AC, secured covered parking, an additional storage closet, and guest parking. Additional amenities include a pool, jacuzzi, BBQ areas, fitness center, sauna, surfboard and bike storage, 24/7 security, and a resident manager. Centrally located close to the famous Waikiki beach, shopping, dining, schools, Kapiolani Park, and much more. **Sale Conditions:** None **Schools:** [Jefferson](#), [Washington](#), [Kaimuki](#) \* [Request Showing](#), [Photos](#), [History](#), [Maps](#), [Deed](#), [Watch List](#), [Tax Info](#)



Address	Price	Bd & Bth	Living / Avg.	Land   Avg.	Lanai	Occ.	FL	DOM
<a href="#">2140 Kuhio Avenue 1907</a>	<b>\$600,000</b>	1 & 1/0	553   \$1,085	31,320   \$19	0	38%	19	27

Address	Tax   Maint.   Ass.	Assessed Land	Assessed Building	Assessed Total	Ratio	Year & Remodeled
<a href="#">2140 Kuhio Avenue 1907</a>	\$151   \$977   \$0	\$42,900	\$476,200	\$519,100	116%	1974 & NA

[2140 Kuhio Avenue 1907](#) - MLS#: [202412505](#) - Welcome to the Four Paddle condominium in the heart of Waikiki. Don't miss out on this one-bedroom, one-bath unit, furnished and ready to move in! Features include central AC, secured covered parking, an additional storage closet, and guest parking. Additional amenities include a pool, jacuzzi, BBQ areas, fitness center, sauna, surfboard and bike storage, 24/7 security, and a resident manager. Centrally located close to the famous Waikiki beach, shopping, dining, schools, Kapiolani Park, and much more. **Region:** Metro **Neighborhood:** Waikiki **Condition:** Above Average **Parking:** Covered - 1, Secured Entry **Total Parking:** 1 **View:** City **Frontage:** **Pool:** **Zoning:** X2 - Apartment Precinct **Sale Conditions:** None **Schools:** [Jefferson](#), [Washington](#), [Kaimuki](#) \* [Request Showing](#), [Photos](#), [History](#), [Maps](#), [Deed](#), [Watch List](#), [Tax Info](#)

DOM = Days on Market, Occ. = Occupancy, FL = Floor Number