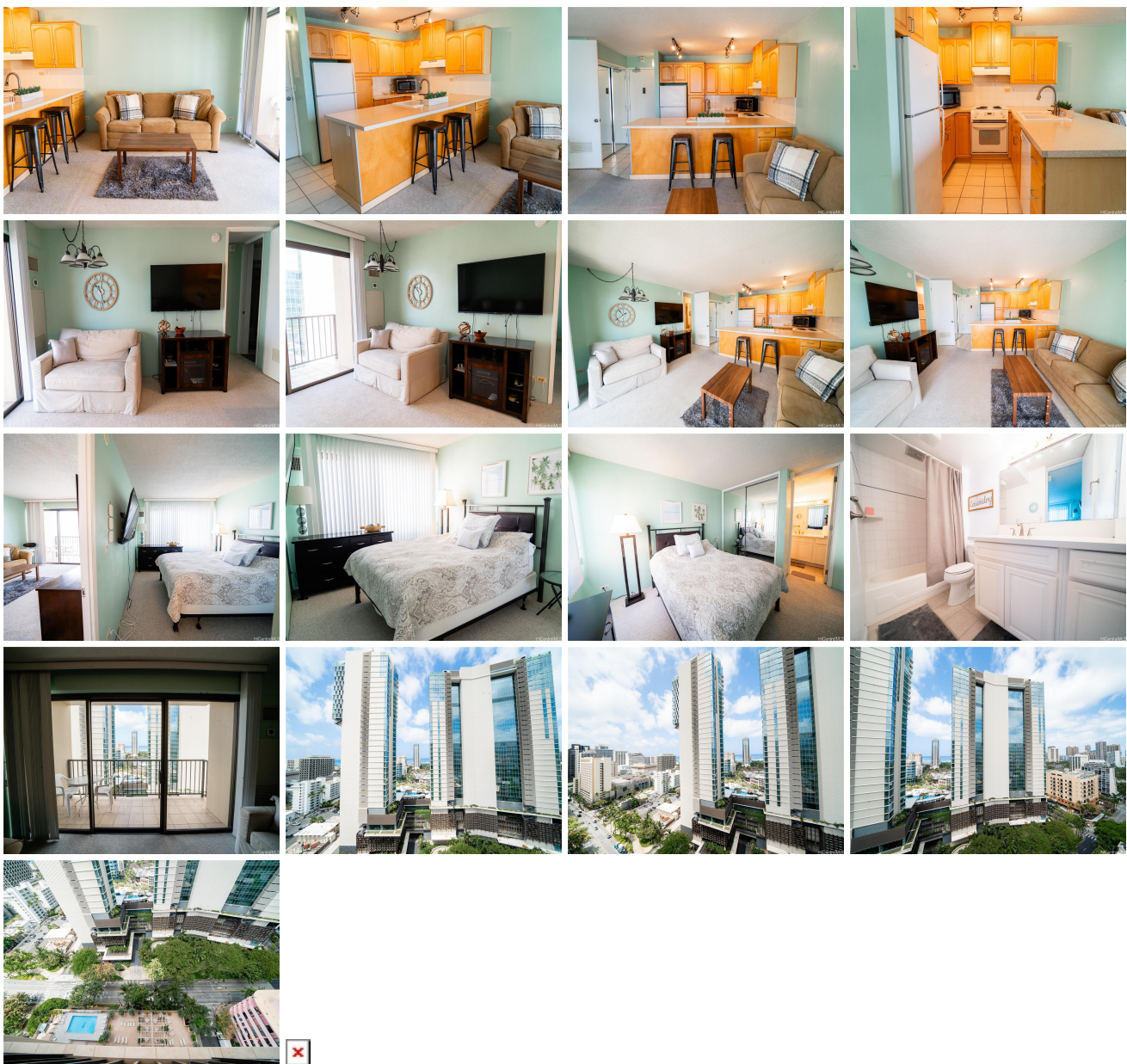


Four Paddle 2140 Kuhio Avenue Unit 1907, Honolulu 96815 * \$600,000

Beds: 1	MLS#: 202412505, FS	Year Built: 1974
Bath: 1/0	Status: Active	Remodeled:
Living Sq. Ft.: 553	List Date & DOM: 06-03-2024 & 24	Total Parking: 1
Land Sq. Ft.: 31,320	Condition: Above Average	Assessed Value
Lanai Sq. Ft.: 0	Frontage:	Building: \$476,200
Sq. Ft. Other: 0	Tax/Year: \$151/2023	Land: \$42,900
Total Sq. Ft. 553	Neighborhood: Waikiki	Total: \$519,100
Maint./Assoc. \$977 / \$0	Flood Zone : Zone AO - Tool	Stories / CPR: 21+ / No
Parking: Covered - 1, Secured Entry	Frontage:	
Zoning : X2 - Apartment Precinct	View: City	

Public Remarks: Welcome to the Four Paddle condominium in the heart of Waikiki. Don't miss out on this one-bedroom, one-bath unit, furnished and ready to move in! Features include central AC, secured covered parking, an additional storage closet, and guest parking. Additional amenities include a pool, jacuzzi, BBQ areas, fitness center, sauna, surfboard and bike storage, 24/7 security, and a resident manager. Centrally located close to the famous Waikiki beach, shopping, dining, schools, Kapiolani Park, and much more. **Sale Conditions:** None **Schools:** [Jefferson](#), [Washington](#), [Kaimuki](#) * [Request Showing](#), [Photos](#), [History](#), [Maps](#), [Deed](#), [Watch List](#), [Tax Info](#)



Address	Price	Bd & Bth	Living / Avg.	Land Avg.	DOM
2140 Kuhio Avenue 1907	\$600,000	1 & 1/0	553 \$1,085	31,320 \$19	24

Address	Tax Maint. Ass.	Assessed Land	Assessed Building	Assessed Total	Ratio	Year & Remodeled
2140 Kuhio Avenue 1907	\$151 \$977 \$0	\$42,900	\$476,200	\$519,100	116%	1974 & NA

[2140 Kuhio Avenue 1907](#) - MLS#: [202412505](#) - Welcome to the Four Paddle condominium in the heart of Waikiki. Don't miss out on this one-bedroom, one-bath unit, furnished and ready to move in! Features include central AC, secured covered parking, an additional storage closet, and guest parking. Additional amenities include a pool, jacuzzi, BBQ areas, fitness center, sauna, surfboard and bike storage, 24/7 security, and a resident manager. Centrally located close to the famous Waikiki beach, shopping, dining, schools, Kapiolani Park, and much more. **Region:** Metro **Neighborhood:** Waikiki **Condition:** Above Average **Parking:** Covered - 1, Secured Entry **Total Parking:** 1 **View:** City **Frontage:** **Pool:** **Zoning:** X2 - Apartment Precinct **Sale Conditions:** None **Schools:** [Jefferson](#), [Washington](#), [Kaimuki](#) * [Request Showing](#), [Photos](#), [History](#), [Maps](#), [Deed](#), [Watch List](#), [Tax Info](#)

DOM = Days on Market