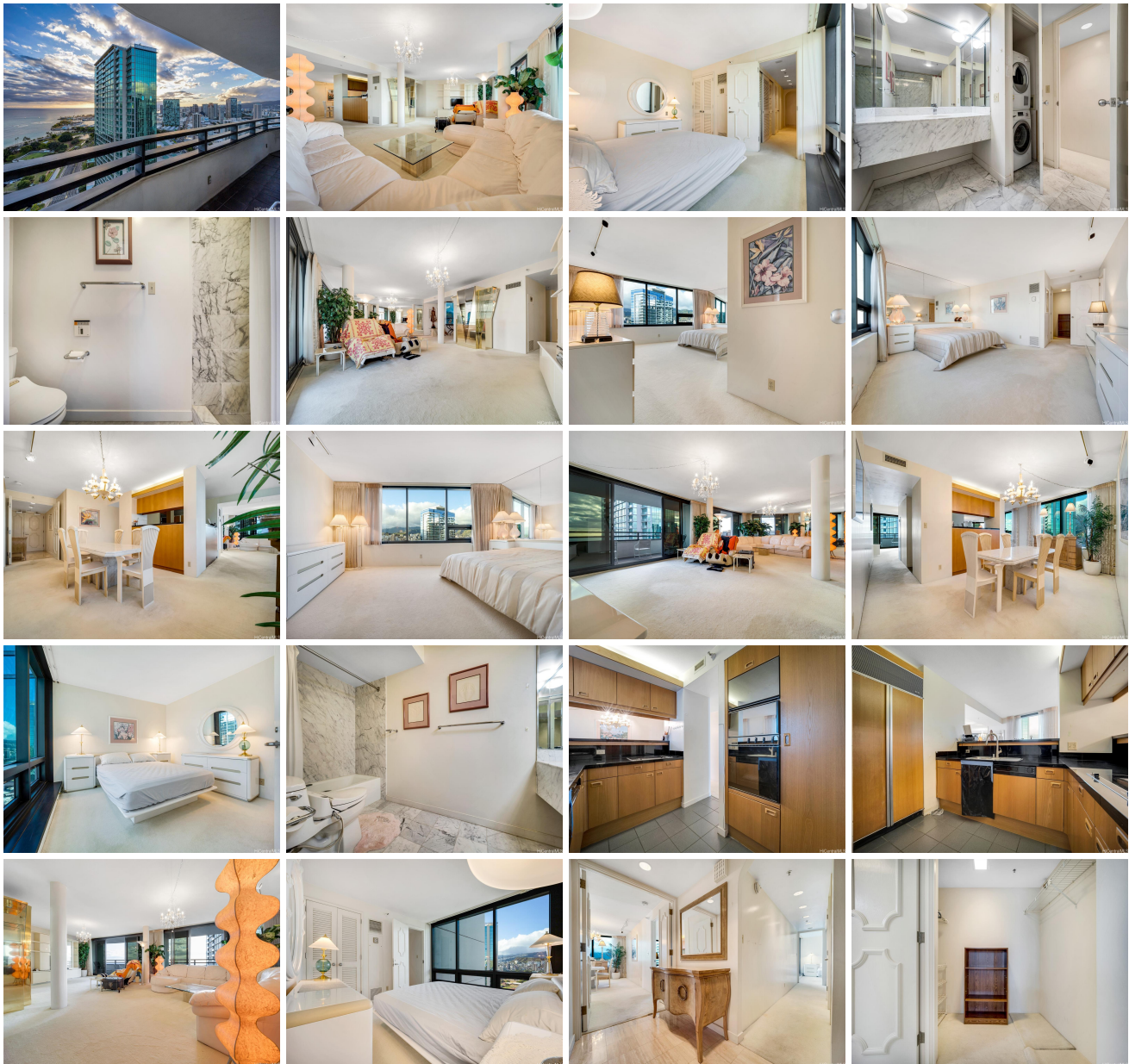


Nauru Tower 1330 Ala Moana Boulevard Unit 3501, Honolulu 96814 * Nauru Tower *

\$1,330,000 * Originally \$1,410,000

Beds: 2	MLS#: 202412507, FS	Year Built: 1990
Bath: 2/0	Status: Active	Remodeled:
Living Sq. Ft.: 1,892	List Date & DOM: 06-03-2024 & 44	Total Parking: 2
Land Sq. Ft.: 135,472	Condition: Excellent	Assessed Value
Lanai Sq. Ft.: 288	Frontage:	Building: \$1,765,100
Sq. Ft. Other: 0	Tax/Year: \$1,206/2023	Land: \$153,100
Total Sq. Ft. 2,180	Neighborhood: Kakaako	Total: \$1,918,200
Maint./Assoc. \$2,992 / \$0	Flood Zone : Zone AE - Tool	Stories / CPR: 21+ / No
Parking: Covered - 2	Frontage:	
Zoning : Kak - Kakaako Community Development Project	View: City, Ocean, Sunset	

Public Remarks: This 2 Bedroom / 2 bath unit comes fully furnished with all linens & Kitchenware and Ocean and Sunset View! Gorgeous, spacious, high floor corner unit with a beautiful ocean view in Nauru Tower is yours. Total sqft. of 2180!! 2 parking and storage. Walking distance to Ala Moana Center, Ward Village, beach and many restaurants. **Sale Conditions:** None **Schools:** , , * [Request Showing](#), [Photos](#), [History](#), [Maps](#), [Deed](#), [Watch List](#), [Tax Info](#)





Address	Price	Bd & Bth	Living / Avg.	Land Avg.	Lanai	Occ.	FL	DOM
1330 Ala Moana Boulevard 3501	\$1,330,000	2 & 2/0	1,892 \$703	135,472 \$10	288	25%	35	44

Address	Tax Maint. Ass.	Assessed Land	Assessed Building	Assessed Total	Ratio	Year & Remodeled
1330 Ala Moana Boulevard 3501	\$1,206 \$2,992 \$0	\$153,100	\$1,765,100	\$1,918,200	69%	1990 & NA

[1330 Ala Moana Boulevard 3501](#) - MLS#: [202412507](#) - Original price was \$1,410,000 - This 2 Bedroom / 2 bath unit comes fully furnished with all linens & Kitchenware and Ocean and Sunset View! Gorgeous, spacious, high floor corner unit with a beautiful ocean view in Nauru Tower is yours. Total sqft. of 2180!! 2 parking and storage. Walking distance to Ala Moana Center, Ward Village, beach and many restaurants. **Region:** Metro **Neighborhood:** Kakaako **Condition:** Excellent **Parking:** Covered - 2 **Total Parking:** 2 **View:** City, Ocean, Sunset **Frontage:** **Pool:** **Zoning:** Kak - Kakaako Community Development Project **Sale Conditions:** None **Schools:** , , * [Request Showing](#), [Photos](#), [History](#), [Maps](#), [Deed](#), [Watch List](#), [Tax Info](#)

DOM = Days on Market, Occ. = Occupancy, FL = Floor Number