

91-1181 Kaileolea Drive, Ewa Beach 96706 * * \$925,000

Beds: **3**

MLS#: **202412517, FS**

Year Built: **2005**

Bath: **2/1**

Status: **Active Under Contract**

Remodeled:

Living Sq. Ft.: **1,510**

List Date & DOM: **06-05-2024 & 4**

Total Parking: **3**

Land Sq. Ft.: **3,583**

Condition: **Above Average**

[Assessed Value](#)

Lanai Sq. Ft.: **0**

Frontage:

Building: **\$317,000**

Sq. Ft. Other: **0**

Tax/Year: **\$272/2023**

Land: **\$615,200**

Total Sq. Ft. **1,510**

Neighborhood: **Ocean Pointe**

Total: **\$932,200**

Maint./Assoc. **\$0 / \$118**

[Flood Zone](#): **Zone D - Tool**

Stories / CPR: **Two / No**

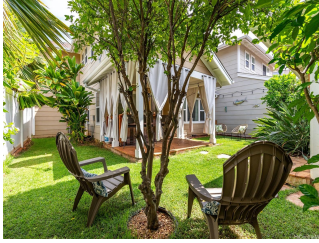
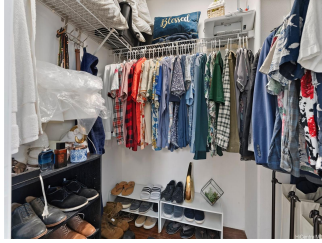
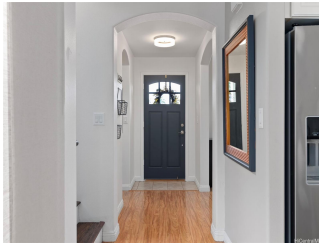
Parking: **3 Car+, Driveway, Garage**

Frontage:

[Zoning](#): **11 - A-1 Low Density Apartment**

View: **None**

Public Remarks: Welcome home to Ocean Pointe! This property offers 3 bedrooms, 2 ½ baths, covered lanai with custom built in bar and a 2-car garage with an extra parking space which embodies an ideal blend of comfort, convenience, and functionality for many homeowners. This manageable yet spacious living environment offers flexibility in use; to include the front den that can serve as guest space, a home office, or even a craft room, providing ample space for various household needs. Open concept kitchen layout into dining and back living area makes it a breeze to entertain! These homes often come with the perks of individual ownership, such as private yards or patios, allowing for personalization and outdoor activities. The blend of communal living with personal space makes this type of home an attractive option for those seeking a balance between privacy and a sense of belonging within a community. PUBLIC OPEN HOUSE TODAY June 9th 2:00-5:00pm. **Sale Conditions:** None **Schools:** [Ewa Beach](#), [Ewa Makai](#), [Campbell](#) * [Request Showing](#), [Photos](#), [History](#), [Maps](#), [Deed](#), [Watch List](#), [Tax Info](#)





Address	Price	Bd & Bth	Living / Avg.	Land Avg.	Lanai	Occ.	FL	DOM
91-1181 Kaileolea Drive	\$925,000	3 & 2/1	1,510 \$613	3,583 \$258	0	0%	0	4

Address	Tax Maint. Ass.	Assessed Land	Assessed Building	Assessed Total	Ratio	Year & Remodeled
91-1181 Kaileolea Drive	\$272 \$0 \$118	\$615,200	\$317,000	\$932,200	99%	2005 & NA

[91-1181 Kaileolea Drive](#) - MLS#: [202412517](#) - Welcome home to Ocean Pointe! This property offers 3 bedrooms, 2 ½ baths, covered lanai with custom built in bar and a 2-car garage with an extra parking space which embodies an ideal blend of comfort, convenience, and functionality for many homeowners. This manageable yet spacious living environment offers flexibility in use; to include the front den that can serve as guest space, a home office, or even a craft room, providing ample space for various household needs. Open concept kitchen layout into dining and back living area makes it a breeze to entertain! These homes often come with the perks of individual ownership, such as private yards or patios, allowing for personalization and outdoor activities. The blend of communal living with personal space makes this type of home an attractive option for those seeking a balance between privacy and a sense of belonging within a community. PUBLIC OPEN HOUSE TODAY June 9th 2:00-5:00pm. **Region:** Ewa Plain **Neighborhood:** Ocean Pointe **Condition:** Above Average **Parking:** 3 Car+, Driveway, Garage **Total Parking:** 3 **View:** None **Frontage:** **Pool:** None **Zoning:** 11 - A-1 Low Density Apartment **Sale Conditions:** None **Schools:** [Ewa Beach](#), [Ewa Makai](#), [Campbell](#) * [Request Showing](#), [Photos](#), [History](#), [Maps](#), [Deed](#), [Watch List](#), [Tax Info](#)

DOM = Days on Market, Occ. = Occupancy, FL = Floor Number