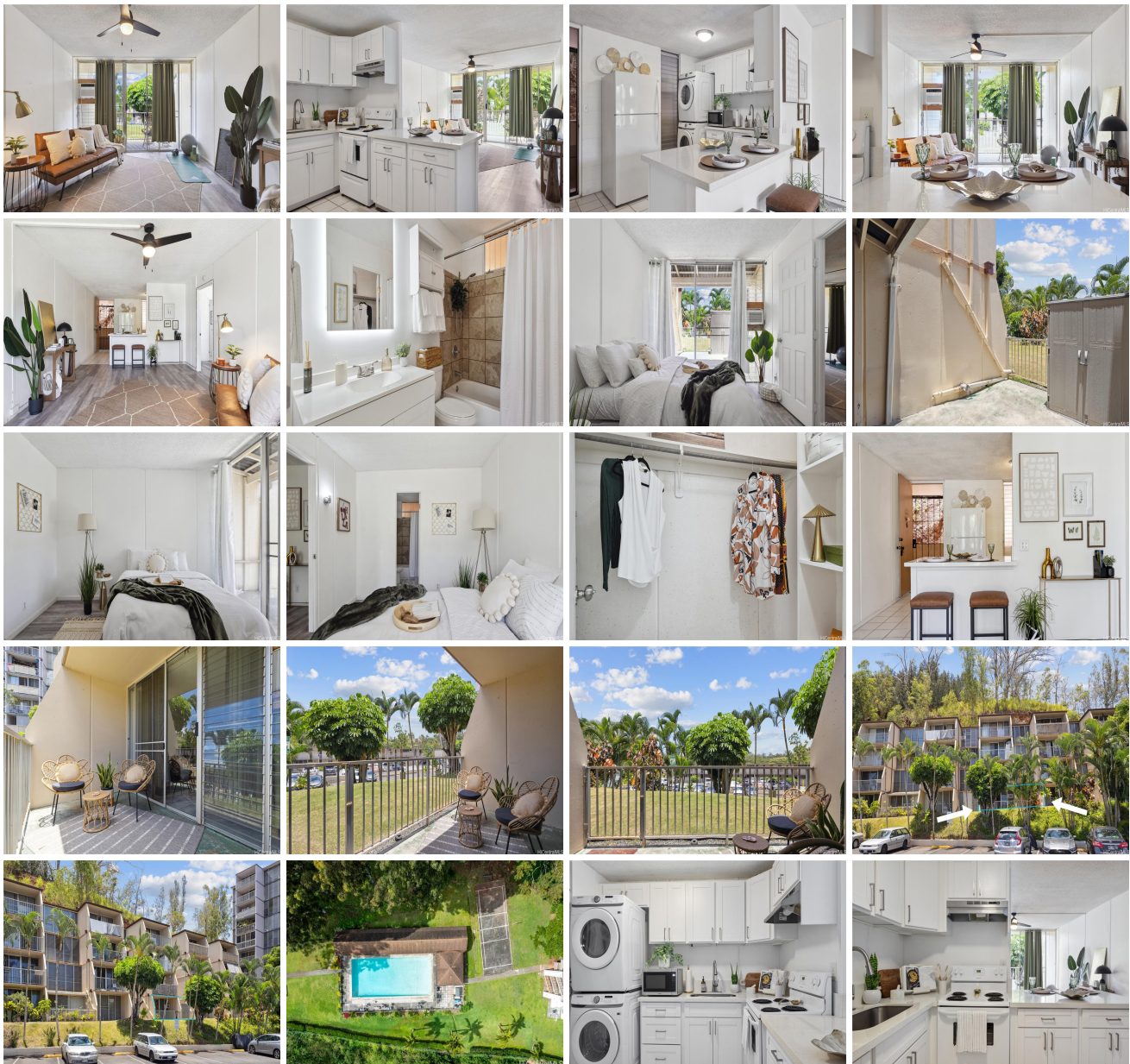


Cathedral Pt-Melemanu 95-014 Waihonu Street Unit E103, Mililani 96789 * \$359,000

Beds: 1	MLS#: 202412550, FS	Year Built: 1973
Bath: 1/0	Status: Active	Remodeled: 2022
Living Sq. Ft.: 607	List Date & DOM: 06-12-2024 & 14	Total Parking: 1
Land Sq. Ft.: 0	Condition: Above Average, Average	Assessed Value
Lanai Sq. Ft.: 97	Frontage:	Building: \$260,300
Sq. Ft. Other: 0	Tax/Year: \$97/2024	Land: \$79,000
Total Sq. Ft. 704	Neighborhood: Waipio Acres-waikalani Woodlands	Total: \$339,300
Maint./Assoc. \$608 / \$0	Flood Zone : Zone D - Tool	Stories / CPR: / No
Parking: Assigned, Open - 1	Frontage:	
Zoning : 11 - A-1 Low Density Apartment	View: Garden, Mountain	

Public Remarks: Rarely available bottom floor unit nestled in the desirable city of Mililani! This spacious one-bedroom condo has an upgraded in-unit washer and dryer, two AC, quartz countertop, new modern fixtures, a walk-in closet, and two large lanais with a bonus shed! Conveniently located minutes away from Schofield Barracks, various shopping centers, a nearby basketball court, community rec center, complete with a pool park and playground. Water and sewer are included in the maintenance fee. Come on by and see all that this amazing community has to offer! Pet friendly! - Open House Friday 5:00 - 7:00PM | Saturday & Sunday 2:00-5:00 PM. **Sale Conditions:** None **Schools:** [Kipapa](#), [Mililani](#), [Mililani](#) * [Request Showing](#), [Photos](#), [History](#), [Maps](#), [Deed](#), [Watch List](#), [Tax Info](#)





Address	Price	Bd & Bth	Living / Avg.	Land Avg.	DOM
95-014 Waihonu Street E103	\$359,000	1 & 1/0	607 \$591	0 \$inf	14

Address	Tax Maint. Ass.	Assessed Land	Assessed Building	Assessed Total	Ratio	Year & Remodeled
95-014 Waihonu Street E103	\$97 \$608 \$0	\$79,000	\$260,300	\$339,300	106%	1973 & 2022

[95-014 Waihonu Street E103](#) - MLS#: [202412550](#) - Rarely available bottom floor unit nestled in the desirable city of Mililani! This spacious one-bedroom condo has an upgraded in-unit washer and dryer, two AC, quartz countertop, new modern fixtures, a walk-in closet, and two large lanais with a bonus shed! Conveniently located minutes away from Schofield Barracks, various shopping centers, a nearby basketball court, community rec center, complete with a pool park and playground. Water and sewer are included in the maintenance fee. Come on by and see all that this amazing community has to offer! Pet friendly! - Open House Friday 5:00 - 7:00PM | Saturday & Sunday 2:00-5:00 PM. **Region:** Central
Neighborhood: Waipio Acres-waikalani Woodlands **Condition:** Above Average, Average **Parking:** Assigned, Open - 1 **Total Parking:** 1 **View:** Garden, Mountain **Frontage:** **Pool:** **Zoning:** 11 - A-1 Low Density Apartment **Sale Conditions:** None
Schools: [Kipapa](#), [Mililani](#), [Mililani](#) * [Request Showing](#), [Photos](#), [History](#), [Maps](#), [Deed](#), [Watch List](#), [Tax Info](#)

DOM = Days on Market