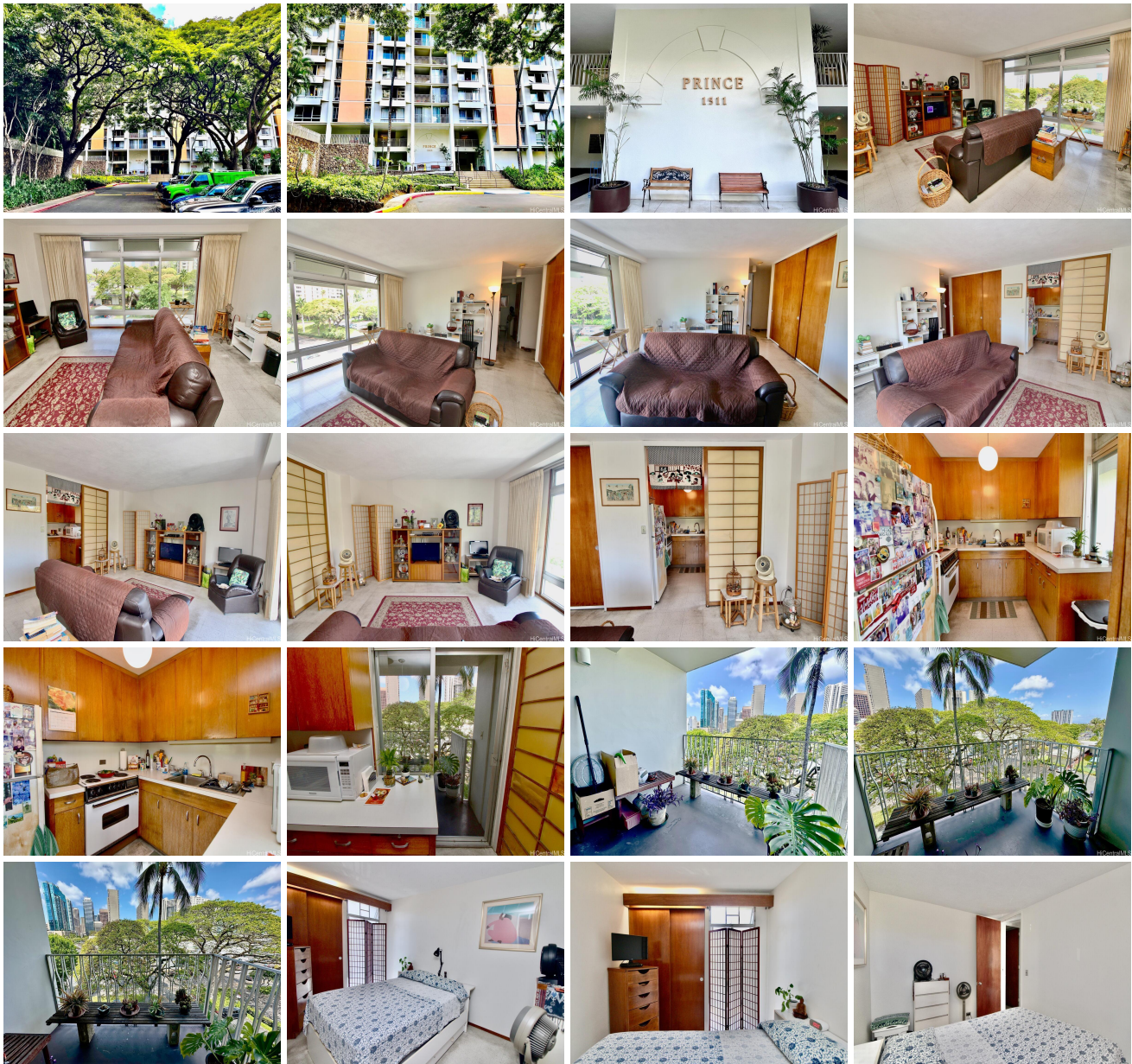
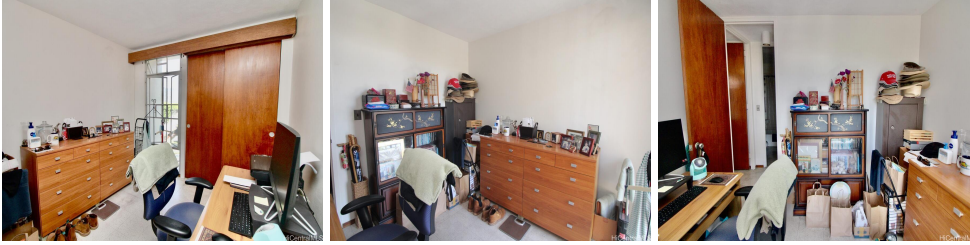


Queen Emma Gardens 1511 Nuuanu Avenue Unit 338, Honolulu 96817 * Queen Emma Gardens * \$395,000 * Originally \$385,000

Beds: 2	MLS#: 202412552, FS	Year Built: 1963
Bath: 1/0	Status: Active	Remodeled:
Living Sq. Ft.: 674	List Date & DOM: 06-07-2024 & 21	Total Parking: 1
Land Sq. Ft.: 0	Condition: Average	Assessed Value
Lanai Sq. Ft.: 66	Frontage:	Building: \$238,300
Sq. Ft. Other: 0	Tax/Year: \$102/2023	Land: \$111,500
Total Sq. Ft. 740	Neighborhood: Downtown	Total: \$349,800
Maint./Assoc. \$1,075 / \$0	Flood Zone: Zone X - Tool	Stories / CPR: One / No
Parking: Assigned, Covered - 1, Guest	Frontage:	
Zoning: 12 - A-2 Medium Density Apartme	View: City, Garden	

Public Remarks: Prince Tower, quiet garden view. Spacious 2/1 with 1 covered parking. Occupied by Tenure Tenant, ask agent for details. Pet friendly (verify). Enjoy secured 8-acres well maintained garden with 8 BBQ areas, jogging/walking path, Dog walking with dog waste bins, 2 pools including kiddie pool, 2 of Tea Houses are available for social occasions, with bathrooms, full kitchen, tables and chairs. Nice Koi Pond, birds gathering peacefully. Super convenient location, walking distance to Downtown Business District, Nice upscale restaurants and enjoy First Friday art district, Chinatown for shopping. Safeway/Longs Drugs are just across, Starbucks, Poke store, Local restaurants are also across. Queens Medical Center, Kuakini Hospital are only couple blocks away. Close to H-1 Freeway entrance both East and West bound. You will enjoy the sophisticated property. Don't miss this Gem-like life. **Sale Conditions:** None **Schools:** [Royal](#), [Keelikolani](#), [Mckinley](#) * [Request Showing, Photos, History, Maps, Deed, Watch List, Tax Info](#)





Address	Price	Bd & Bth	Living / Avg.	Land Avg.	Lanai	Occ.	FL	DOM
1511 Nuuanu Avenue 338	\$395,000	2 & 1/0	674 \$586	0 \$inf	66	50%	3	21

Address	Tax Maint. Ass.	Assessed Land	Assessed Building	Assessed Total	Ratio	Year & Remodeled
1511 Nuuanu Avenue 338	\$102 \$1,075 \$0	\$111,500	\$238,300	\$349,800	113%	1963 & NA

[1511 Nuuanu Avenue 338](#) - MLS#: [202412552](#) - Original price was \$385,000 - Prince Tower, quiet garden view. Spacious 2/1 with 1 covered parking. Occupied by Tenure Tenant, ask agent for details. Pet friendly (verify). Enjoy secured 8-acres well maintained garden with 8 BBQ areas, jogging/walking path, Dog walking with dog waste bins, 2 pools including kiddie pool, 2 of Tea Houses are available for social occasions, with bathrooms, full kitchen, tables and chairs. Nice Koi Pond, birds gathering peacefully. Super convenient location, walking distance to Downtown Business District, Nice upscale restaurants and enjoy First Friday art district, Chinatown for shopping. Safeway/Longs Drugs are just across, Starbucks, Poke store, Local restaurants are also across. Queens Medical Center, Kuakini Hospital are only couple blocks away. Close to H-1 Freeway entrance both East and West bound. You will enjoy the sophisticated property. Don't miss this Gem-like life. **Region:** Metro **Neighborhood:** Downtown **Condition:** Average **Parking:** Assigned, Covered - 1, Guest **Total Parking:** 1 **View:** City, Garden **Frontage:** **Pool:** **Zoning:** 12 - A-2 Medium Density Apartme **Sale Conditions:** None **Schools:** [Royal](#), [Keelikolani](#), [Mckinley](#) * [Request Showing](#), [Photos](#), [History](#), [Maps](#), [Deed](#), [Watch List](#), [Tax Info](#)

DOM = Days on Market, Occ. = Occupancy, FL = Floor Number