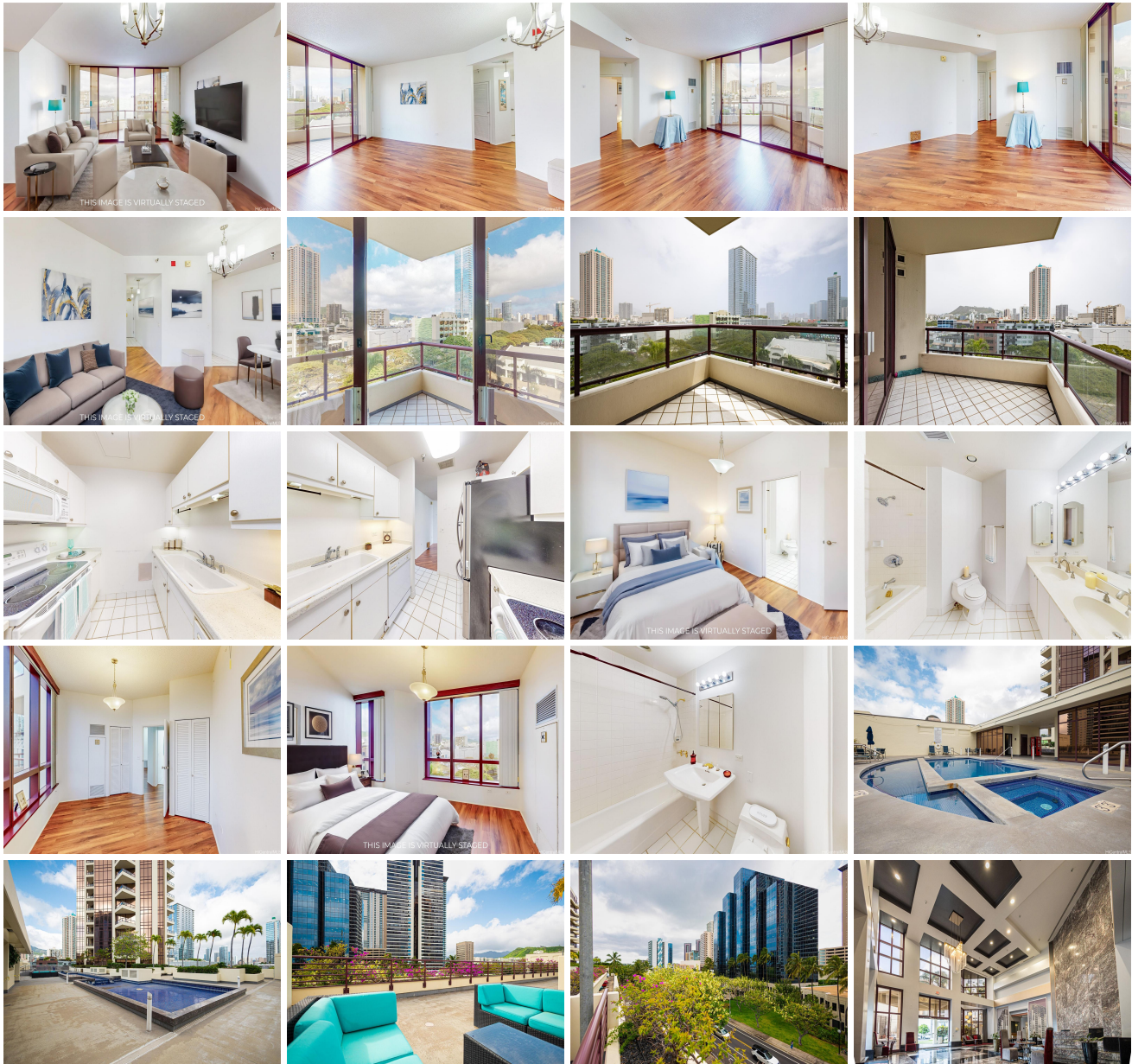


# **Imperial Plaza 725 Kapiolani Boulevard Unit 806, Honolulu 96813 \* \$585,000**

Beds: <b>2</b>	MLS#: <b><u>202412556</u>, FS</b>	Year Built: <b>1991</b>
Bath: <b>2/0</b>	Status: <b>Active</b>	Remodeled:
Living Sq. Ft.: <b>911</b>	List Date & DOM: <b>06-05-2024 &amp; 23</b>	Total Parking: <b>1</b>
Land Sq. Ft.: <b>110,294</b>	Condition: <b>Average</b>	<a href="#">Assessed Value</a>
Lanai Sq. Ft.: <b>0</b>	Frontage:	Building: <b>\$432,700</b>
Sq. Ft. Other: <b>0</b>	Tax/Year: <b>\$95/2023</b>	Land: <b>\$93,900</b>
Total Sq. Ft. <b>911</b>	Neighborhood: <b>Kakaako</b>	Total: <b>\$526,600</b>
Maint./Assoc. <b>\$1,330 / \$0</b>	<a href="#">Flood Zone</a> : <b>Zone X - Tool</b>	Stories / CPR: <b>8-14 / No</b>
Parking: <b>Covered - 1, Guest, Secured Entry, Street</b>	Frontage:	
<a href="#">Zoning</a> : <b>Kak - Kakaako Community Development Project</b>	View: <b>City, Mountain</b>	

**Public Remarks:** Welcome to your urban oasis at Imperial Plaza! This spacious 2-bedroom, 2-bathroom condo offers stunning views of the city and mountains, creating a serene and picturesque backdrop. The unit features laminated flooring throughout, adding a touch of modern elegance. With an assigned parking stall, convenience is at your doorstep. Imperial Plaza boasts a range of amenities, including a bbq area, pool and sauna recreation area, resident manager, and dog park, providing the total package of relaxation and leisure. Located near parks, commercial areas, schools, and essential services such as the police and fire department, this condo offers the perfect blend of convenience and comfort. Don't miss out on this incredible opportunity to own a piece of urban paradise. Schedule your showing today! **Sale Conditions:** None **Schools:** , , \* [Request Showing](#), [Photos](#), [History](#), [Maps](#), [Deed](#), [Watch List](#), [Tax Info](#)





Address	Price	Bd & Bth	Living / Avg.	Land   Avg.	DOM
<a href="#">725 Kapiolani Boulevard 806</a>	<a href="#">\$585,000</a>	2 & 2/0	911   \$642	110,294   \$5	23

Address	Tax   Maint.   Ass.	Assessed Land	Assessed Building	Assessed Total	Ratio	Year & Remodeled
<a href="#">725 Kapiolani Boulevard 806</a>	\$95   \$1,330   \$0	\$93,900	\$432,700	\$526,600	111%	1991 & NA

[725 Kapiolani Boulevard 806](#) - MLS#: [202412556](#) - Welcome to your urban oasis at Imperial Plaza! This spacious 2-bedroom, 2-bathroom condo offers stunning views of the city and mountains, creating a serene and picturesque backdrop. The unit features laminated flooring throughout, adding a touch of modern elegance. With an assigned parking stall, convenience is at your doorstep. Imperial Plaza boasts a range of amenities, including a bbq area, pool and sauna recreation area, resident manager, and dog park, providing the total package of relaxation and leisure. Located near parks, commercial areas, schools, and essential services such as the police and fire department, this condo offers the perfect blend of convenience and comfort. Don't miss out on this incredible opportunity to own a piece of urban paradise. Schedule your showing today!

**Region:** Metro **Neighborhood:** Kakaako **Condition:** Average **Parking:** Covered - 1, Guest, Secured Entry, Street **Total Parking:** 1 **View:** City, Mountain **Frontage:** **Pool:** **Zoning:** Kak - Kakaako Community Development Project **Sale Conditions:** None **Schools:** , , \* [Request Showing](#), [Photos](#), [History](#), [Maps](#), [Deed](#), [Watch List](#), [Tax Info](#)

DOM = Days on Market