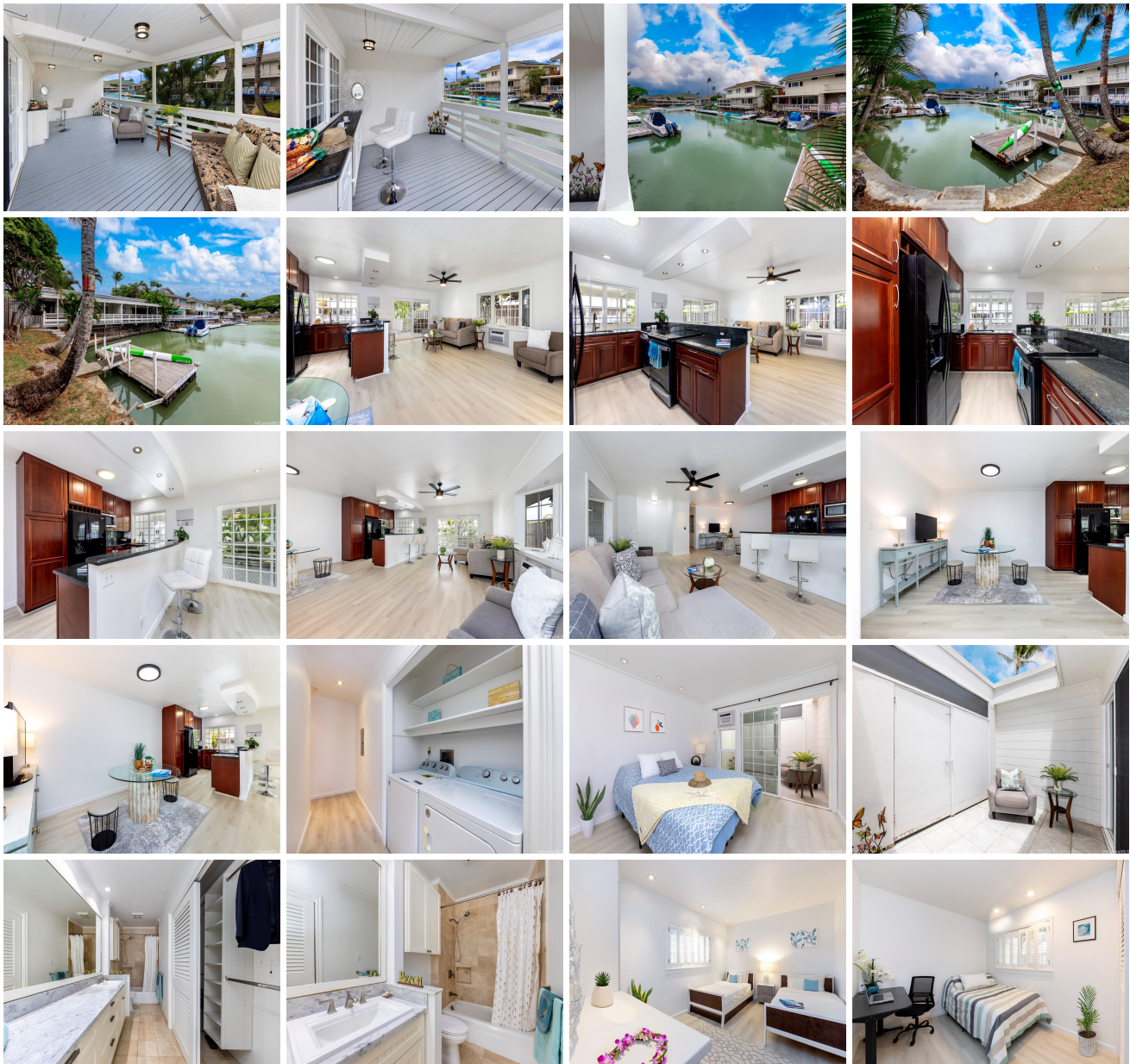


Kuapa Isle 301 Opihikao Place Unit 472, Honolulu 96825 * Kuapa Isle * \$1,300,000

Beds: 3	MLS#: 202412561, FS	Year Built: 1970
Bath: 2/0	Status: Active Under Contract	Remodeled: 2024
Living Sq. Ft.: 1,164	List Date & DOM: 06-04-2024 & 7	Total Parking: 2
Land Sq. Ft.: 1,114,352	Condition: Above Average	Assessed Value
Lanai Sq. Ft.: 400	Frontage: Marina	Building: \$737,200
Sq. Ft. Other: 0	Tax/Year: \$484/2023	Land: \$421,300
Total Sq. Ft. 1,564	Neighborhood: West Marina	Total: \$1,158,500
Maint./Assoc. \$975 / \$0	Flood Zone : Zone AE - Tool	Stories / CPR: One / No
Parking: Assigned, Carport, Covered - 2, Guest, Secured Entry	Frontage: Marina	
Zoning : 05 - R-5 Residential District	View: Marina/Canal, Mountain	

Public Remarks: Kuapa Isle is one of Honolulu's premier marina-front townhome communities. Enjoy life on the ocean with this rarely available, marina-front 3-bedroom, 2-bath residence that includes a deeded boat dock for your water activities. Inside you'll find a well-maintained home that shows beautifully, with an open-concept main living area, large covered lanai overlooking the marina, and recent upgrades including new flooring and fresh paint throughout. A thoughtful floor plan places the 3 bedrooms opposite of the primary living areas for added privacy. The primary bedroom suite includes its own private sun lanai and resort-style bathroom, adding an additional touch of luxury. This well-managed community offers a large swimming pool, basketball courts, dog parks, a boat launch and boat parking, club house, and more. Minutes from Hawaii Kai Town Center, easy access to Kalaniana'ole Hwy & more, a casual & relaxing island lifestyle awaits at Kuapa Isle #472! **Sale Conditions:** None **Schools:** , , * [Request Showing](#), [Photos](#), [History](#), [Maps](#), [Deed](#), [Watch List](#), [Tax Info](#)





Address	Price	Bd & Bth	Living / Avg.	Land Avg.	Lanai	Occ.	FL	DOM
301 Opihikao Place 472	\$1,300,000	3 & 2/0	1,164 \$1,117	1,114,352 \$1	400	73%	1	7

Address	Tax Maint. Ass.	Assessed Land	Assessed Building	Assessed Total	Ratio	Year & Remodeled
301 Opihikao Place 472	\$484 \$975 \$0	\$421,300	\$737,200	\$1,158,500	112%	1970 & 2024

[301 Opihikao Place 472](#) - MLS#: [202412561](#) - Kuapa Isle is one of Honolulu's premier marina-front townhome communities. Enjoy life on the ocean with this rarely available, marina-front 3-bedroom, 2-bath residence that includes a deeded boat dock for your water activities. Inside you'll find a well-maintained home that shows beautifully, with an open-concept main living area, large covered lanai overlooking the marina, and recent upgrades including new flooring and fresh paint throughout. A thoughtful floor plan places the 3 bedrooms opposite of the primary living areas for added privacy. The primary bedroom suite includes its own private sun lanai and resort-style bathroom, adding an additional touch of luxury. This well-managed community offers a large swimming pool, basketball courts, dog parks, a boat launch and boat parking, club house, and more. Minutes from Hawaii Kai Town Center, easy access to Kalaniana'ole Hwy & more, a casual & relaxing island lifestyle awaits at Kuapa Isle #472! **Region:** Hawaii Kai **Neighborhood:** West Marina **Condition:** Above Average **Parking:** Assigned, Carport, Covered - 2, Guest, Secured Entry **Total Parking:** 2 **View:** Marina/Canal, Mountain **Frontage:** Marina **Pool:** **Zoning:** 05 - R-5 Residential District **Sale Conditions:** None **Schools:** , , * [Request Showing](#), [Photos](#), [History](#), [Maps](#), [Deed](#), [Watch List](#), [Tax Info](#)

DOM = Days on Market, Occ. = Occupancy, FL = Floor Number