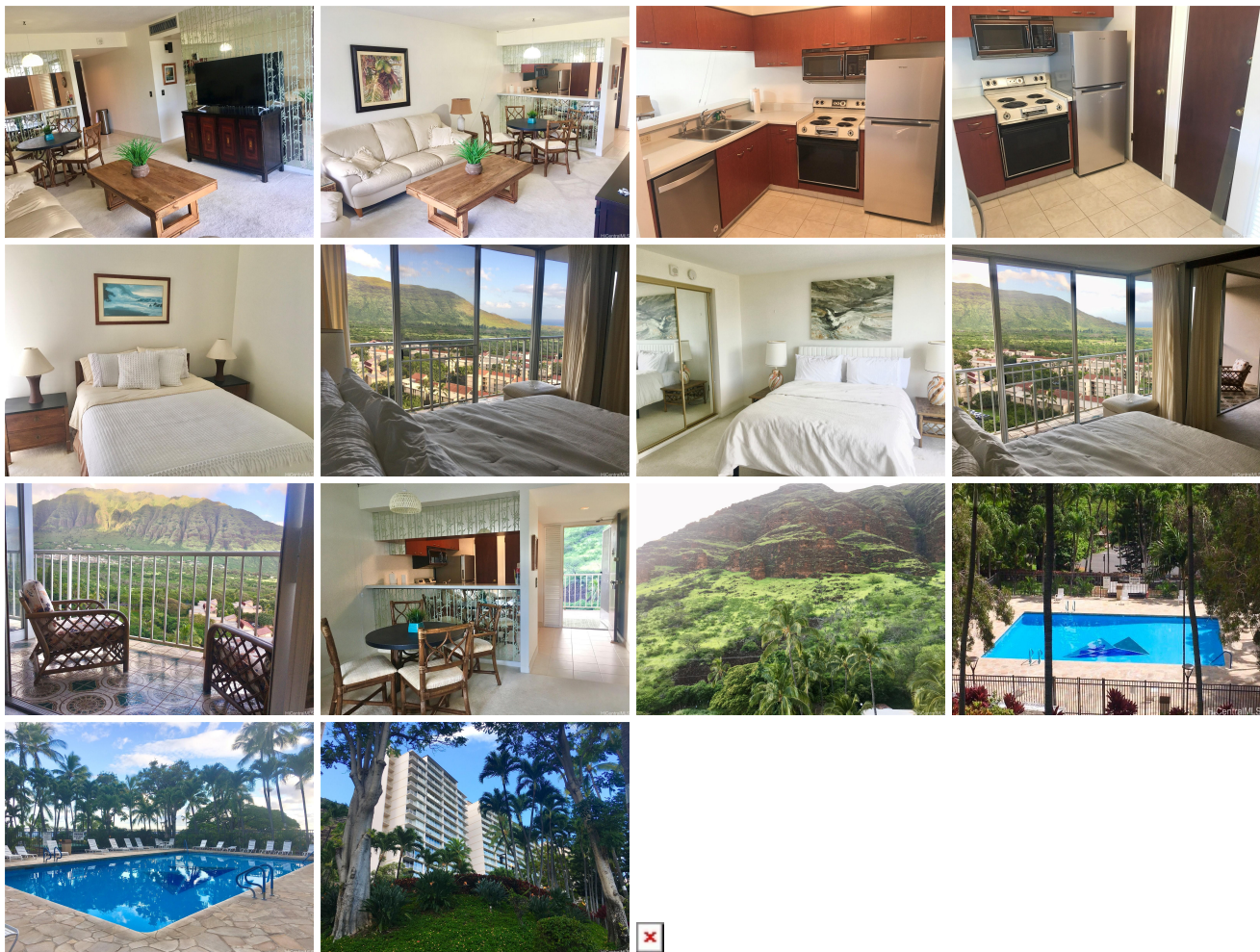


Makaha Valley Towers 84-680 Kili Drive Unit 1002, Waianae 96792 * Makaha Valley Towers

*** \$269,000**

Beds: 2 Bath: 1/0 Living Sq. Ft.: 803 Land Sq. Ft.: 612,759 Lanai Sq. Ft.: 78 Sq. Ft. Other: 0 Total Sq. Ft. 881 Maint./Assoc. \$1,290 / \$0 Parking: Guest, Open - 1, Unassigned Zoning: 12 - A-2 Medium Density Apartme	MLS#: 202412575, FS Status: Active List Date & DOM: 06-04-2024 & 23 Condition: Above Average Frontage: Tax/Year: \$87/2023 Neighborhood: Makaha Flood Zone: Zone D - Tool Frontage:	Year Built: 1970 Remodeled: Total Parking: 1 Assessed Value Building: \$246,100 Land: \$37,600 Total: \$283,700 Stories / CPR: / No View: Garden, Golf Course, Mountain, Ocean, Sunset
--	--	---

Public Remarks: Located in the 2 stack, discover a cozy, cute, and classic vintage two-bedroom/one-bath condo with spectacular mountain, ocean, and sunset views. This is the only stack at the Towers with a view of the ocean and the sunset from the back bedroom. Popcorn ceiling has been removed and textured, and is being sold fully furnished and move-in ready.
Sale Conditions: None **Schools:** [Makaha](#), [Waianae](#), [Waianae](#) * [Request Showing](#), [Photos](#), [History](#), [Maps](#), [Deed](#), [Watch List](#), [Tax Info](#)



Address	Price	Bd & Bth	Living / Avg.	Land Avg.	Lanai	Occ.	FL	DOM
84-680 Kili Drive 1002	\$269,000	2 & 1/0	803 \$335	612,759 \$0	78	45%	1002	23

Address	Tax Maint. Ass.	Assessed Land	Assessed Building	Assessed Total	Ratio	Year & Remodeled
84-680 Kili Drive 1002	\$87 \$1,290 \$0	\$37,600	\$246,100	\$283,700	95%	1970 & NA

[84-680 Kili Drive 1002](#) - MLS#: [202412575](#) - Located in the 2 stack, discover a cozy, cute, and classic vintage two-bedroom/one-bath condo with spectacular mountain, ocean, and sunset views. This is the only stack at the Towers with a view of the ocean and the sunset from the back bedroom. Popcorn ceiling has been removed and textured, and is being sold fully furnished and move-in ready. **Region:** Leeward **Neighborhood:** Makaha **Condition:** Above Average **Parking:** Guest, Open - 1, Unassigned **Total Parking:** 1 **View:** Garden, Golf Course, Mountain, Ocean, Sunset **Frontage:** **Pool:** **Zoning:** 12 - A-2 Medium Density Apartme **Sale Conditions:** None **Schools:** [Makaha](#), [Waianae](#), [Waianae](#) * [Request Showing](#), [Photos](#), [History](#), [Maps](#), [Deed](#), [Watch List](#), [Tax Info](#)

DOM = Days on Market, Occ. = Occupancy, FL = Floor Number