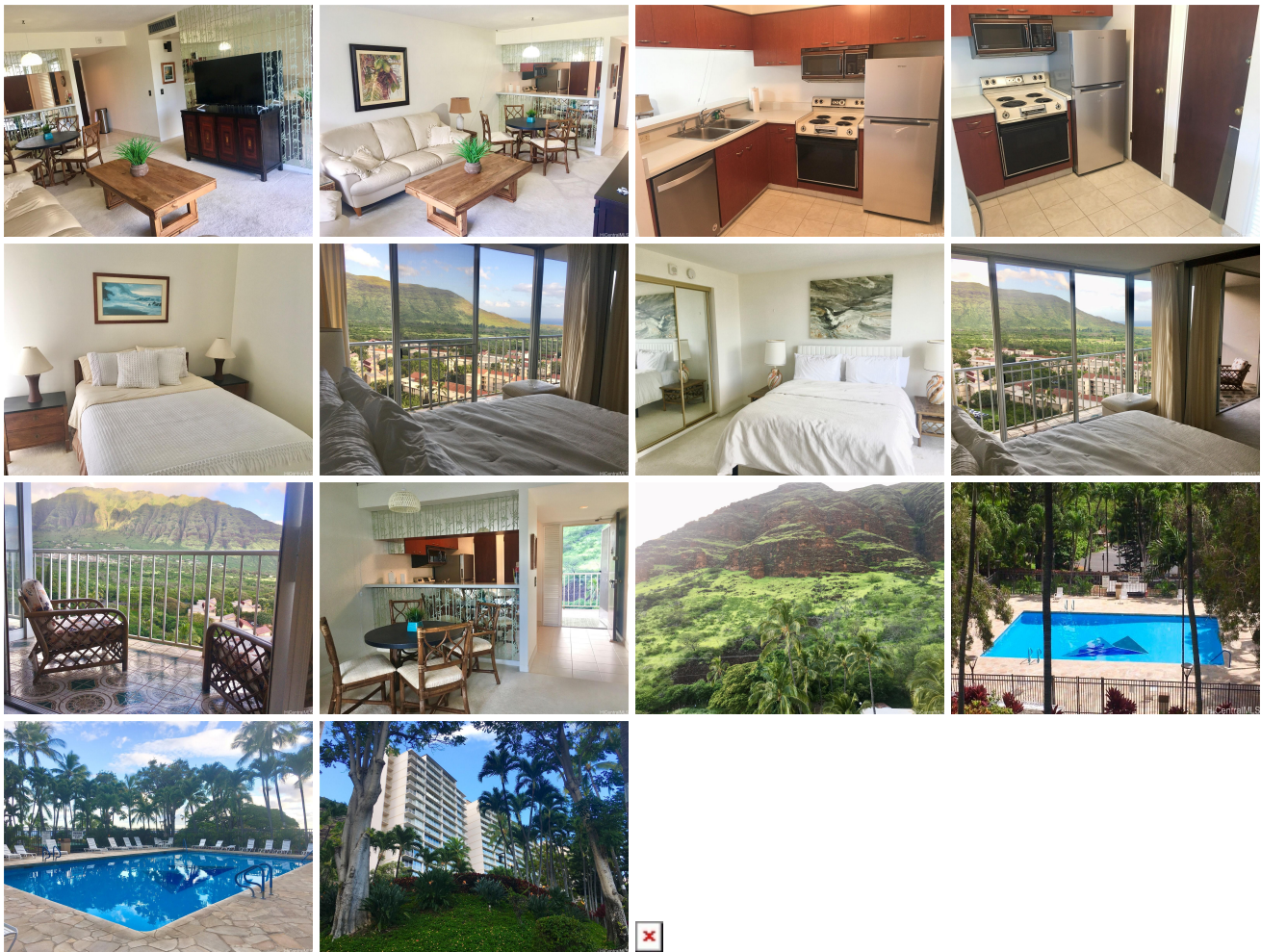


**Makaha Valley Towers 84-680 Kili Drive Unit 1002, Waianae 96792 \* \$269,000**

Beds: <b>2</b>	MLS#: <b>202412575, FS</b>	Year Built: <b>1970</b>
Bath: <b>1/0</b>	Status: <b>Active</b>	Remodeled:
Living Sq. Ft.: <b>803</b>	List Date & DOM: <b>06-04-2024 &amp; 43</b>	Total Parking: <b>1</b>
Land Sq. Ft.: <b>612,759</b>	Condition: <b>Above Average</b>	<a href="#">Assessed Value</a>
Lanai Sq. Ft.: <b>78</b>	Frontage:	Building: <b>\$246,100</b>
Sq. Ft. Other: <b>0</b>	Tax/Year: <b>\$87/2023</b>	Land: <b>\$37,600</b>
Total Sq. Ft. <b>881</b>	Neighborhood: <b>Makaha</b>	Total: <b>\$283,700</b>
Maint./Assoc. <b>\$1,290 / \$0</b>	<a href="#">Flood Zone</a> : <b>Zone D - Tool</b>	Stories / CPR: / <b>No</b>
Parking: <b>Guest, Open - 1, Unassigned</b>	Frontage:	
<a href="#">Zoning</a> : <b>12 - A-2 Medium Density Apartme</b>	View: <b>Garden, Golf Course, Mountain, Ocean, Sunset</b>	

**Public Remarks:** Located in the 2 stack, discover a cozy, cute, and classic vintage two-bedroom/one-bath condo with spectacular mountain, ocean, and sunset views. This is the only stack at the Towers with a view of the ocean and the sunset from the back bedroom. Popcorn ceiling has been removed and textured, and is being sold fully furnished and move-in ready.  
**Sale Conditions:** None **Schools:** [Makaha](#), [Waianae](#), [Waianae](#) \* [Request Showing](#), [Photos](#), [History](#), [Maps](#), [Deed](#), [Watch List](#), [Tax Info](#)



Address	Price	Bd & Bth	Living / Avg.	Land   Avg.	DOM
<a href="#">84-680 Kili Drive 1002</a>	<a href="#">\$269,000</a>	2 & 1/0	803   \$335	612,759   \$0	43

Address	Tax   Maint.   Ass.	Assessed Land	Assessed Building	Assessed Total	Ratio	Year & Remodeled
<a href="#">84-680 Kili Drive 1002</a>	\$87   \$1,290   \$0	\$37,600	\$246,100	\$283,700	95%	1970 & NA

[84-680 Kili Drive 1002](#) - MLS#: [202412575](#) - Located in the 2 stack, discover a cozy, cute, and classic vintage two-bedroom/one-bath condo with spectacular mountain, ocean, and sunset views. This is the only stack at the Towers with a view of the ocean and the sunset from the back bedroom. Popcorn ceiling has been removed and textured, and is being sold fully furnished and move-in ready. **Region:** Leeward **Neighborhood:** Makaha **Condition:** Above Average **Parking:** Guest, Open - 1, Unassigned **Total Parking:** 1 **View:** Garden, Golf Course, Mountain, Ocean, Sunset **Frontage:** **Pool:** **Zoning:** 12 - A-2 Medium Density Apartme **Sale Conditions:** None **Schools:** [Makaha](#), [Waianae](#), [Waianae](#) \* [Request Showing](#), [Photos](#), [History](#), [Maps](#), [Deed](#), [Watch List](#), [Tax Info](#)

DOM = Days on Market