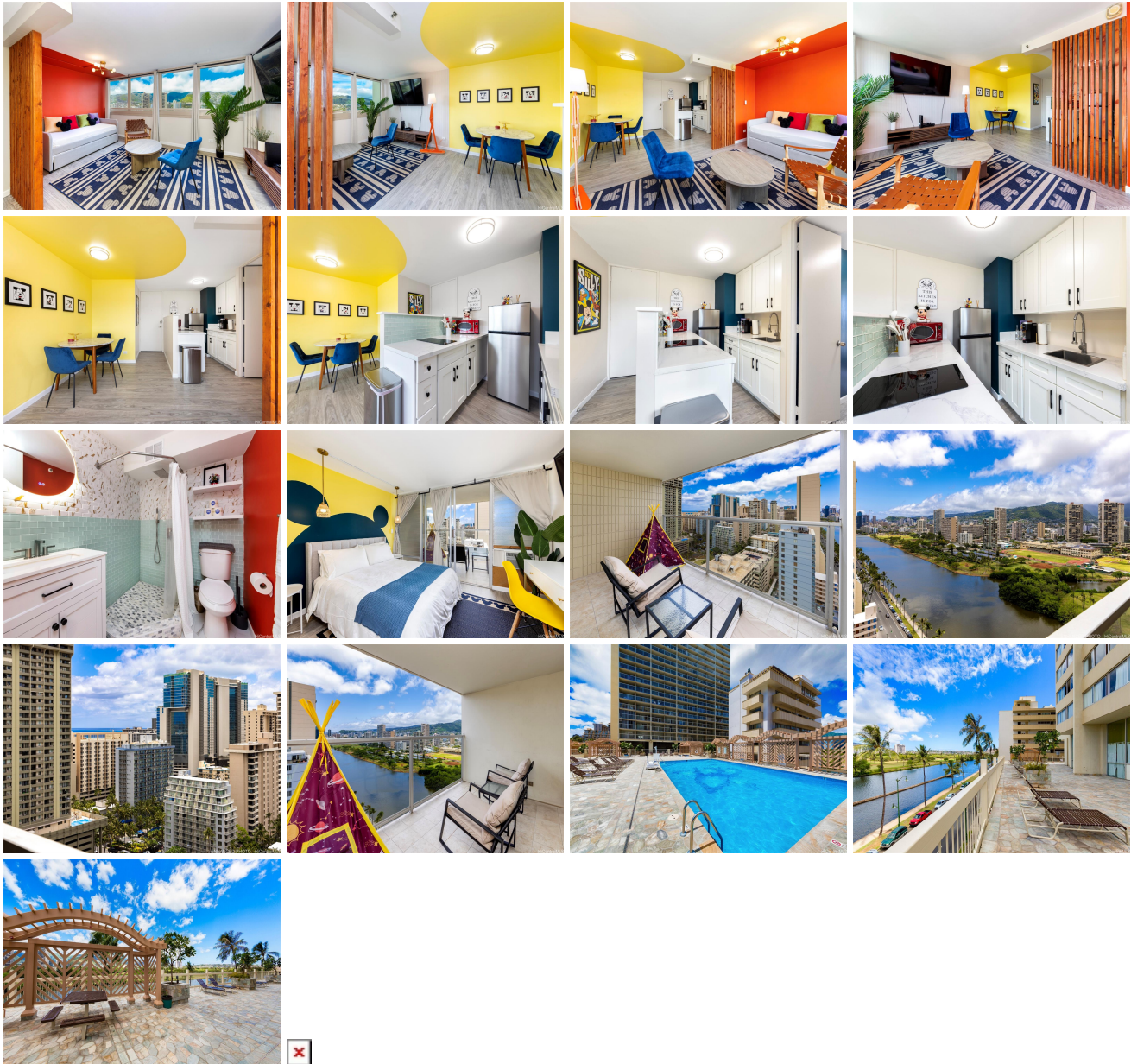


**Island Colony 445 Seaside Avenue Unit 2402, Honolulu 96815 \* \$548,000**

Beds: <b>1</b>	MLS#: <b>202412584, FS</b>	Year Built: <b>1979</b>
Bath: <b>1/0</b>	Status: <b>Active Under Contract</b>	Remodeled:
Living Sq. Ft.: <b>563</b>	List Date & DOM: <b>06-04-2024 &amp; 11</b>	Total Parking: <b>0</b>
Land Sq. Ft.: <b>49,833</b>	Condition: <b>Excellent</b>	<a href="#">Assessed Value</a>
Lanai Sq. Ft.: <b>106</b>	Frontage: <b>Other</b>	Building: <b>\$396,600</b>
Sq. Ft. Other: <b>0</b>	Tax/Year: <b>\$119/2024</b>	Land: <b>\$90,000</b>
Total Sq. Ft. <b>669</b>	Neighborhood: <b>Waikiki</b>	Total: <b>\$486,600</b>
Maint./Assoc. <b>\$798 / \$0</b>	<a href="#">Flood Zone</a> : <b>Zone AE - Tool</b>	Stories / CPR: <b>21+ / No</b>
Parking: <b>None</b>	Frontage: <b>Other</b>	
<a href="#">Zoning</a> : <b>X2 - Apartment Precinct</b>	View: <b>City, Golf Course, Marina/Canal, Mountain, Sunset</b>	

**Public Remarks:** Don't miss out on this beautifully updated residence Island Colony #2402. Sold furnished with its charming themed appearance, this higher-floor 1-bedroom, 1-bath condo is a must-see. Comprehensive upgrades include new flooring throughout, upgraded kitchen cabinetry, counter tops, fixtures, and appliances, smoothed ceilings, renovated bathroom, stylistic accents, and more. Tranquil mountains captivate from the primary living area, with Ala Wai Canal and partial Pacific Ocean views from the private lanai located off the bedroom space. This ultra-convenient location puts you blocks from all-things Waikiki including sandy beaches, nearby shops, casual and fine dining, entertainment and more, with easy access to Ala Moana, Kaka'ako, Kahala, Diamond Head, and beyond. Short-term vacation rentals are possible by registering with Island Colony Management. Listing includes enhanced, zoomed-in photos. **Sale Conditions:** None **Schools:** [Jefferson](#), [Washington](#), [Kaimuki](#) \* [Request Showing](#), [Photos](#), [History](#), [Maps](#), [Deed](#), [Watch List](#), [Tax Info](#)



Address	Price	Bd & Bth	Living / Avg.	Land   Avg.	DOM
<a href="#">445 Seaside Avenue 2402</a>	<a href="#">\$548,000</a>	1 & 1/0	563   \$973	49,833   \$11	11

Address	Tax   Maint.   Ass.	Assessed Land	Assessed Building	Assessed Total	Ratio	Year & Remodeled
<a href="#">445 Seaside Avenue 2402</a>	\$119   \$798   \$0	\$90,000	\$396,600	\$486,600	113%	1979 & NA

[445 Seaside Avenue 2402](#) - MLS#: [202412584](#) - Don't miss out on this beautifully updated residence Island Colony #2402. Sold furnished with its charming themed appearance, this higher-floor 1-bedroom, 1-bath condo is a must-see. Comprehensive upgrades include new flooring throughout, upgraded kitchen cabinetry, counter tops, fixtures, and appliances, smoothed ceilings, renovated bathroom, stylistic accents, and more. Tranquil mountains captivate from the primary living area, with Ala Wai Canal and partial Pacific Ocean views from the private lanai located off the bedroom space. This ultra-convenient location puts you blocks from all-things Waikiki including sandy beaches, neary shops, casual and fine dining, entertainment and more, with easy access to Ala Moana, Kaka'ako, Kahala, Diamond Head, and beyond. Short-term vacation rentals are possible by registering with Island Colony Management. Listing includes enhanced, zoomed-in photos.

**Region:** Metro **Neighborhood:** Waikiki **Condition:** Excellent **Parking:** None **Total Parking:** 0 **View:** City, Golf Course, Marina/Canal, Mountain, Sunset **Frontage:** Other **Pool:** **Zoning:** X2 - Apartment Precinct **Sale Conditions:** None **Schools:** [Jefferson](#), [Washington](#), [Kaimuki](#) \* [Request Showing](#), [Photos](#), [History](#), [Maps](#), [Deed](#), [Watch List](#), [Tax Info](#)

DOM = Days on Market