

The Watermark 1551 Ala Wai Boulevard Unit 2101, Honolulu 96815 * The Watermark *

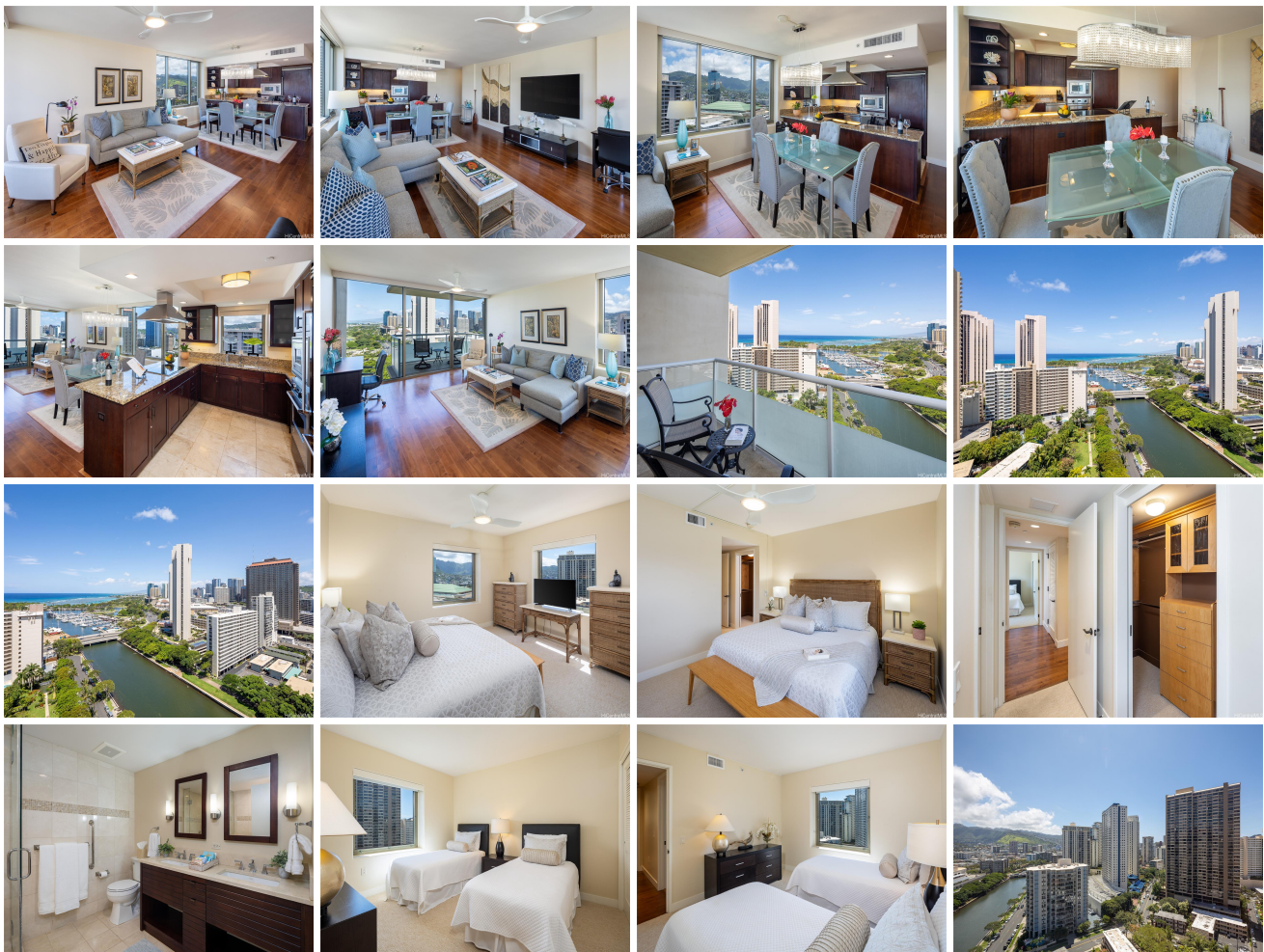
\$1,525,000

Beds: 2	MLS#: 202412600, FS	Year Built: 2008
Bath: 2/0	Status: Active	Remodeled:
Living Sq. Ft.: 1,196	List Date & DOM: 06-05-2024 & 22	Total Parking: 2
Land Sq. Ft.: 0	Condition: Above Average	Assessed Value
Lanai Sq. Ft.: 68	Frontage: Ocean, Stream/Canal	Building: \$1,333,600
Sq. Ft. Other: 0	Tax/Year: \$875/2023	Land: \$236,800
Total Sq. Ft. 1,264	Neighborhood: Waikiki	Total: \$1,570,400
Maint./Assoc. \$1,746 / \$0	Flood Zone : Zone AE - Tool	Stories / CPR: 21+ / No
Parking: Assigned, Covered - 2, Garage, Guest, Secured Entry, Street	Frontage: Ocean, Stream/Canal	

[Zoning](#): **X2 - Apartment Precinct**

View: **City, Coastline, Garden, Marina/Canal, Mountain, Ocean, Sunset**

Public Remarks: Experience the epitome of luxury island living at Watermark Unit 2101. The "01" units are the largest 2-bed units within the project and are situated on the west-facing corner offering stunning ocean, sunset, and mountain views along with extra windows in the kitchen, dining, and primary bedroom. This contemporary two-bedroom two-bath unit offers approx.1196 sq. ft. of interior living area and a lanai of approx. 68 sq ft. Gourmet kitchen with granite countertops and Viking appliances An entry hallway offers a sense of arrival and separation of the living areas and bedroom wing maximizing privacy. The primary bedroom features a walk-in closet and spa-like bath and dual vanities. The 2nd bed/bath is nicely separated from the primary suite. Central Air, washer dryer, and two parking. This home effortlessly combines luxury and practicality. The building's amenities are nothing short of extraordinary. Sitting on approx 4 acres this property includes beautifully landscaped gardens, a gym, a meeting room, a sauna, a lagoon-style infinity pool/spa walking paths, water features, BBQ areas, a concierge desk, and 24-hour security. Close proximity to shopping, restaurants, and beaches. **Sale Conditions:** None **Schools:** [Jefferson](#), [Washington](#), [Kaimuki](#) * [Request Showing](#), [Photos](#), [History](#), [Maps](#), [Deed](#), [Watch List](#), [Tax Info](#)





Address	Price	Bd & Bth	Living / Avg.	Land Avg.	Lanai	Occ.	FL	DOM
1551 Ala Wai Boulevard 2101	\$1,525,000	2 & 2/0	1,196 \$1,275	0 \$inf	68	66%	21	22

Address	Tax Maint. Ass.	Assessed Land	Assessed Building	Assessed Total	Ratio	Year & Remodeled
1551 Ala Wai Boulevard 2101	\$875 \$1,746 \$0	\$236,800	\$1,333,600	\$1,570,400	97%	2008 & NA

[1551 Ala Wai Boulevard 2101](#) - MLS#: [202412600](#) - Experience the epitome of luxury island living at Watermark Unit 2101. The "01" units are the largest 2-bed units within the project and are situated on the west-facing corner offering stunning ocean, sunset, and mountain views along with extra windows in the kitchen, dining, and primary bedroom. This contemporary two-bedroom two-bath unit offers approx. 1196 sq. ft. of interior living area and a lanai of approx. 68 sq. ft. Gourmet kitchen with granite countertops and Viking appliances. An entry hallway offers a sense of arrival and separation of the living areas and bedroom wing maximizing privacy. The primary bedroom features a walk-in closet and spa-like bath and dual vanities. The 2nd bed/bath is nicely separated from the primary suite. Central Air, washer dryer, and two parking. This home effortlessly combines luxury and practicality. The building's amenities are nothing short of extraordinary. Sitting on approx 4 acres this property includes beautifully landscaped gardens, a gym, a meeting room, a sauna, a lagoon-style infinity pool/spa walking paths, water features, BBQ areas, a concierge desk, and 24-hour security. Close proximity to shopping, restaurants, and beaches. **Region:** Metro **Neighborhood:** Waikiki **Condition:** Above Average **Parking:** Assigned, Covered - 2, Garage, Guest, Secured Entry, Street **Total Parking:** 2 **View:** City, Coastline, Garden, Marina/Canal, Mountain, Ocean, Sunset **Frontage:** Ocean, Stream/Canal **Pool:** **Zoning:** X2 - Apartment Precinct **Sale Conditions:** None **Schools:** [Jefferson](#), [Washington](#), [Kaimuki](#) * [Request Showing](#), [Photos](#), [History](#), [Maps](#), [Deed](#), [Watch List](#), [Tax Info](#)

DOM = Days on Market, Occ. = Occupancy, FL = Floor Number