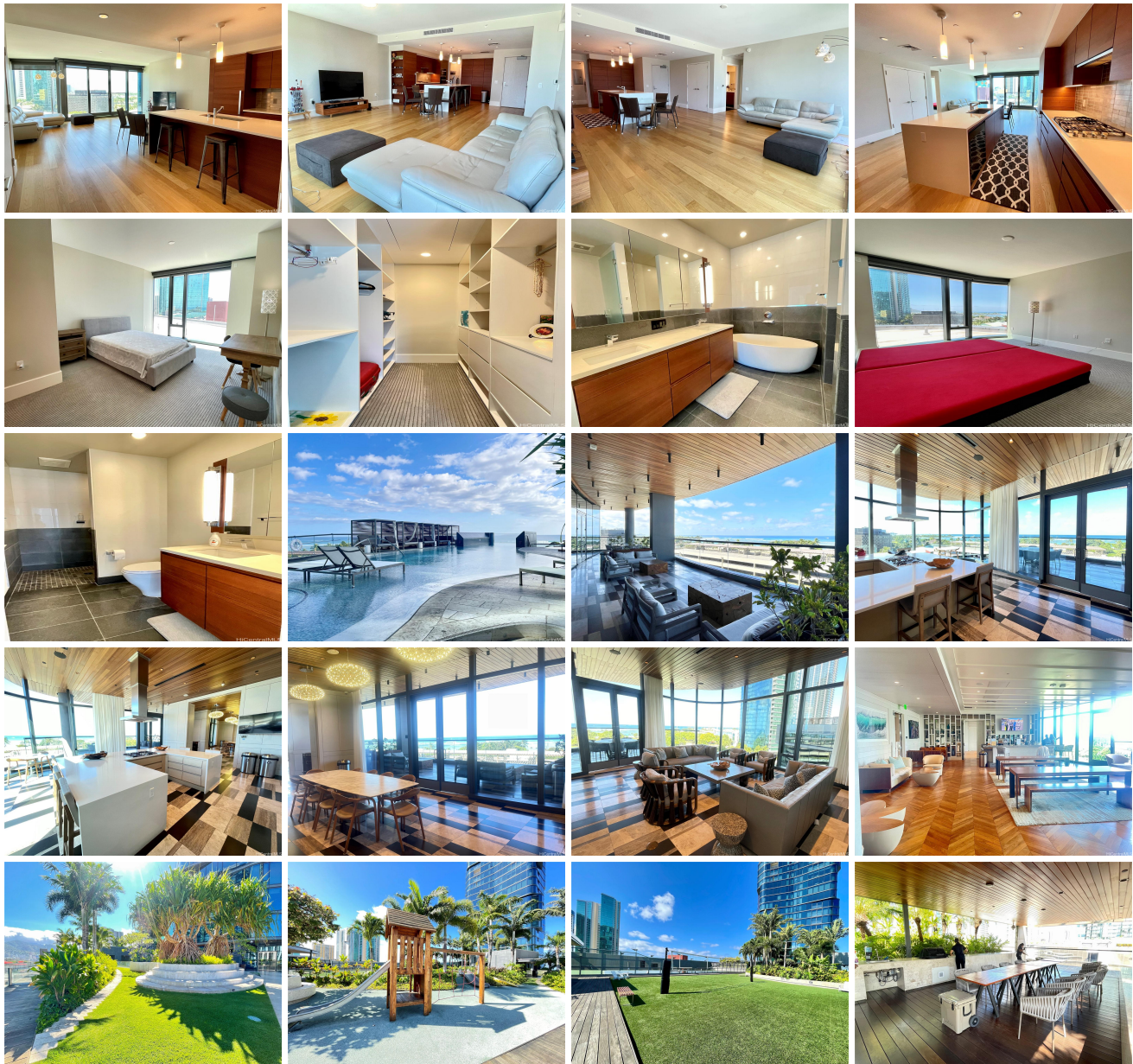


Anaha - 1108 Auahi 1108 Auahi Street Unit 806, Honolulu 96814 * Anaha - 1108 Auahi *

\$1,760,000 * Originally \$1,800,000

Beds: 2	MLS#: 202412603, FS	Year Built: 2017
Bath: 2/0	Status: Active	Remodeled:
Living Sq. Ft.: 1,270	List Date & DOM: 06-12-2024 & 33	Total Parking: 2
Land Sq. Ft.: 0	Condition: Excellent	Assessed Value
Lanai Sq. Ft.: 0	Frontage:	Building: \$1,594,200
Sq. Ft. Other: 0	Tax/Year: \$885/2023	Land: \$62,800
Total Sq. Ft. 1,270	Neighborhood: Kakaako	Total: \$1,657,000
Maint./Assoc. \$2,026 / \$0	Flood Zone : Zone AE - Tool	Stories / CPR: 21+ / No
Parking: Assigned, Covered - 2, Guest, Secured Entry	Frontage:	
Zoning : Kak - Kakaako Community Development Project	View: City, Ocean	

Public Remarks: A MUST SEE!! Being in the heart of Kaka’ako, Anaha is among one of the most luxurious condominiums in Honolulu. The unit has top-of-the-line appliances, hardwood flooring, floor-to-ceiling windows, ample living space, a bedroom with a walk-in closet, and a spectacular ocean view. Anaha offers world-class amenities including a heated infinity pool with a glass bottom, jacuzzi, sauna, gym, volleyball and tennis courts, golf simulator, and a library. They also offer huge party rooms and lounges, BBQ cabanas, movie theaters, guest suites, and full concierge services which are great for hosting. Anaha is located just minutes away from Whole Foods, Ward Theaters, local restaurants, Ala Moana Shopping Center, and Ala Moana Beach Park. **Sale Conditions:** None **Schools:** , , * [Request Showing, Photos, History, Maps, Deed, Watch List, Tax Info](#)





Address	Price	Bd & Bth	Living / Avg.	Land Avg.	Lanai	Occ.	FL	DOM
1108 Auahi Street 806	\$1,760,000	2 & 2/0	1,270 \$1,386	0 \$inf	0	72%	8	33

Address	Tax Maint. Ass.	Assessed Land	Assessed Building	Assessed Total	Ratio	Year & Remodeled
1108 Auahi Street 806	\$885 \$2,026 \$0	\$62,800	\$1,594,200	\$1,657,000	106%	2017 & NA

[1108 Auahi Street 806](#) - MLS#: [202412603](#) - Original price was \$1,800,000 - A MUST SEE!! Being in the heart of Kaka'ako, Anaha is among one of the most luxurious condominiums in Honolulu. The unit has top-of-the-line appliances, hardwood flooring, floor-to-ceiling windows, ample living space, a bedroom with a walk-in closet, and a spectacular ocean view. Anaha offers world-class amenities including a heated infinity pool with a glass bottom, jacuzzi, sauna, gym, volleyball and tennis courts, golf simulator, and a library. They also offer huge party rooms and lounges, BBQ cabanas, movie theaters, guest suites, and full concierge services which are great for hosting. Anaha is located just minutes away from Whole Foods, Ward Theaters, local restaurants, Ala Moana Shopping Center, and Ala Moana Beach Park. **Region:** Metro **Neighborhood:** Kakaako **Condition:** Excellent **Parking:** Assigned, Covered - 2, Guest, Secured Entry **Total Parking:** 2 **View:** City, Ocean **Frontage:** Pool **Zoning:** Kak - Kakaako Community Development Project **Sale Conditions:** None **Schools:** , , * [Request Showing, Photos, History, Maps, Deed, Watch List, Tax Info](#)

DOM = Days on Market, Occ. = Occupancy, FL = Floor Number