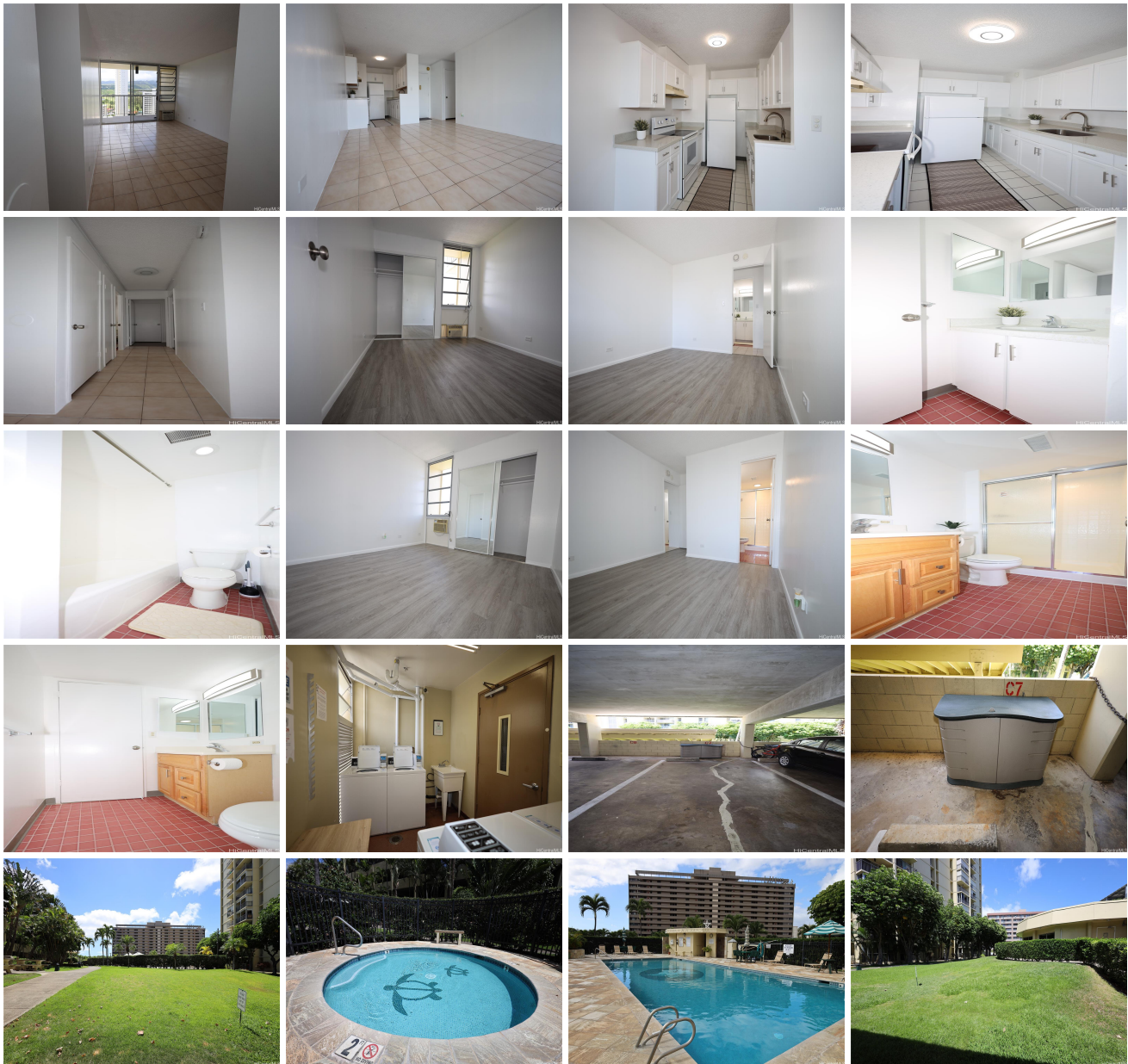


Century West 3161 Ala Ilima Street Unit 1713, Honolulu 96818 * Century West * \$450,000

Bed: 2	MLS#: 202412626, FS	Year Built: 1973
Bath: 2/0	Status: Active	Remodeled:
Living Sq. Ft.: 789	List Date & DOM: 06-05-2024 & 25	Total Parking: 1
Land Sq. Ft.: 170,799	Condition: Above Average	Assessed Value
Lanai Sq. Ft.: 0	Frontage:	Building: \$425,700
Sq. Ft. Other: 0	Tax/Year: \$137/2023	Land: \$45,200
Total Sq. Ft. 789	Neighborhood: Salt Lake	Total: \$470,900
Maint./Assoc. \$706 / \$0	Flood Zone : Zone X - Tool	Stories / CPR: 21+ / No
Parking: Covered - 1	Frontage:	
Zoning : 13 - A-3 High Density Apartment	View: Mountain	

Public Remarks: Move-in ready, well maintained, corner unit in Century West, with many amenities including pool, playground, dog park. The kitchen has been updated, with new countertop, sink and faucet. Both bedrooms have new luxury vinyl flooring. 3 window AC units are installed. Building safety features included key fob restricted entry, 24-hour security, garage remote and perimeter fencing. A storage bin is attached to a covered garage parking space. The unit is mountain facing with a nice view and benefits from cool winds. Location is convenient, in between Pearl City and Honolulu city center. This home is a must-see, close to airport, hospitals (civilian and military) and several government properties. **Sale Conditions:** None **Schools:** [Aliamanu](#), [Aliamanu](#), [Moanalua](#) * [Request Showing](#), [Photos](#), [History](#), [Maps](#), [Deed](#), [Watch List](#), [Tax Info](#)





Address	Price	Bd & Bth	Living / Avg.	Land Avg.	Lanai	Occ.	FL	DOM
3161 Ala Ilima Street 1713	\$450,000	2 & 2/0	789 \$570	170,799 \$3	0	52%	17	25

Address	Tax Maint. Ass.	Assessed Land	Assessed Building	Assessed Total	Ratio	Year & Remodeled
3161 Ala Ilima Street 1713	\$137 \$706 \$0	\$45,200	\$425,700	\$470,900	96%	1973 & NA

[3161 Ala Ilima Street 1713](#) - MLS#: [202412626](#) - Move-in ready, well maintained, corner unit in Century West, with many amenities including pool, playground, dog park. The kitchen has been updated, with new countertop, sink and faucet. Both bedrooms have new luxury vinyl flooring. 3 window AC units are installed. Building safety features included key fob restricted entry, 24-hour security, garage remote and perimeter fencing. A storage bin is attached to a covered garage parking space. The unit is mountain facing with a nice view and benefits from cool winds. Location is convenient, in between Pearl City and Honolulu city center. This home is a must-see, close to airport, hospitals (civilian and military) and several government properties. **Region:** Metro **Neighborhood:** Salt Lake **Condition:** Above Average **Parking:** Covered - 1 **Total Parking:** 1 **View:** Mountain **Frontage:** Pool: **Zoning:** 13 - A-3 High Density Apartment **Sale Conditions:** None **Schools:** [Aliamanu](#), [Aliamanu](#), [Moanalua](#) * [Request Showing](#), [Photos](#), [History](#), [Maps](#), [Deed](#), [Watch List](#), [Tax Info](#)

DOM = Days on Market, Occ. = Occupancy, FL = Floor Number