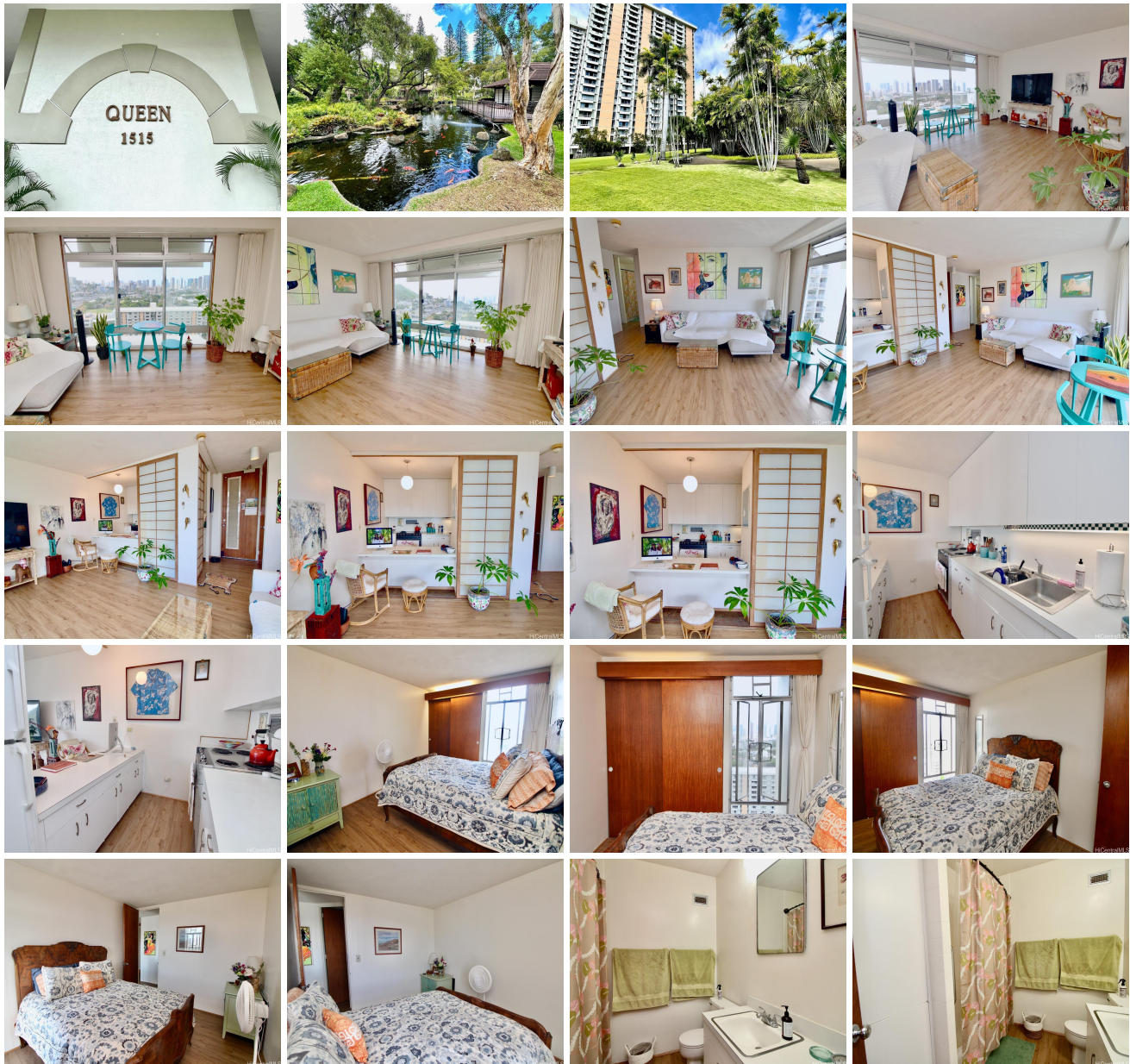
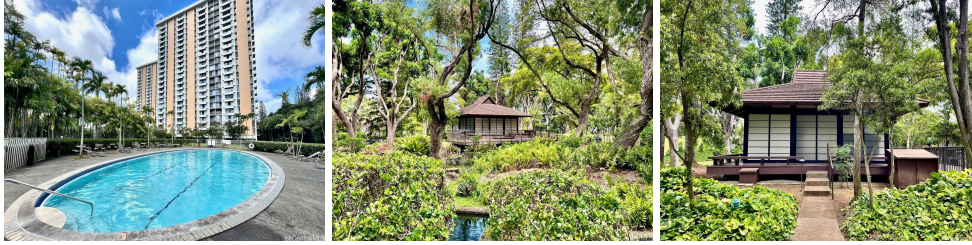


Queen Emma Gardens 1515 Nuuanu Avenue Unit 2155, Honolulu 96817 * \$335,000

Beds: 1	MLS#: 202412627, FS	Year Built: 1963
Bath: 1/0	Status: Active	Remodeled:
Living Sq. Ft.: 574	List Date & DOM: 06-07-2024 & 40	Total Parking: 1
Land Sq. Ft.: 0	Condition: Above Average	Assessed Value
Lanai Sq. Ft.: 0	Frontage:	Building: \$237,200
Sq. Ft. Other: 0	Tax/Year: \$97/2023	Land: \$94,900
Total Sq. Ft. 574	Neighborhood: Downtown	Total: \$332,100
Maint./Assoc. \$916 / \$0	Flood Zone : Zone X - Tool	Stories / CPR: One / No
Parking: Assigned, Covered - 1, Guest	Frontage:	
Zoning : 12 - A-2 Medium Density Apartme	View: City, Diamond Head	

Public Remarks: Desirable Queen Tower, breathtaking DH and partial ocean view. Spacious 1/1 with 1 covered parking. Pet friendly (verify). Enjoy secured 8-acres well maintained garden with 8 BBQ areas, jogging/walking path, Dog walking with dog waste bins, 2 pools including kiddie pool, 2 of Tea Houses are available for social occasions, with bathrooms, full kitchen, tables and chairs. Nice Koi Pond, birds gathering peacefully. Super convenient location, walking distance to Downtown Business District, Nice upscale restaurants and enjoy First Friday art district, Chinatown for shopping. Safeway/Longs Drugs are just across, Starbucks, Poke store, Local restaurants are also across. Queens Medical Center, Kuakini Hospital are only couple blocks away. Close to H-1 Freeway entrance both East and West bound. You will enjoy the sophisticated property. Don't miss this Gem-like life. **Sale Conditions:** None **Schools:** [Royal](#), [Keelikolani](#), [Mckinley](#) * [Request Showing](#), [Photos](#), [History](#), [Maps](#), [Deed](#), [Watch List](#), [Tax Info](#)





Address	Price	Bd & Bth	Living / Avg.	Land Avg.	DOM
1515 Nuuanu Avenue 2155	\$335,000	1 & 1/0	574 \$584	0 \$inf	40

Address	Tax Maint. Ass.	Assessed Land	Assessed Building	Assessed Total	Ratio	Year & Remodeled
1515 Nuuanu Avenue 2155	\$97 \$916 \$0	\$94,900	\$237,200	\$332,100	101%	1963 & NA

[1515 Nuuanu Avenue 2155](#) - MLS#: [202412627](#) - Desirable Queen Tower, breathtaking DH and partial ocean view. Spacious 1/1 with 1 covered parking. Pet friendly (verify). Enjoy secured 8-acres well maintained garden with 8 BBQ areas, jogging/walking path, Dog walking with dog waste bins, 2 pools including kiddie pool, 2 of Tea Houses are available for social occasions, with bathrooms, full kitchen, tables and chairs. Nice Koi Pond, birds gathering peacefully. Super convenient location, walking distance to Downtown Business District, Nice upscale restaurants and enjoy First Friday art district, Chinatown for shopping. Safeway/Longs Drugs are just across, Starbucks, Poke store, Local restaurants are also across. Queens Medical Center, Kuakini Hospital are only couple blocks away. Close to H-1 Freeway entrance both East and West bound. You will enjoy the sophisticated property. Don't miss this Gem-like life. **Region:** Metro **Neighborhood:** Downtown **Condition:** Above Average **Parking:** Assigned, Covered - 1, Guest **Total Parking:** 1 **View:** City, Diamond Head **Frontage:** **Pool:** **Zoning:** 12 - A-2 Medium Density Apartme **Sale Conditions:** None **Schools:** [Royal](#), [Keelikolani](#), [Mckinley](#) * [Request Showing](#), [Photos](#), [History](#), [Maps](#), [Deed](#), [Watch List](#), [Tax Info](#)

DOM = Days on Market