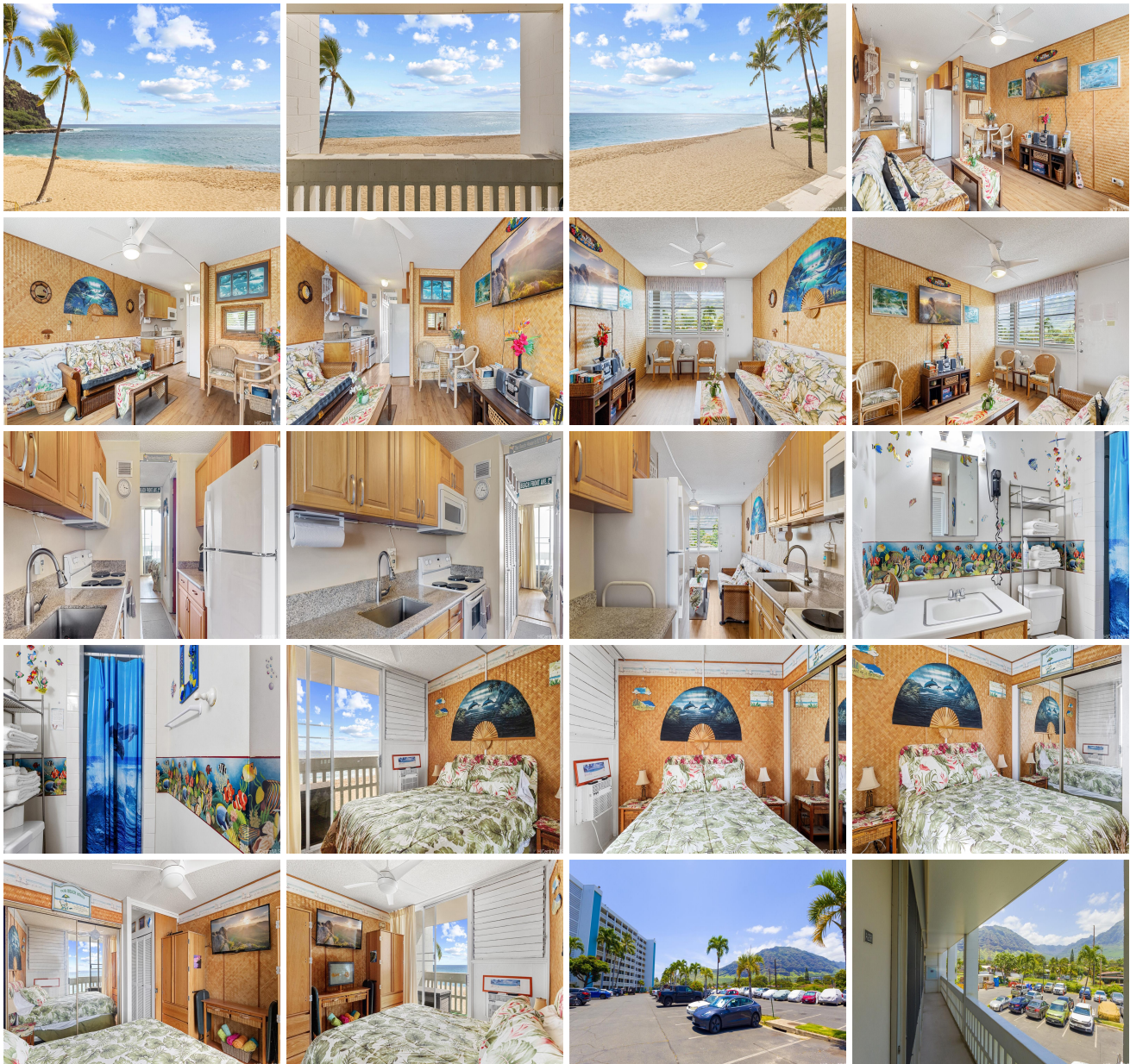
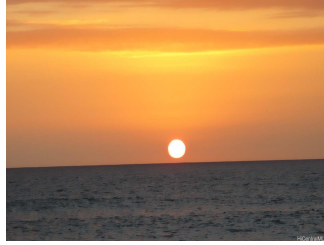


**Makaha Beach Cabanas 84-965 Farrington Highway Unit A206, Waianae 96792 \* \$319,000**

Beds: <b>1</b>	MLS#: <b>202412642, FS</b>	Year Built: <b>1967</b>
Bath: <b>1/0</b>	Status: <b>Active</b>	Remodeled:
Living Sq. Ft.: <b>456</b>	List Date & DOM: <b>06-05-2024 &amp; 21</b>	Total Parking: <b>1</b>
Land Sq. Ft.: <b>97,749</b>	Condition: <b>Above Average</b>	<a href="#">Assessed Value</a>
Lanai Sq. Ft.: <b>64</b>	Frontage: <b>Ocean, Sandy Beach, Waterfront</b>	Building: <b>\$309,300</b>
Sq. Ft. Other: <b>0</b>	Tax/Year: <b>\$103/2024</b>	Land: <b>\$7,700</b>
Total Sq. Ft. <b>520</b>	Neighborhood: <b>Makaha</b>	Total: <b>\$317,000</b>
Maint./Assoc. <b>\$993 / \$0</b>	<a href="#">Flood Zone</a> : <b>Zone AE - Tool</b>	Stories / CPR: <b>8-14 / No</b>
Parking: <b>Open - 1, Unassigned</b>	Frontage: <b>Ocean, Sandy Beach, Waterfront</b>	View: <b>Coastline, Ocean, Sunset</b>
<a href="#">Zoning</a> : <b>12 - A-2 Medium Density Apartme</b>		

**Public Remarks:** Fantastic beachfront condo with wonderful, perfect postcard ocean and sunset views. Relax on your lanai and enjoy the sounds of the Pacific Ocean waves while searching for sightings of whales, dolphins, turtles, etc. This move-in ready, fully furnished, tropical-style condo is ready for your enjoyment as a home or getaway. As a bonus, the electric panel has been upgraded and the fridge has been replaced. Furthermore, spall renovations for the unit have been completed. The special assessment has also been paid. It is a short drive from Waianae town where you can find restaurants, grocery stores,, etc. Looking for more adventure? The Waianae boat harbor is also a short drive away where you can enjoy deep sea fishing or dolphin watching from various charter boats. It's also close to the famous Makaha surfing beach and a golf course. Remember to bring your swimming suit to get your feet wet in the surf after the viewing. **Sale Conditions:** None **Schools:** [Makaha, Waianae, Waianae](#) \* [Request Showing](#), [Photos](#), [History](#), [Maps](#), [Deed](#), [Watch List](#), [Tax Info](#)





Address	Price	Bd & Bth	Living / Avg.	Land   Avg.	DOM
<a href="#">84-965 Farrington Highway A206</a>	<a href="#">\$319,000</a>	1 & 1/0	456   \$700	97,749   \$3	21

Address	Tax   Maint.   Ass.	Assessed Land	Assessed Building	Assessed Total	Ratio	Year & Remodeled
<a href="#">84-965 Farrington Highway A206</a>	\$103   \$993   \$0	\$7,700	\$309,300	\$317,000	101%	1967 & NA

[84-965 Farrington Highway A206](#) - MLS#: [202412642](#) - Fantastic beachfront condo with wonderful, perfect postcard ocean and sunset views. Relax on your lanai and enjoy the sounds of the Pacific Ocean waves while searching for sightings of whales, dolphins, turtles, etc. This move-in ready, fully furnished, tropical-style condo is ready for your enjoyment as a home or getaway. As a bonus, the electric panel has been upgraded and the fridge has been replaced. Furthermore, spall renovations for the unit have been completed. The special assessment has also been paid. It is a short drive from Waianae town where you can find restaurants, grocery stores,, etc. Looking for more adventure? The Waianae boat harbor is also a short drive away where you can enjoy deep sea fishing or dolphin watching from various charter boats. It's also close to the famous Makaha surfing beach and a golf course. Remember to bring your swimming suit to get your feet wet in the surf after the viewing. **Region:** Leeward **Neighborhood:** Makaha **Condition:** Above Average **Parking:** Open - 1, Unassigned **Total Parking:** 1 **View:** Coastline, Ocean, Sunset **Frontage:** Ocean,Sandy Beach,Waterfront **Pool:** **Zoning:** 12 - A-2 Medium Density Apartme **Sale Conditions:** None **Schools:** [Makaha](#), [Waianae](#), [Waianae](#) \* [Request Showing](#), [Photos](#), [History](#), [Maps](#), [Deed](#), [Watch List](#), [Tax Info](#)

DOM = Days on Market