

**1510 Ulupii Street, Kailua 96734 \* \$1,537,000**

Beds: 3

MLS#: **202412644**, FS

Year Built: **1961**

Bath: 2/0

Status: **Active Under Contract**

Remodeled: **2024**

Living Sq. Ft.: **1,390**

List Date & DOM: **06-06-2024 & 9**

Total Parking: **6**

Land Sq. Ft.: **7,524**

Condition: **Excellent**

[Assessed Value](#)

Lanai Sq. Ft.: **265**

Frontage: **Other**

Building: **\$12,600**

Sq. Ft. Other: **290**

Tax/Year: **\$531/2024**

Land: **\$1,164,400**

Total Sq. Ft. **1,945**

Neighborhood: **Olomana**

Total: **\$1,177,000**

Maint./Assoc. **\$0 / \$0**

[Flood Zone](#): **Zone X - Tool**

Stories / CPR: **One / No**

Parking: **3 Car+, Boat, Carport**

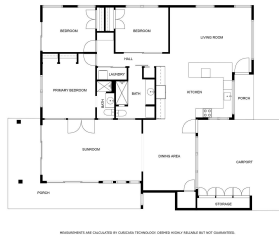
Frontage: **Other**

[Zoning](#): **04 - R-7.5 Residential District**

View: **Mountain, Sunset**

**Public Remarks:** Captivating Ko'olau and Olomana views await you in coveted Olomana! Natural light floods this beautifully updated home, accentuating its open and spacious floor plan. You will fall in love with the bright and airy sunroom that opens onto an expansive landscaped yard featuring over 265 sqft of covered lanai space, perfect for enjoying sunsets over the Ko'olau. Elevated above the other homes in the area this large lot is just waiting for a pool. The home features an oversized, updated kitchen that opens to multiple living spaces, as well as newly installed luxury vinyl plank flooring and fresh paint throughout. With wood doors sourced from Don Ho's former residence and weathered wood walls reclaimed from Punahou School, this home exudes character and beachside charm. Don't miss the outdoor shower and ample secure storage inside and out. Conveniently located down the street from the award-winning Blue Ribbon Maunawili Elementary School and playground, and a half mile from Castle Medical Center. Total Sqft includes 290sqft 2nd Living & 265 sqft covered lanai - these are not reflected in tax records. Join us for an Open House Thursday 9:00am-12pm. **Sale Conditions:** None **Schools:** [Maunawili](#), [Kailua](#), [Kailua](#) \* [Request Showing](#), [Photos](#), [History](#), [Maps](#), [Deed](#), [Watch List](#), [Tax Info](#)





Address	Price	Bd & Bth	Living / Avg.	Land   Avg.	DOM
<a href="#">1510 Ulupii Street</a>	<a href="#">\$1,537,000</a>	3 & 2/0	1,390   \$1,106	7,524   \$204	9

Address	Tax   Maint.   Ass.	Assessed Land	Assessed Building	Assessed Total	Ratio	Year & Remodeled
<a href="#">1510 Ulupii Street</a>	\$531   \$0   \$0	\$1,164,400	\$12,600	\$1,177,000	131%	1961 & 2024

[1510 Ulupii Street](#) - MLS#: [202412644](#) - Captivating Ko'olau and Olomana views await you in coveted Olomana! Natural light floods this beautifully updated home, accentuating its open and spacious floor plan. You will fall in love with the bright and airy sunroom that opens onto an expansive landscaped yard featuring over 265 sqft of covered lanai space, perfect for enjoying sunsets over the Ko'olau. Elevated above the other homes in the area this large lot is just waiting for a pool. The home features an oversized, updated kitchen that opens to multiple living spaces, as well as newly installed luxury vinyl plank flooring and fresh paint throughout. With wood doors sourced from Don Ho's former residence and weathered wood walls reclaimed from Punahou School, this home exudes character and beachside charm. Don't miss the outdoor shower and ample secure storage inside and out. Conveniently located down the street from the award-winning Blue Ribbon Maunawili Elementary School and playground, and a half mile from Castle Medical Center. Total Sqft includes 290sqft 2nd Living & 265 sqft covered lanai - these are not reflected in tax records. Join us for an Open House Thursday 9:00am-12pm. **Region:** Kailua **Neighborhood:** Olomana **Condition:** Excellent **Parking:** 3 Car+, Boat, Carport **Total Parking:** 6 **View:** Mountain, Sunset **Frontage:** Other **Pool:** None **Zoning:** 04 - R-7.5 Residential District **Sale Conditions:** None **Schools:** [Maunawili](#), [Kailua](#), [Kailua](#) \* [Request Showing](#), [Photos](#), [History](#), [Maps](#), [Deed](#), [Watch List](#), [Tax Info](#)

DOM = Days on Market