

Moanalua Village 1355 Moanalualani Place Unit 9G, Honolulu 96819 * Moanalua Village *

\$998,000

Beds: **3**
Bath: **2/1**
Living Sq. Ft.: **1,729**
Land Sq. Ft.: **432,943**
Lanai Sq. Ft.: **160**
Sq. Ft. Other: **0**
Total Sq. Ft. **1,889**
Maint./Assoc. **\$0 / \$977**

MLS#: **202412649, FS**
Status: **Active**
List Date & DOM: **06-14-2024 & 12**
Condition: **Excellent**
Frontage: **Golf Course**
Tax/Year: **\$248/2023**
Neighborhood: **Moanalua Valley**
Flood Zone: Zone D - Tool

Year Built: **1992**
Remodeled:
Total Parking: **2**
[Assessed Value](#)
Building: **\$632,300**
Land: **\$216,900**
Total: **\$849,200**
Stories / CPR: **Three / No**

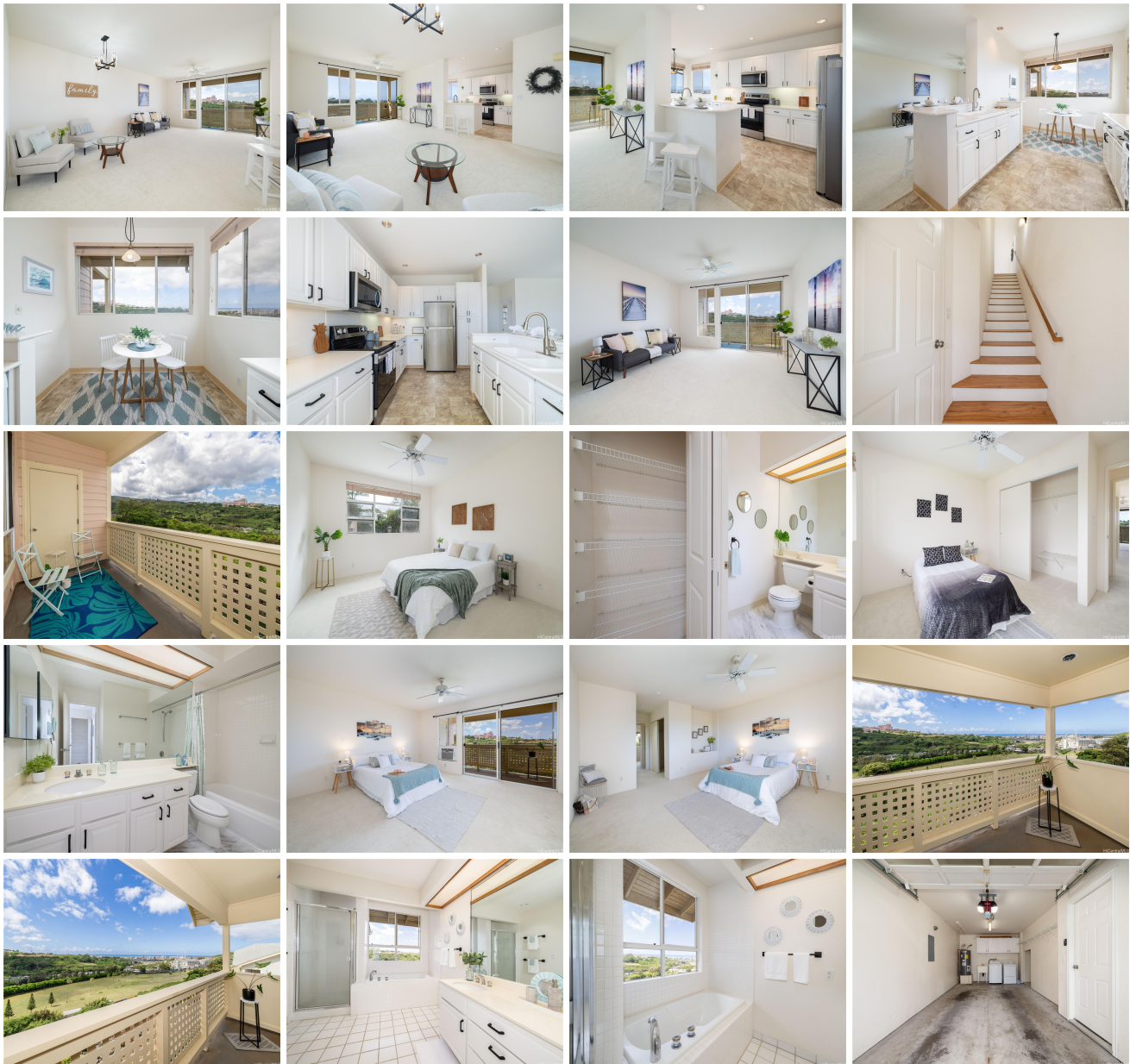
Parking: **Assigned, Covered - 1, Garage, Guest**

Frontage: **Golf Course**

Zoning: 12 - A-2 Medium Density Apartme

View: **City, Coastline, Golf Course, Mountain, Ocean**

Public Remarks: Welcome to your island paradise! This rarely available 3-bedroom, 2.5 bath townhome is located in the private, gated subdivision in Moanalua Valley. Enjoy both ocean and golf course views from your living room, kitchen, primary bedroom and lanai!. Grand primary bedroom with large en-suite bathroom and private lanai. Enjoy all of the amenities that Moanalua Village has to offer, including a pool, hot tub, barbecue area, and gym. Close proximity to Tripler, Fort Shafter, and Joint Base Pearl Harbor/Hickam. With easy access to major highways, commuting is a breeze, whether you're heading to Honolulu, the North Shore, or anywhere in-between! *Note special assessment of \$2553.62 or \$422.27/mos from July until December (6 mos) due to increase of insurance policy* 3D Virtual tour in link. **Sale Conditions:** None **Schools:** , , * [Request Showing, Photos, History, Maps, Deed, Watch List, Tax Info](#)





Address	Price	Bd & Bth	Living / Avg.	Land Avg.	Lanai	Occ.	FL	DOM
1355 Moanalualani Place 9G	\$998,000	3 & 2/1	1,729 \$577	432,943 \$2	160	75%	3	12

Address	Tax Maint. Ass.	Assessed Land	Assessed Building	Assessed Total	Ratio	Year & Remodeled
1355 Moanalualani Place 9G	\$248 \$0 \$977	\$216,900	\$632,300	\$849,200	118%	1992 & NA

[1355 Moanalualani Place 9G](#) - MLS#: [202412649](#) - Welcome to your island paradise! This rarely available 3-bedroom, 2.5 bath townhome is located in the private, gated subdivision in Moanalua Valley. Enjoy both ocean and golf course views from your living room, kitchen, primary bedroom and lanai!. Grand primary bedroom with large en-suite bathroom and private lanai. Enjoy all of the amenities that Moanalua Village has to offer, including a pool, hot tub, barbecue area, and gym. Close proximity to Tripler, Fort Shafter, and Joint Base Pearl Harbor/Hickam. With easy access to major highways, commuting is a breeze, whether you're heading to Honolulu, the North Shore, or anywhere in-between! *Note special assessment of \$2553.62 or \$422.27/mos from July until December (6 mos) due to increase of insurance policy* 3D Virtual tour in link.
Region: Metro **Neighborhood:** Moanalua Valley **Condition:** Excellent **Parking:** Assigned, Covered - 1, Garage, Guest **Total Parking:** 2 **View:** City, Coastline, Golf Course, Mountain, Ocean **Frontage:** Golf Course **Pool:** **Zoning:** 12 - A-2 Medium Density Apartme **Sale Conditions:** None **Schools:** , , * [Request Showing](#), [Photos](#), [History](#), [Maps](#), [Deed](#), [Watch List](#), [Tax Info](#)

DOM = Days on Market, Occ. = Occupancy, FL = Floor Number