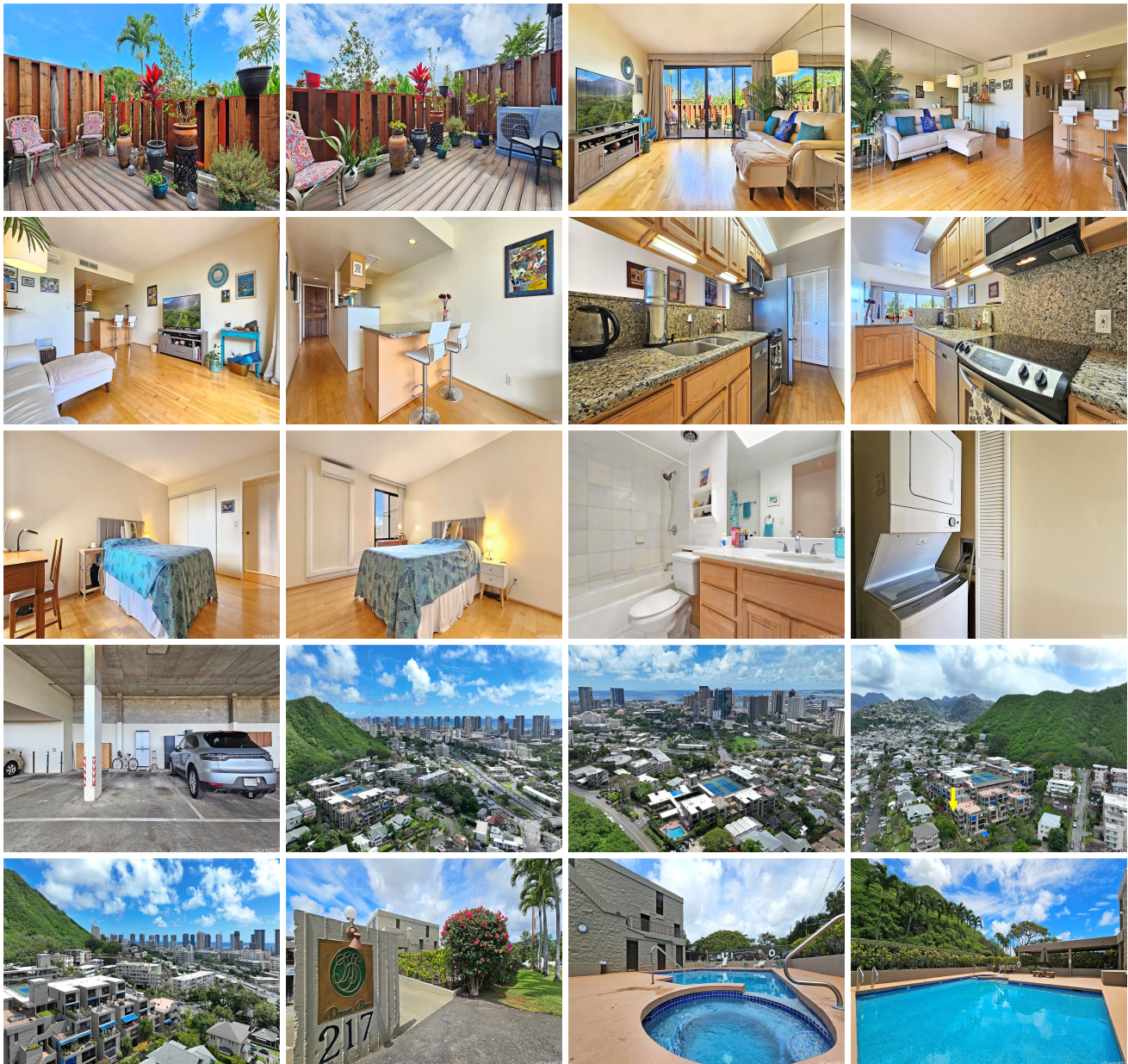


Dowsett Point 217 Prospect Street Unit D12, Honolulu 96813 * Dowsett Point * \$529,000

Beds: 1	MLS#: 202412651, FS	Year Built: 1980
Bath: 1/0	Status: Active	Remodeled:
Living Sq. Ft.: 771	List Date & DOM: 06-05-2024 & 42	Total Parking: 1
Land Sq. Ft.: 102,540	Condition: Above Average	Assessed Value
Lanai Sq. Ft.: 141	Frontage:	Building: \$367,200
Sq. Ft. Other: 0	Tax/Year: \$107/2024	Land: \$98,500
Total Sq. Ft. 912	Neighborhood: Punchbowl Area	Total: \$465,700
Maint./Assoc. \$808 / \$0	Flood Zone : Zone X - Tool	Stories / CPR: One / No
Parking: Assigned, Covered - 1, Secured Entry	Frontage:	
Zoning : 12 - A-2 Medium Density Apartme	View: City, Garden, Mountain	

Public Remarks: OPEN HOUSE on SUNDAY 7/07 2-5PM! Discover a peaceful corner 1-bedroom residence with a lanai nestled in the heart of urban Honolulu! Located on the scenic slopes of Punchbowl, this pet-friendly mid-rise condominium at Dowsett Point offers a tranquil oasis complete with a sparkling swimming pool and tennis courts. Enjoy 771 square feet of interior space complemented by 141 square feet of outdoor lanai. The unit features 2 Mitsubishi split ACs, an awning, smooth ceilings, and more! Conveniently situated near Honolulu's business district, Queen's Hospital, Vibrant Kakaako and with easy freeway access, this home perfectly balances serenity and city living. Don't miss out on this unique opportunity! **Sale Conditions:** None **Schools:** , , * [Request Showing](#), [Photos](#), [History](#), [Maps](#), [Deed](#), [Watch List](#), [Tax Info](#)





Address	Price	Bd & Bth	Living / Avg.	Land Avg.	Lanai	Occ.	FL	DOM
217 Prospect Street D12	\$529,000	1 & 1/0	771 \$686	102,540 \$5	141	64%	1	42

Address	Tax Maint. Ass.	Assessed Land	Assessed Building	Assessed Total	Ratio	Year & Remodeled
217 Prospect Street D12	\$107 \$808 \$0	\$98,500	\$367,200	\$465,700	114%	1980 & NA

[217 Prospect Street D12](#) - MLS#: [202412651](#) - OPEN HOUSE on SUNDAY 7/07 2-5PM! Discover a peaceful corner 1-bedroom residence with a lanai nestled in the heart of urban Honolulu! Located on the scenic slopes of Punchbowl, this pet-friendly mid-rise condominium at Dowsett Point offers a tranquil oasis complete with a sparkling swimming pool and tennis courts. Enjoy 771 square feet of interior space complemented by 141 square feet of outdoor lanai. The unit features 2 Mitsubishi split ACs, an awning, smooth ceilings, and more! Conveniently situated near Honolulu's business district, Queen's Hospital, Vibrant Kakaako and with easy freeway access, this home perfectly balances serenity and city living. Don't miss out on this unique opportunity! **Region:** Metro **Neighborhood:** Punchbowl Area **Condition:** Above Average **Parking:** Assigned, Covered - 1, Secured Entry **Total Parking:** 1 **View:** City, Garden, Mountain **Frontage:** **Pool:** **Zoning:** 12 - A-2 Medium Density Apartme **Sale Conditions:** None **Schools:** , , * [Request Showing](#), [Photos](#), [History](#), [Maps](#), [Deed](#), [Watch List](#), [Tax Info](#)

DOM = Days on Market, Occ. = Occupancy, FL = Floor Number