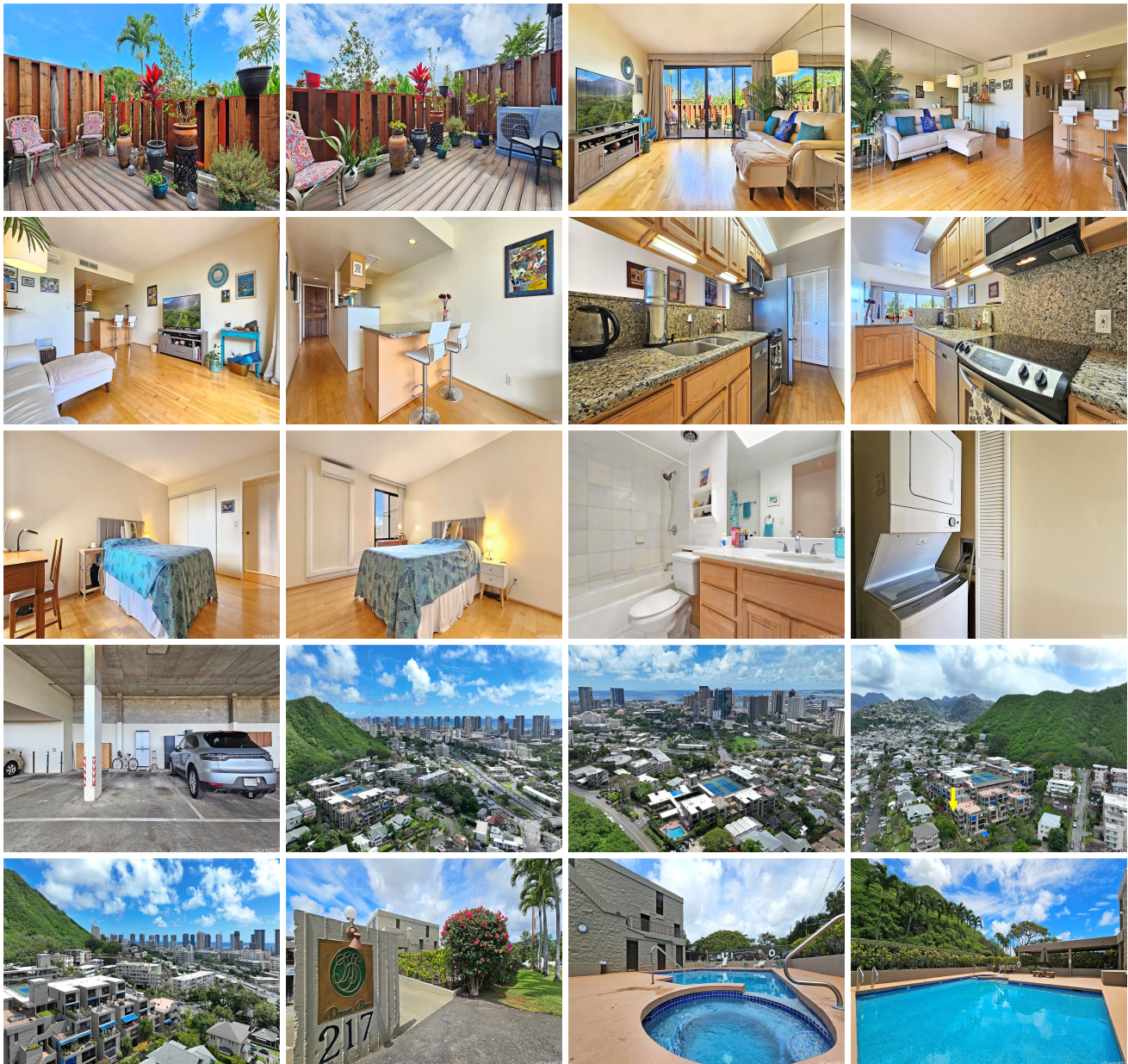


**Dowsett Point 217 Prospect Street Unit D12, Honolulu 96813 \* \$529,000**

Beds: <b>1</b>	MLS#: <b>202412651, FS</b>	Year Built: <b>1980</b>
Bath: <b>1/0</b>	Status: <b>Active</b>	Remodeled:
Living Sq. Ft.: <b>771</b>	List Date & DOM: <b>06-05-2024 &amp; 21</b>	Total Parking: <b>1</b>
Land Sq. Ft.: <b>102,540</b>	Condition: <b>Above Average</b>	<a href="#">Assessed Value</a>
Lanai Sq. Ft.: <b>141</b>	Frontage:	Building: <b>\$367,200</b>
Sq. Ft. Other: <b>0</b>	Tax/Year: <b>\$107/2024</b>	Land: <b>\$98,500</b>
Total Sq. Ft. <b>912</b>	Neighborhood: <b>Punchbowl Area</b>	Total: <b>\$465,700</b>
Maint./Assoc. <b>\$808 / \$0</b>	<a href="#">Flood Zone</a> : <b>Zone X - Tool</b>	Stories / CPR: <b>One / No</b>
Parking: <b>Assigned, Covered - 1, Secured Entry</b>	Frontage:	
<a href="#">Zoning</a> : <b>12 - A-2 Medium Density Apartme</b>	View: <b>City, Garden, Mountain</b>	

**Public Remarks:** SUNDAY OPEN HOSE on 6/23 2-5PM! Discover a peaceful corner 1-bedroom residence with a lanai nestled in the heart of urban Honolulu! Located on the scenic slopes of Punchbowl, this pet-friendly mid-rise condominium at Dowsett Point offers a tranquil oasis complete with a sparkling swimming pool and tennis courts. Enjoy 771 square feet of interior space complemented by 141 square feet of outdoor lanai. The unit features 2 Mitsubishi split ACs, an awning, smooth ceilings, and more! Conveniently situated near Honolulu's business district, Queen's Hospital, Vibrant Kakaako and with easy freeway access, this home perfectly balances serenity and city living. Don't miss out on this unique opportunity! **Sale Conditions:** None **Schools:** , , \* [Request Showing](#), [Photos](#), [History](#), [Maps](#), [Deed](#), [Watch List](#), [Tax Info](#)





Address	Price	Bd & Bth	Living / Avg.	Land   Avg.	DOM
<a href="#">217 Prospect Street D12</a>	\$529,000	1 & 1/0	771   \$686	102,540   \$5	21

Address	Tax   Maint.   Ass.	Assessed Land	Assessed Building	Assessed Total	Ratio	Year & Remodeled
<a href="#">217 Prospect Street D12</a>	\$107   \$808   \$0	\$98,500	\$367,200	\$465,700	114%	1980 & NA

[217 Prospect Street D12](#) - MLS#: [202412651](#) - SUNDAY OPEN HOSE on 6/23 2-5PM! Discover a peaceful corner 1-bedroom residence with a lanai nestled in the heart of urban Honolulu! Located on the scenic slopes of Punchbowl, this pet-friendly mid-rise condominium at Dowsett Point offers a tranquil oasis complete with a sparkling swimming pool and tennis courts. Enjoy 771 square feet of interior space complemented by 141 square feet of outdoor lanai. The unit features 2 Mitsubishi split ACs, an awning, smooth ceilings, and more! Conveniently situated near Honolulu's business district, Queen's Hospital, Vibrant Kakaako and with easy freeway access, this home perfectly balances serenity and city living. Don't miss out on this unique opportunity! **Region:** Metro **Neighborhood:** Punchbowl Area **Condition:** Above Average **Parking:** Assigned, Covered - 1, Secured Entry **Total Parking:** 1 **View:** City, Garden, Mountain **Frontage:** **Pool:** **Zoning:** 12 - A-2 Medium Density Apartme **Sale Conditions:** None **Schools:** , , \* [Request Showing](#), [Photos](#), [History](#), [Maps](#), [Deed](#), [Watch List](#), [Tax Info](#)

DOM = Days on Market