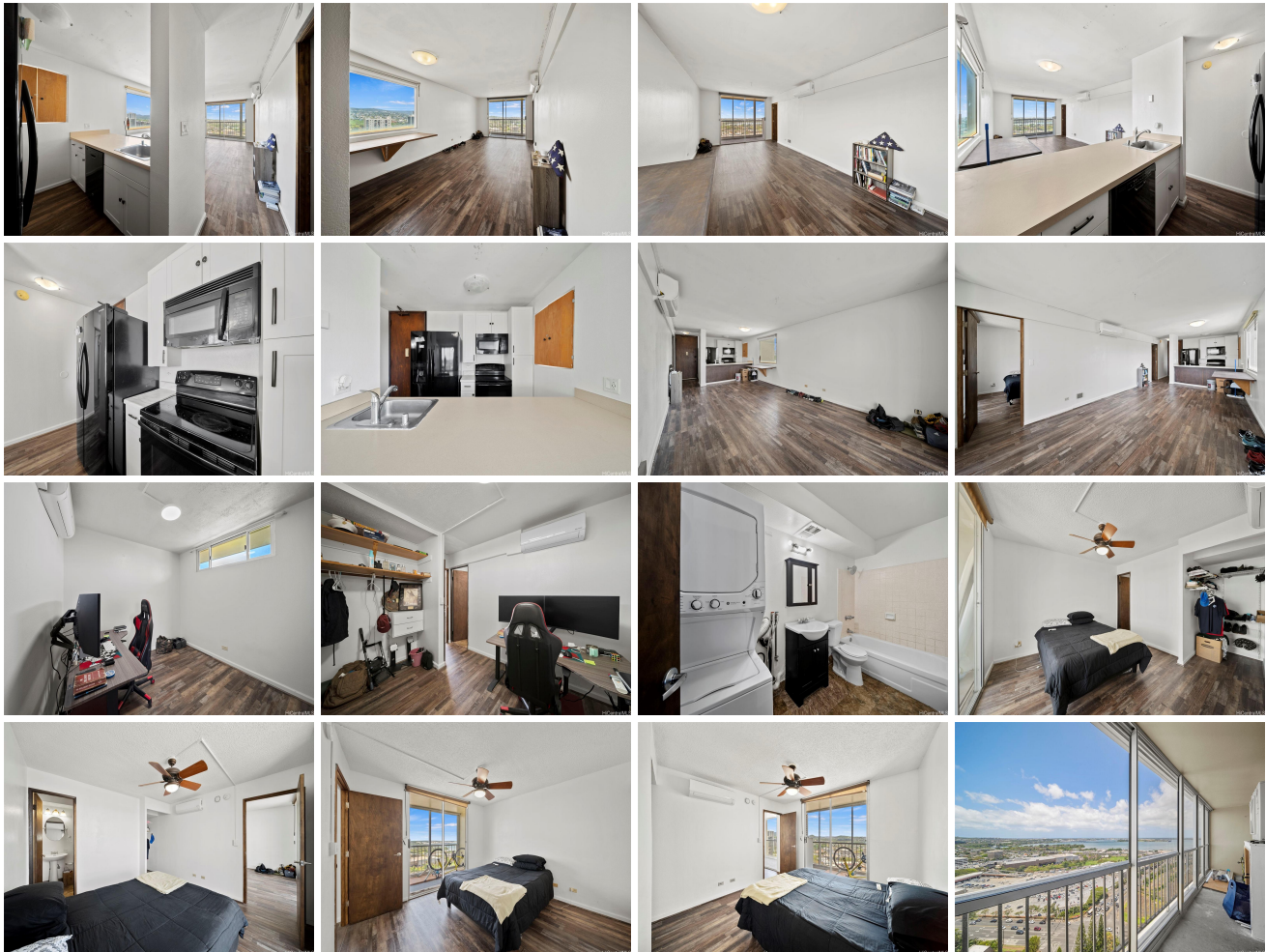


Lele Pono 98-099 Uao Place Unit 2301, Aiea 96701 * Lele Pono * \$580,000

Beds: 2	MLS#: 202412656, FS	Year Built: 1976
Bath: 2/0	Status: Active	Remodeled:
Living Sq. Ft.: 792	List Date & DOM: 06-07-2024 & 36	Total Parking: 2
Land Sq. Ft.: 93,785	Condition: Above Average, Average	Assessed Value
Lanai Sq. Ft.: 0	Frontage: Other	Building: \$446,200
Sq. Ft. Other: 0	Tax/Year: \$109/2024	Land: \$47,800
Total Sq. Ft. 792	Neighborhood: Pearlridge	Total: \$494,000
Maint./Assoc. \$730 / \$0	Flood Zone : Zone X - Tool	Stories / CPR: 21+ / No
Parking: Assigned, Covered - 2, Guest, Tandem	Frontage: Other	
Zoning : 12 - A-2 Medium Density Apartme	View: Coastline, Diamond Head, Mountain, Ocean	

Public Remarks: 4.99% VA ASSUMABLE LOAN. Beautiful 23rd floor 2 bedroom, 2 full bathroom, 2 parking condo in the highly sought-after Lele Pono building. Rarely available end unit facing Diamond Head and mountains, allowing for gorgeous views throughout the unit. Popcorn ceilings have been removed from most of the unit. This unit comes with washer, dryer, dishwasher, and outside storage. Enjoy the views from the large enclosed lanai with 2 entry points. Experience the comfort of this unit equipped with split AC and fans. This condo is a perfect blend of comfort, and breathtaking views of Diamond Head, Pearl Harbor, and mountains, offering an unparalleled living experience. Lele Pono is minutes away from Pearlridge shopping Center, restaurants, Pali Momi Hospital, freeway, public transportation, and Joint Base Pearl Harbor-Hickam. Enjoy the amenities this community has to offer such as swimming pool, hot tub, BBQ area, guest parking, 24 hour security, and gated entry to the building and parking. You must see this wonderful unit to fully experience its beauty and charm. Don't miss out!

Sale Conditions: None **Schools:** , , * [Request Showing](#), [Photos](#), [History](#), [Maps](#), [Deed](#), [Watch List](#), [Tax Info](#)





Address	Price	Bd & Bth	Living / Avg.	Land Avg.	Lanai	Occ.	FL	DOM
98-099 Uao Place 2301	\$580,000	2 & 2/0	792 \$732	93,785 \$6	0	49%	23	36

Address	Tax Maint. Ass.	Assessed Land	Assessed Building	Assessed Total	Ratio	Year & Remodeled
98-099 Uao Place 2301	\$109 \$730 \$0	\$47,800	\$446,200	\$494,000	117%	1976 & NA

[98-099 Uao Place 2301](#) - MLS#: [202412656](#) - 4.99% VA ASSUMABLE LOAN. Beautiful 23rd floor 2 bedroom, 2 full bathroom, 2 parking condo in the highly sought-after Lele Pono building. Rarely available end unit facing Diamond Head and mountains, allowing for gorgeous views throughout the unit. Popcorn ceilings have been removed from most of the unit. This unit comes with washer, dryer, dishwasher, and outside storage. Enjoy the views from the large enclosed lanai with 2 entry points. Experience the comfort of this unit equipped with split AC and fans. This condo is a perfect blend of comfort, and breathtaking views of Diamond Head, Pearl Harbor, and mountains, offering an unparalleled living experience. Lele Pono is minutes away from Pearlridge shopping Center, restaurants, Pali Momi Hospital, freeway, public transportation, and Joint Base Pearl Harbor-Hickam. Enjoy the amenities this community has to offer such as swimming pool, hot tub, BBQ area, guest parking, 24 hour security, and gated entry to the building and parking. You must see this wonderful unit to fully experience its beauty and charm. Don't miss out! **Region:** Pearl City **Neighborhood:** Pearlridge **Condition:** Above Average, Average **Parking:** Assigned, Covered - 2, Guest, Tandem **Total Parking:** 2 **View:** Coastline, Diamond Head, Mountain, Ocean **Frontage:** Other **Pool:** **Zoning:** 12 - A-2 Medium Density Apartme **Sale Conditions:** None **Schools:** , , * [Request Showing](#), [Photos](#), [History](#), [Maps](#), [Deed](#), [Watch List](#), [Tax Info](#)

DOM = Days on Market, Occ. = Occupancy, FL = Floor Number