

**Pats at Punaluu 53-567 Kamehameha Highway Unit 501, Hauula 96717 \* Pats at Punaluu \***

**\$495,000**

Beds: **0**  
 Bath: **1/0**  
 Living Sq. Ft.: **468**  
 Land Sq. Ft.: **126,672**  
 Lanai Sq. Ft.: **246**  
 Sq. Ft. Other: **0**  
 Total Sq. Ft. **714**  
 Maint./Assoc. **\$802 / \$0**  
 Parking: **Open - 1**

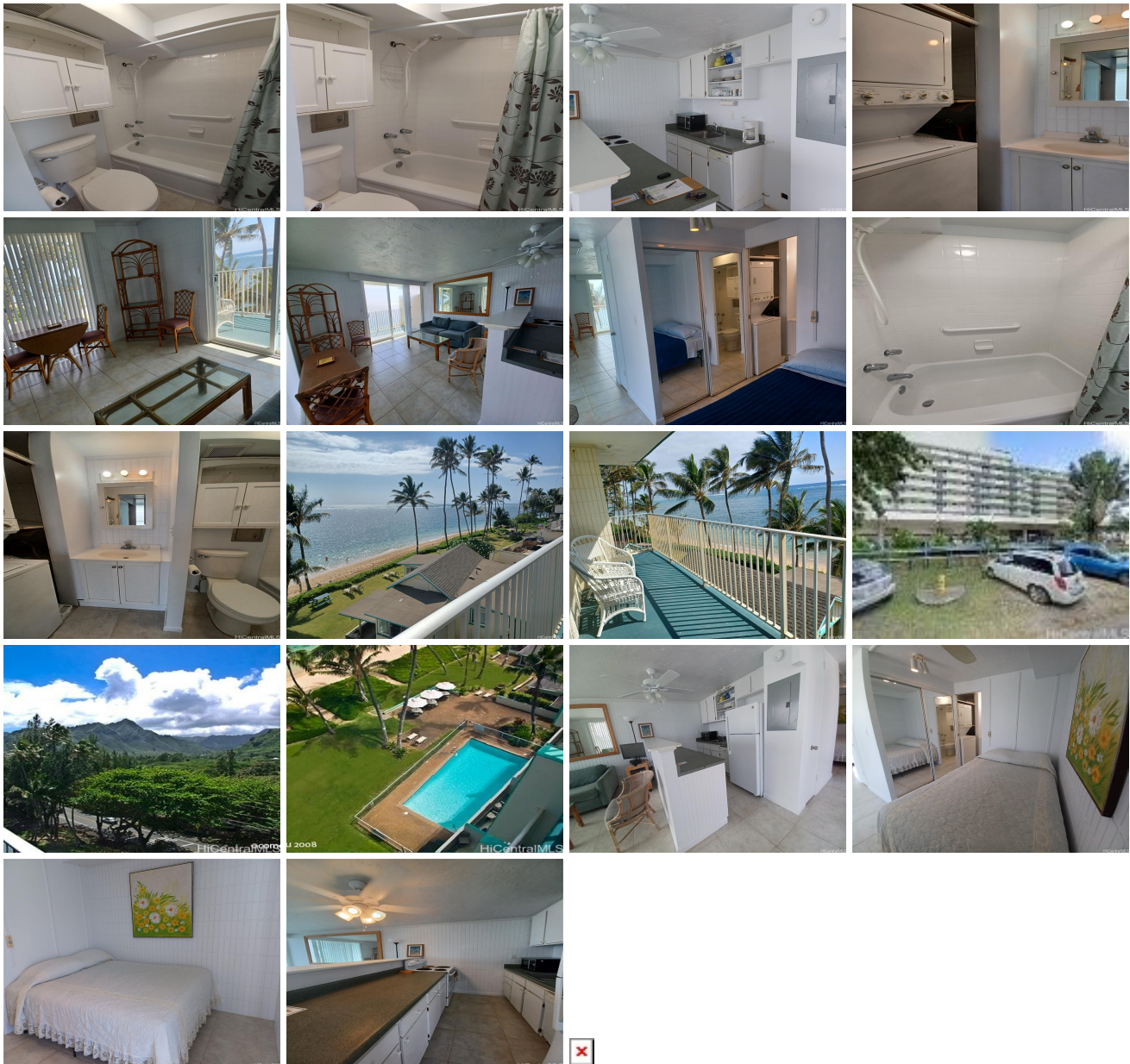
MLS#: **202412673, FS**  
 Status: **Active**  
 List Date & DOM: **06-16-2024 & 13**  
 Condition: **Above Average**  
 Frontage: **Ocean, Sandy Beach**  
 Tax/Year: **\$87/2024**  
 Neighborhood: **Punaluu**  
Flood Zone: **Zone AE - Tool**

Year Built: **1975**  
 Remodeled:  
 Total Parking: **1**  
[Assessed Value](#)  
 Building: **\$362,100**  
 Land: **\$46,800**  
 Total: **\$408,900**  
 Stories / CPR: **4-7 / No**

Zoning: **12 - A-2 Medium Density Apartme**

Frontage: **Ocean, Sandy Beach**  
 View: **Mountain, Ocean, Sunrise**

**Public Remarks:** Lovely and well maintained end unit, consisting of a wrap around balcony with an unobstructed and panoramic views of the sandy beach, mountains, early morning sunrise and Hawaii's beautiful blue ocean. Pats At Punaluu, offers amenities that includes a gym on the ground floor, large swimming pool, an outdoor BBQ area, with picnic tables, and storage for surfboards and kayaks. The grounds are well maintained that are charming for our residents, guests and welcoming to our visitors. Special monthly assessment of \$2,216.67 for the year 2024 will be paid by the seller. **Sale Conditions:** None **Schools:** [Hauula](#), [Kahuku](#), [Kahuku](#) \* [Request Showing](#), [Photos](#), [History](#), [Maps](#), [Deed](#), [Watch List](#), [Tax Info](#)



Address	Price	Bd & Bth	Living / Avg.	Land   Avg.	Lanai	Occ.	FL	DOM
---------	-------	----------	---------------	-------------	-------	------	----	-----

<a href="#">53-567 Kamehameha Highway 501</a>	<a href="#">\$495,000</a>	0 & 1/0	468   \$1,058	126,672   \$4	246	20%	5	13
---	---------------------------	---------	---------------	---------------	-----	-----	---	----

Address	Tax   Maint.   Ass.	Assessed Land	Assessed Building	Assessed Total	Ratio	Year & Remodeled
<a href="#">53-567 Kamehameha Highway 501</a>	\$87   \$802   \$0	\$46,800	\$362,100	\$408,900	121%	1975 & NA

[53-567 Kamehameha Highway 501](#) - MLS#: [202412673](#) - Lovely and well maintained end unit, consisting of a wrap around balcony with an unobstructed and panoramic views of the sandy beach, mountains, early morning sunrise and Hawaii's beautiful blue ocean. Pats At Punaluu, offers amenities that includes a gym on the ground floor, large swimming pool, an outdoor BBQ area, with picnic tables, and storage for surfboards and kayaks. The grounds are well maintained that are charming for our residents, guests and welcoming to our visitors. Special monthly assessment of \$2,216.67 for the year 2024 will be paid by the seller. **Region:** Kaneohe **Neighborhood:** Punaluu **Condition:** Above Average **Parking:** Open - 1 **Total Parking:** 1 **View:** Mountain, Ocean, Sunrise **Frontage:** Ocean,Sandy Beach **Pool:** **Zoning:** 12 - A-2 Medium Density Apartme **Sale Conditions:** None **Schools:** [Hauula](#), [Kahuku](#), [Kahuku](#) \* [Request Showing](#), [Photos](#), [History](#), [Maps](#), [Deed](#), [Watch List](#), [Tax Info](#)

DOM = Days on Market, Occ. = Occupancy, FL = Floor Number