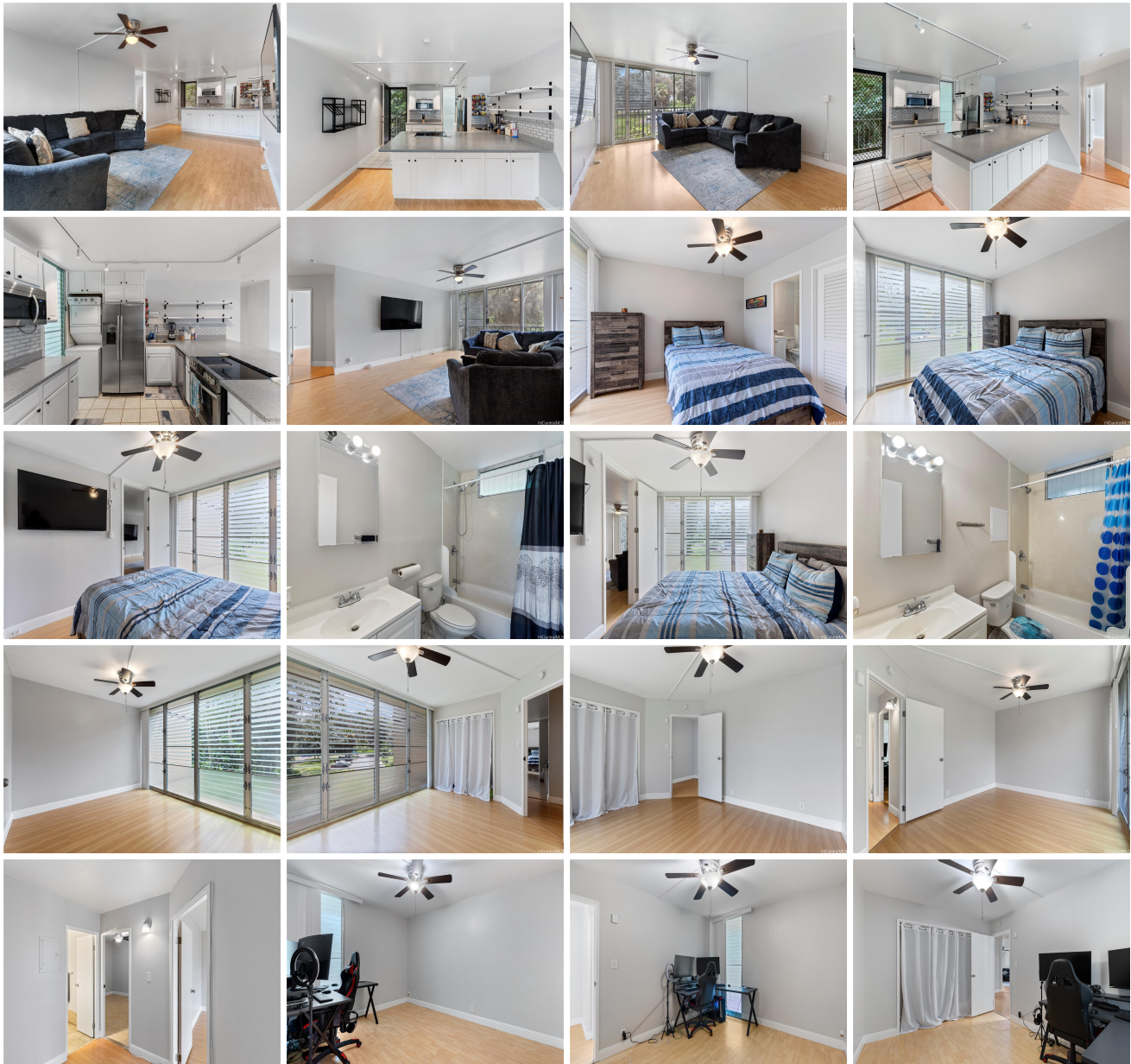


# Waikalani Woodlands 95-269 Waikalani Drive Unit C306, Mililani 96789 \* Waikalani

**Woodlands \* \$535,000**

Beds: <b>3</b>	MLS#: <b>202412677, FS</b>	Year Built: <b>1976</b>
Bath: <b>2/0</b>	Status: <b>Active Under Contract</b>	Remodeled:
Living Sq. Ft.: <b>1,023</b>	List Date & DOM: <b>06-06-2024 &amp; 24</b>	Total Parking: <b>2</b>
Land Sq. Ft.: <b>1,135,914</b>	Condition: <b>Above Average</b>	<a href="#">Assessed Value</a>
Lanai Sq. Ft.: <b>97</b>	Frontage:	Building: <b>\$86,200</b>
Sq. Ft. Other: <b>0</b>	Tax/Year: <b>\$55/2023</b>	Land: <b>\$302,200</b>
Total Sq. Ft. <b>1,120</b>	Neighborhood: <b>Waipio Acres-waikalani Woodlands</b>	Total: <b>\$388,400</b>
Maint./Assoc. <b>\$880 / \$0</b>	<a href="#">Flood Zone</a> : <b>Zone D - Tool</b>	Stories / CPR: <b>One / No</b>
Parking: <b>Assigned, Covered - 2</b>	Frontage:	
<a href="#">Zoning</a> : <b>05 - R-5 Residential District</b>	View: <b>None</b>	

**Public Remarks:** Experience tranquility in Launani Valley at Waikalani Woodlands. This private end unit features 3 bedrooms, 2 bathrooms, and 1,023 sq. ft. of living space, plus a 97 sq. ft. lanai with 2 assigned covered parking spaces. The primary bedroom with an ensuite is separated from the two guest bedrooms by a spacious living area. The home includes a refrigerator, range, dishwasher, disposal, ceiling fans, and washer/dryer. Community amenities include a resident manager, security guards, BBQ area, swimming pool, tennis court, dog park, walking paths, and a playground. Water, sewer, cable, and internet are included. Despite the serenity, you're just 5 minutes from Wahiawa, Schofield Barracks, and Mililani Town. Discover the perfect blend of nature and convenience. **Sale Conditions:** None **Schools:** , , \* [Request Showing](#), [Photos](#), [History](#), [Maps](#), [Deed](#), [Watch List](#), [Tax Info](#)





Address	Price	Bd & Bth	Living / Avg.	Land   Avg.	Lanai	Occ.	FL	DOM
<a href="#">95-269 Waikalani Drive C306</a>	<b>\$535,000</b>	3 & 2/0	1,023   \$523	1,135,914   \$0	97	65%	3	24

Address	Tax   Maint.   Ass.	Assessed Land	Assessed Building	Assessed Total	Ratio	Year & Remodeled
<a href="#">95-269 Waikalani Drive C306</a>	\$55   \$880   \$0	\$302,200	\$86,200	\$388,400	138%	1976 & NA

[95-269 Waikalani Drive C306](#) - MLS#: [202412677](#) - Experience tranquility in Launani Valley at Waikalani Woodlands. This private end unit features 3 bedrooms, 2 bathrooms, and 1,023 sq. ft. of living space, plus a 97 sq. ft. lanai with 2 assigned covered parking spaces. The primary bedroom with an ensuite is separated from the two guest bedrooms by a spacious living area. The home includes a refrigerator, range, dishwasher, disposal, ceiling fans, and washer/dryer. Community amenities include a resident manager, security guards, BBQ area, swimming pool, tennis court, dog park, walking paths, and a playground. Water, sewer, cable, and internet are included. Despite the serenity, you're just 5 minutes from Wahiawa, Schofield Barracks, and Mililani Town. Discover the perfect blend of nature and convenience. **Region:** Central  
**Neighborhood:** Waipio Acres-waikalani Woodlands **Condition:** Above Average **Parking:** Assigned, Covered - 2 **Total Parking:** 2 **View:** None **Frontage:** **Pool:** **Zoning:** 05 - R-5 Residential District **Sale Conditions:** None **Schools:** , , \*  
[Request Showing](#), [Photos](#), [History](#), [Maps](#), [Deed](#), [Watch List](#), [Tax Info](#)

DOM = Days on Market, Occ. = Occupancy, FL = Floor Number