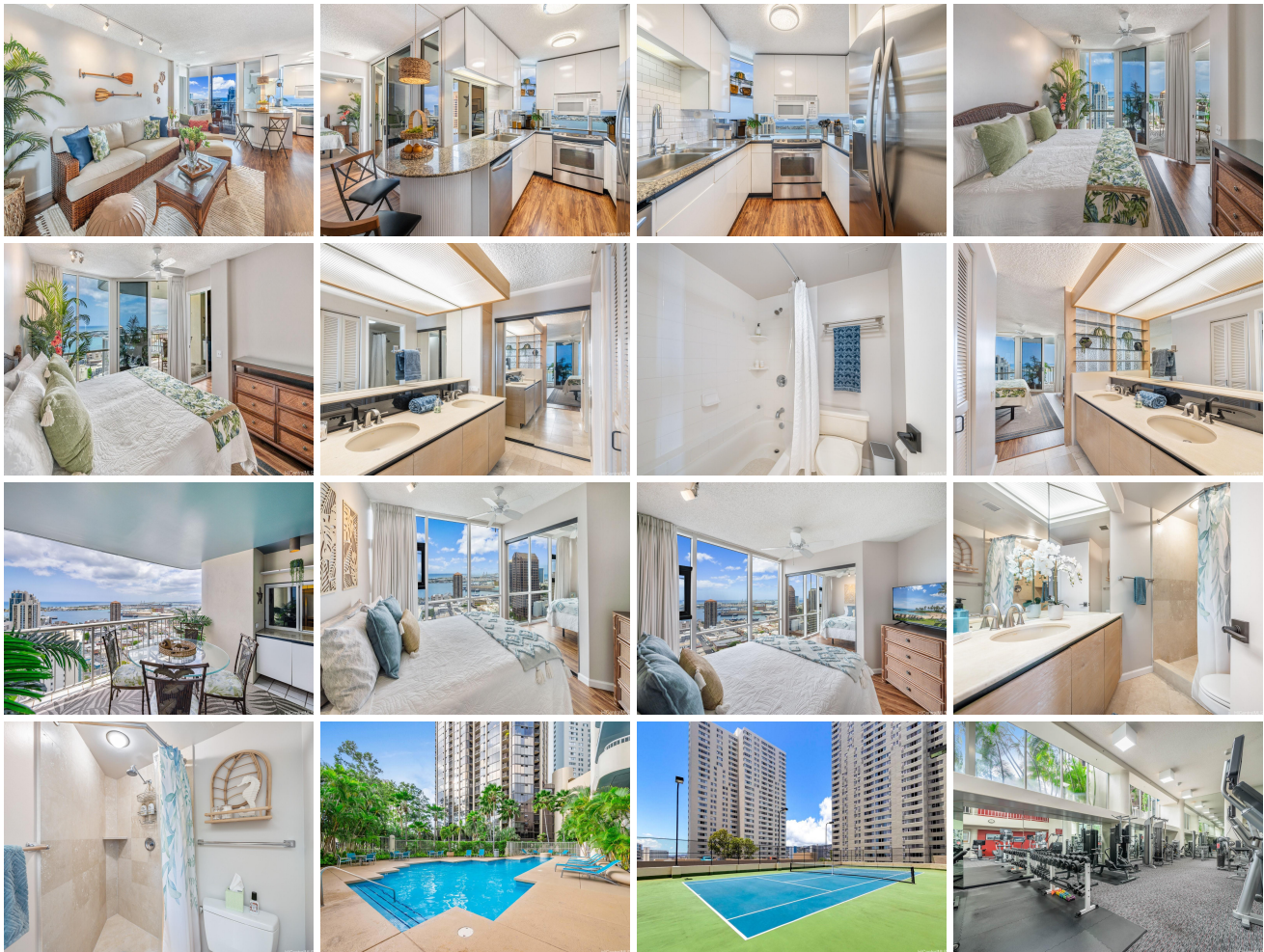


Honolulu Park Place 1212 Nuuanu Street Unit 3205, Honolulu 96817 * \$715,000

Beds: 2	MLS#: 202413727, FS	Year Built: 1989
Bath: 2/0	Status: Active Under Contract	Remodeled:
Living Sq. Ft.: 897	List Date & DOM: 06-07-2024 & 4	Total Parking: 2
Land Sq. Ft.: 0	Condition: Excellent	Assessed Value
Lanai Sq. Ft.: 129	Frontage:	Building: \$624,400
Sq. Ft. Other: 0	Tax/Year: \$168/2024	Land: \$52,200
Total Sq. Ft. 1,026	Neighborhood: Chinatown	Total: \$676,600
Maint./Assoc. \$1,153 / \$0	Flood Zone : Zone X - Tool	Stories / CPR: 21+ / No
Parking: Assigned, Covered - 2, Garage, Guest, Secured Entry	Frontage:	
Zoning : 34 - BMX-4 Central Business Mix	View: City, Coastline, Mountain, Ocean, Sunrise, Sunset	

Public Remarks: Experience urban luxury at Honolulu Park Place! This Fully Furnished chic 2-bedroom, 2-bathroom condo has been recently renovated, featuring stylish laminate and ceramic tile flooring, sleek modern fixtures, and high-end stainless steel appliances. Nestled in downtown Honolulu, this unit offers the perfect blend of convenience and sophistication. With a south-facing balcony, enjoy breathtaking ocean views that sparkle magenta at sunset, creating a picturesque end to your day. Living here means indulging in a vibrant lifestyle. Just steps away from the financial district, top-rated restaurants, and premier hospitals. Within the building, take advantage of unmatched amenities: a sparkling pool, relaxing jacuzzi, pickleball, and basketball courts, recreation and meeting rooms, cafe, a private bowling alley, full-size gym, and 24-hour security for your peace of mind. Our favorite amenity, however, is the outdoor grilling area with private tables surrounded by a koi pond, truly magical. Every detail in this condo is designed for comfort and elegance. Dive into the best of Honolulu living—schedule your private tour today! **Sale Conditions:** None **Schools:** [Kauluwela](#), [Keelikolani](#), [Mckinley](#) * [Request Showing, Photos, History, Maps, Deed, Watch List, Tax Info](#)





Address	Price	Bd & Bth	Living / Avg.	Land Avg.	DOM
1212 Nuuanu Street 3205	\$715,000	2 & 2/0	897 \$797	0 \$inf	4

Address	Tax Maint. Ass.	Assessed Land	Assessed Building	Assessed Total	Ratio	Year & Remodeled
1212 Nuuanu Street 3205	\$168 \$1,153 \$0	\$52,200	\$624,400	\$676,600	106%	1989 & NA

[1212 Nuuanu Street 3205](#) - MLS#: [202413727](#) - Experience urban luxury at Honolulu Park Place! This Fully Furnished chic 2-bedroom, 2-bathroom condo has been recently renovated, featuring stylish laminate and ceramic tile flooring, sleek modern fixtures, and high-end stainless steel appliances. Nestled in downtown Honolulu, this unit offers the perfect blend of convenience and sophistication. With a south-facing balcony, enjoy breathtaking ocean views that sparkle magenta at sunset, creating a picturesque end to your day. Living here means indulging in a vibrant lifestyle. Just steps away from the financial district, top-rated restaurants, and premier hospitals. Within the building, take advantage of unmatched amenities: a sparkling pool, relaxing jacuzzi, tennis, pickleball, and basketball courts, recreation and meeting rooms, cafe, a private bowling alley, full-size gym, and 24-hour security for your peace of mind. Our favorite amenity, however, is the outdoor grilling area with private tables surrounded by a koi pond, truly magical. Every detail in this condo is designed for comfort and elegance. Dive into the best of Honolulu living—schedule your private tour today! **Region:** Metro **Neighborhood:** Chinatown **Condition:** Excellent **Parking:** Assigned, Covered - 2, Garage, Guest, Secured Entry **Total Parking:** 2 **View:** City, Coastline, Mountain, Ocean, Sunrise, Sunset **Frontage:** **Pool:** **Zoning:** 34 - BMX-4 Central Business Mix **Sale Conditions:** None **Schools:** [Kauluwela](#), [Keelikolani](#), [Mckinley](#) * [Request Showing](#), [Photos](#), [History](#), [Maps](#), [Deed](#), [Watch List](#), [Tax Info](#)

DOM = Days on Market