

The Ritz-Carlton Residences Twr 2 - 383 2139 Kuhio Avenue Unit 2908, Honolulu 96815 *

\$1,485,000

Beds: **1**
 Bath: **2/0**
 Living Sq. Ft.: **714**
 Land Sq. Ft.: **0**
 Lanai Sq. Ft.: **28**
 Sq. Ft. Other: **0**
 Total Sq. Ft. **742**
 Maint./Assoc. **\$1,442 / \$0**
 Parking: **None, Other**

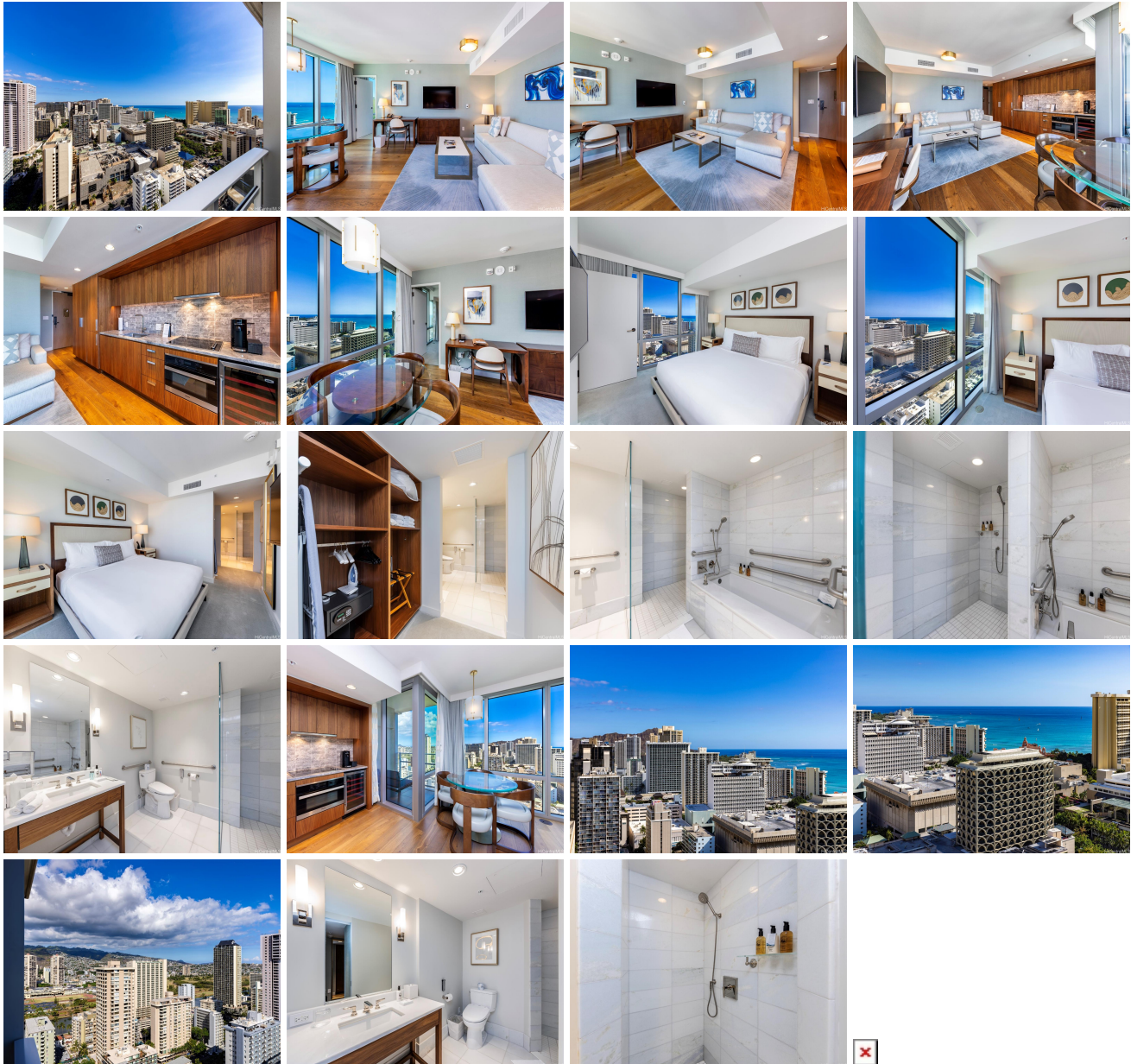
MLS#: **202413811, FS**
 Status: **Active**
 List Date & DOM: **06-07-2024 & 20**
 Condition: **Excellent**
 Frontage: **Other**
 Tax/Year: **\$1,342/2024**
 Neighborhood: **Waikiki**
 Flood Zone: **Zone AO - Tool**

Year Built: **2018**
 Remodeled:
 Total Parking: **0**
[Assessed Value](#)
 Building: **\$955,400**
 Land: **\$141,200**
 Total: **\$1,096,600**
 Stories / CPR: **21+ / No**

Zoning: **X6 - Resort Mixed Use Precinct**

Frontage: **Other**
 View: **Diamond Head, Ocean**

Public Remarks: Island-Style Luxury meets 5-Star Resort Living at the Ritz-Carlton Residences Waikiki. Located in the newer Diamond Head Tower 2 completed in 2018, this 1 bedroom, 2 full bath end-unit enjoys stunning 180-degree views of the Pacific Ocean, partial Diamond Head, Ala Wai Canal, and Ko'olau Mountains. Enter to find a contemporary floor plan combining living, kitchen, and dining spaces. A private lanai just off the main living area is the perfect place to enjoy morning sunrises with views of paradise. The bedroom suite also features direct Diamond Head and Ocean views, and features a true resort ensuite bathroom with separate deep soaking tub and walk-in shower. Centrally located in Waikiki, fine dining, high-end shopping, sandy beaches, stretching coastlines, and water activities are just minutes away. A Lifestyle of Luxury awaits at the Ritz. This property is an ADA-compliant unit. **Sale Conditions:** None **Schools:** [Jefferson](#), [Washington](#), [Kaimuki](#) * [Request Showing](#), [Photos](#), [History](#), [Maps](#), [Deed](#), [Watch List](#), [Tax Info](#)



Address	Price	Bd & Bth	Living / Avg.	Land Avg.	DOM
2139 Kuhio Avenue 2908	\$1,485,000	1 & 2/0	714 \$2,080	0 \$inf	20

Address	Tax Maint. Ass.	Assessed Land	Assessed Building	Assessed Total	Ratio	Year & Remodeled
2139 Kuhio Avenue 2908	\$1,342 \$1,442 \$0	\$141,200	\$955,400	\$1,096,600	135%	2018 & NA

[2139 Kuhio Avenue 2908](#) - MLS#: [202413811](#) - Island-Style Luxury meets 5-Star Resort Living at the Ritz-Carlton Residences Waikiki. Located in the newer Diamond Head Tower 2 completed in 2018, this 1 bedroom, 2 full bath end-unit enjoys stunning 180-degree views of the Pacific Ocean, partial Diamond Head, Ala Wai Canal, and Ko'olau Mountains. Enter to find a contemporary floor plan combining living, kitchen, and dining spaces. A private lanai just off the main living area is the perfect place to enjoy morning sunrises with views of paradise. The bedroom suite also features direct Diamond Head and Ocean views, and features a true resort ensuite bathroom with separate deep soaking tub and walk-in shower. Centrally located in Waikiki, fine dining, high-end shopping, sandy beaches, stretching coastlines, and water activities are just minutes away. A Lifestyle of Luxury awaits at the Ritz. This property is an ADA-compliant unit. **Region:** Metro **Neighborhood:** Waikiki **Condition:** Excellent **Parking:** None, Other **Total Parking:** 0 **View:** Diamond Head, Ocean **Frontage:** Other **Pool:** **Zoning:** X6 - Resort Mixed Use Precinct **Sale Conditions:** None **Schools:** [Jefferson](#), [Washington](#), [Kaimuki](#) * [Request Showing](#), [Photos](#), [History](#), [Maps](#), [Deed](#), [Watch List](#), [Tax Info](#)

DOM = Days on Market