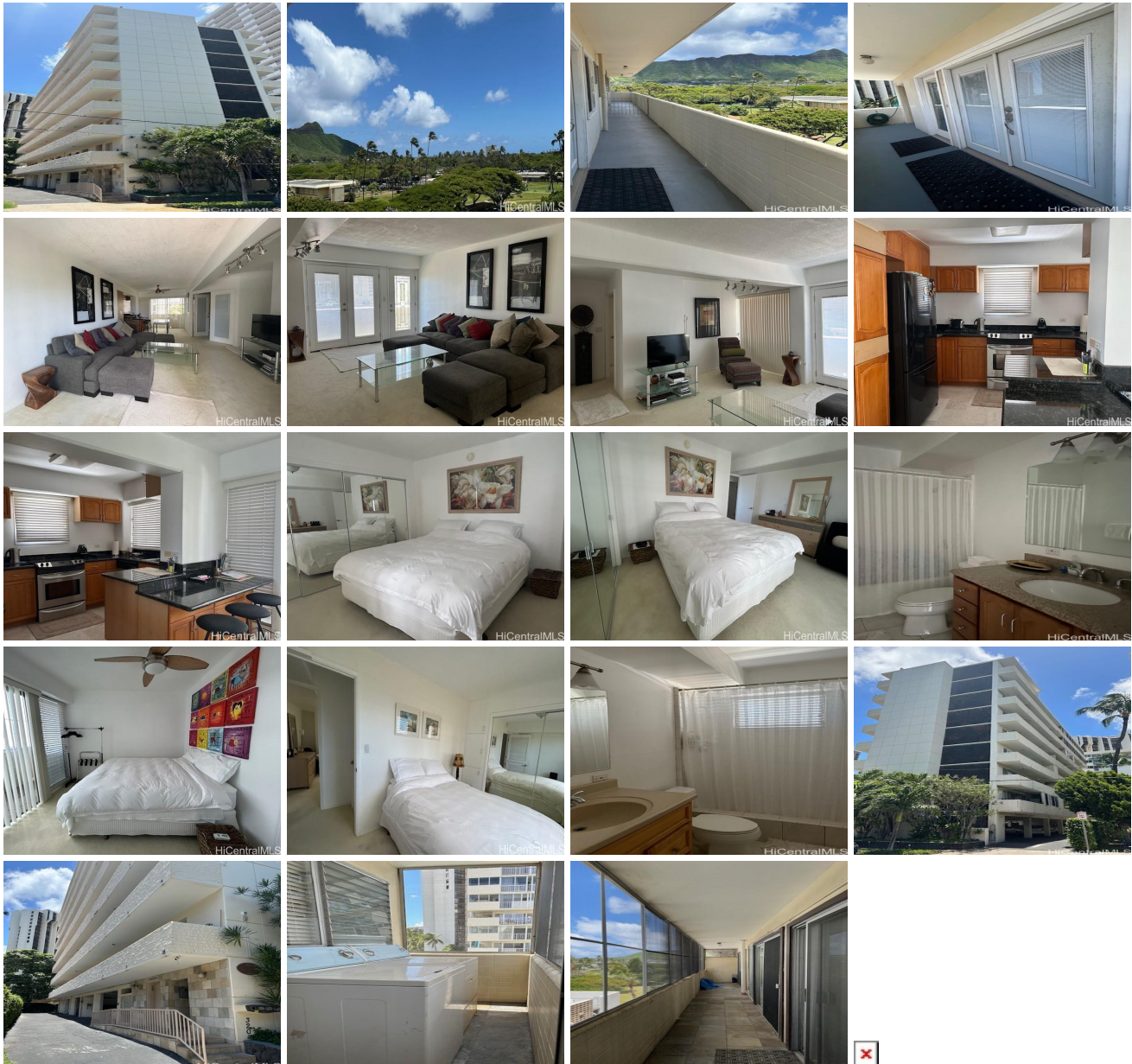


Hale O Nai'a 320 Ainakea Way Unit 712, Honolulu 96815 * Hale O Nai'a * \$740,000

Beds: 3	MLS#: 202413856, FS	Year Built: 1966
Bath: 2/0	Status: Active	Remodeled: 2006
Living Sq. Ft.: 1,161	List Date & DOM: 06-06-2024 & 41	Total Parking: 1
Land Sq. Ft.: 6,316	Condition: Above Average	Assessed Value
Lanai Sq. Ft.: 190	Frontage: Other	Building: \$684,600
Sq. Ft. Other: 0	Tax/Year: \$233/2023	Land: \$113,900
Total Sq. Ft. 1,351	Neighborhood: Waikiki	Total: \$798,500
Maint./Assoc. \$608 / \$0	Flood Zone : Zone AE,Zo - Tool	Stories / CPR: One, 4-7 / No
Parking: Assigned, Carport, Covered - 1	Frontage: Other	
Zoning : X2 - Apartment Precinct	View: City, Diamond Head, Mountain, Other, Sunrise, Sunset	

Public Remarks: Hale O Nai'a (Home of The Dolphin) S P A C I O U S Three Bedroom, Two Full Baths Condo Over 1,300 sq.ft. Living Areas with One Assigned Covered Parking Stall on the Quiet End of Famous Waikiki with Awesome Diamond Head, Sunrise and Sunset Views. High Floor Private Corner Unit, with Only Two Units On Floor, Key Elevator For Security. Completely Renovated in 2006 with Well-Designed Functional Layout. This Fully Furnished Turn-Key, Move-In Ready and Well-Kept Unit Features Gourmet Kitchen with Granite Counter Tops; Lots of Kitchen Cabinets; Stainless Steel Appliances; Range/Oven; Dishwasher; Refrigerator; Microwave; Granite Bathroom Counter Tops; Full Size Washer and Dryer in Unit; Two Water Heaters; Mirror Closet Doors; Window Coverings; Ceiling Fans and More ! Convenient Location with Close Distance to the World-Class Shopping, Array of Dining and Entertainments Options, Enjoy the Sun, Surf, Sand and Moon at Waikiki Beach, Honolulu Zoo, Waikiki Aquarium, Kapiolani Park, Diamond Head Hiking Trail, Jogging Paths and So Much More ! This is a MUST See ! Please Allow 24+ Hours Notice For Showing Appointment. Listor Must Be Present. Mahalo ! **Sale Conditions:** None **Schools:** [Jefferson](#), [Kaimuki](#), [Kaimuki](#) * [Request Showing](#), [Photos](#), [History](#), [Maps](#), [Deed](#), [Watch List](#), [Tax Info](#)



Address	Price	Bd & Bth	Living / Avg.	Land Avg.	Lanai	Occ.	FL	DOM
320 Ainakea Way 712	\$740,000	3 & 2/0	1,161 \$637	6,316 \$117	190	68%	7	41

Address	Tax Maint. Ass.	Assessed Land	Assessed Building	Assessed Total	Ratio	Year & Remodeled
320 Ainakea Way 712	\$233 \$608 \$0	\$113,900	\$684,600	\$798,500	93%	1966 & 2006

[320 Ainakea Way 712](#) - MLS#: [202413856](#) - Hale O Nai'a (Home of The Dolphin) S P A C I O U S Three Bedroom, Two Full Baths Condo Over 1,300 sq.ft. Living Areas with One Assigned Covered Parking Stall on the Quiet End of Famous Waikiki with Awesome Diamond Head, Sunrise and Sunset Views. High Floor Private Corner Unit, with Only Two Units On Floor, Key Elevator For Security. Completely Renovated in 2006 with Well-Designed Functional Layout. This Fully Furnished Turn-Key, Move-In Ready and Well-Kept Unit Features Gourmet Kitchen with Granite Counter Tops; Lots of Kitchen Cabinets; Stainless Steel Appliances; Range/Oven; Dishwasher; Refrigerator; Microwave; Granite Bathroom Counter Tops; Full Size Washer and Dryer in Unit; Two Water Heaters; Mirror Closet Doors; Window Coverings; Ceiling Fans and More ! Convenient Location with Close Distance to the World-Class Shopping, Array of Dining and Entertainments Options, Enjoy the Sun, Surf, Sand and Moon at Waikiki Beach, Honolulu Zoo, Waikiki Aquarium, Kapiolani Park, Diamond Head Hiking Trail, Jogging Paths and So Much More ! This is a MUST See ! Please Allow 24+ Hours Notice For Showing Appointment. Listor Must Be Present. Mahalo !

Region: Metro **Neighborhood:** Waikiki **Condition:** Above Average **Parking:** Assigned, Carport, Covered - 1 **Total Parking:** 1 **View:** City, Diamond Head, Mountain, Other, Sunrise, Sunset **Frontage:** Other **Pool:** **Zoning:** X2 - Apartment Precinct **Sale Conditions:** None **Schools:** [Jefferson](#), [Kaimuki](#), [Kaimuki](#) * [Request Showing](#), [Photos](#), [History](#), [Maps](#), [Deed](#), [Watch List](#), [Tax Info](#)

DOM = Days on Market, Occ. = Occupancy, FL = Floor Number