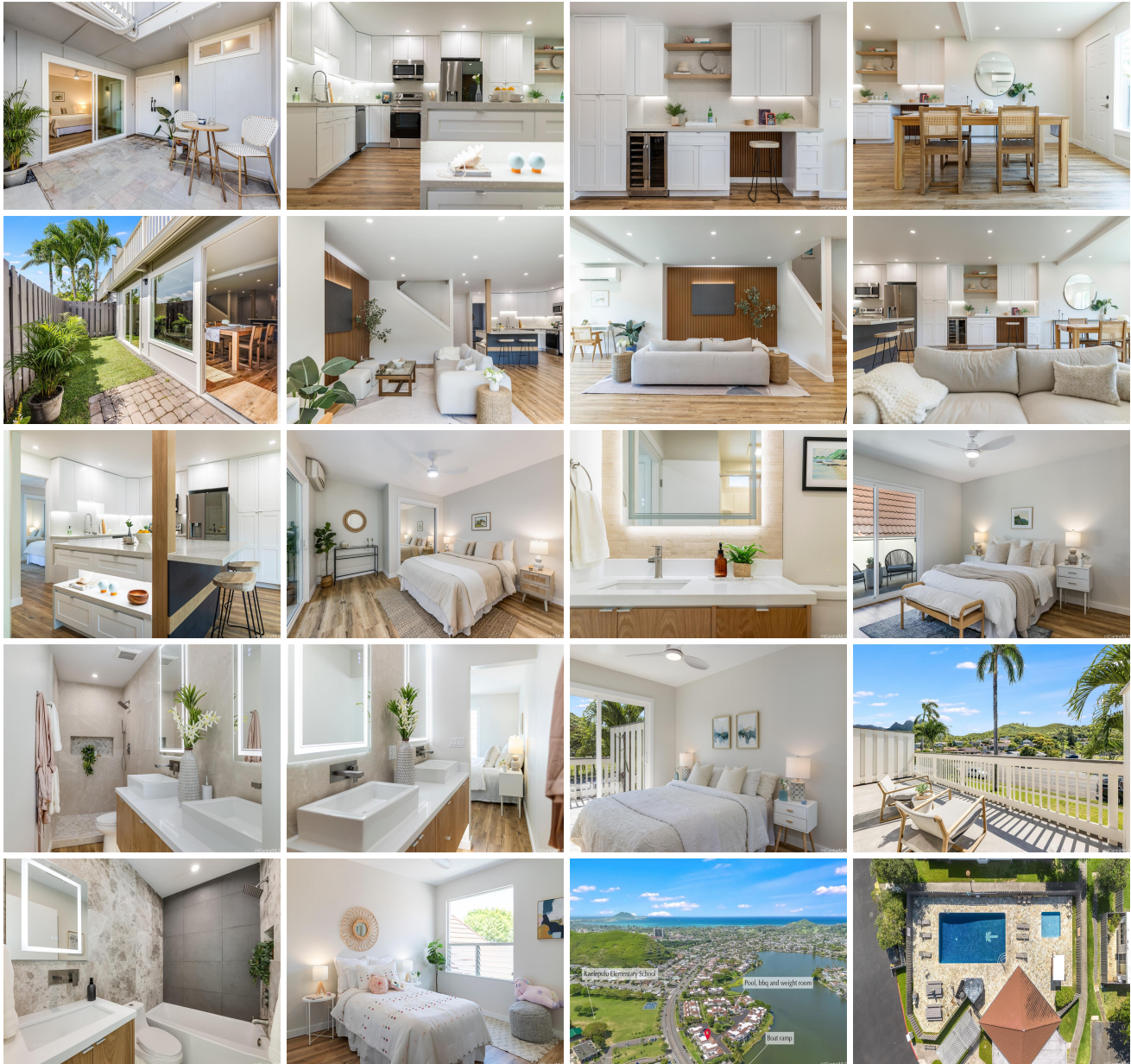


# **Kukilakila 515 Keolu Drive Unit E, Kailua 96734 \* Kukilakila \* \$1,490,000**

Beds: <b>5</b>	MLS#: <b>202413884, FS</b>	Year Built: <b>1974</b>
Bath: <b>3/0</b>	Status: <b>Active</b>	Remodeled: <b>2024</b>
Living Sq. Ft.: <b>1,881</b>	List Date & DOM: <b>06-11-2024 &amp; 36</b>	Total Parking: <b>2</b>
Land Sq. Ft.: <b>1,942</b>	Condition: <b>Excellent</b>	<a href="#">Assessed Value</a>
Lanai Sq. Ft.: <b>422</b>	Frontage: <b>Lake/Pond, Other</b>	Building: <b>\$788,900</b>
Sq. Ft. Other: <b>0</b>	Tax/Year: <b>\$25/2024</b>	Land: <b>\$408,200</b>
Total Sq. Ft. <b>2,303</b>	Neighborhood: <b>Kukilakila</b>	Total: <b>\$1,197,100</b>
Maint./Assoc. <b>\$905 / \$0</b>	<a href="#">Flood Zone</a> : <b>Zone X - Tool</b>	Stories / CPR: <b>Two / No</b>
Parking: <b>Covered - 2, Garage, Street</b>	Frontage: <b>Lake/Pond, Other</b>	View: <b>Mountain, Sunrise</b>
<a href="#">Zoning</a> : <b>05 - R-5 Residential District</b>		

**Public Remarks:** Rarely available 5BR/3BA home in the beloved Kukilakila Association with a 2 car garage. Meticulously designed and renovated with luxury touches throughout such as; Cambria quartz counters, double waterfall island, under cabinet lighting, marbled bathrooms with floating white oak cabinet doors. Extended cabinet and counters into the living space for additional storage with built in desk. Downstairs has a bedroom and full bath. En-suite upstairs has its own lanai, totaling 3 lanai spaces! Located on "Road 1" of the 10 acre lake front complex. The same road as the pool, BBQ area, weight room and closest to boat ramp where you can kayak, paddle or boat to famous Kailua Beach. Conveniently located by additional street parking and across from the Blue Ribbon awarded, Kaelepulu Elementary. Enjoy the many grassy common areas and watch the birds and fish as your explore the lake front walking path. This is truly a diamond in the heart of Kailua.

**Sale Conditions:** None **Schools:** , , \* [Request Showing](#), [Photos](#), [History](#), [Maps](#), [Deed](#), [Watch List](#), [Tax Info](#)





Address	Price	Bd & Bth	Living / Avg.	Land   Avg.	Lanai	Occ.	FL	DOM
<a href="#">515 Keolu Drive E</a>	<a href="#">\$1,490,000</a>	5 & 3/0	1,881   \$792	1,942   \$767	422	77%	1	36

Address	Tax   Maint.   Ass.	Assessed Land	Assessed Building	Assessed Total	Ratio	Year & Remodeled
<a href="#">515 Keolu Drive E</a>	\$25   \$905   \$0	\$408,200	\$788,900	\$1,197,100	124%	1974 & 2024

[515 Keolu Drive E](#) - MLS#: [202413884](#) - Rarely available 5BR/3BA home in the beloved Kukilakila Association with a 2 car garage. Meticulously designed and renovated with luxury touches throughout such as; Cambria quartz counters, double waterfall island, under cabinet lighting, marbled bathrooms with floating white oak cabinet doors. Extended cabinet and counters into the living space for additional storage with built in desk. Downstairs has a bedroom and full bath. En-suite upstairs has its own lanai, totaling 3 lanai spaces! Located on "Road 1" of the 10 acre lake front complex. The same road as the pool, BBQ area, weight room and closest to boat ramp where you can kayak, paddle or boat to famous Kailua Beach. Conveniently located by additional street parking and across from the Blue Ribbon awarded, Kaelepulu Elementary. Enjoy the many grassy common areas and watch the birds and fish as you explore the lake front walking path. This is truly a diamond in the heart of Kailua. **Region:** Kailua **Neighborhood:** Kukilakila **Condition:** Excellent **Parking:** Covered - 2, Garage, Street **Total Parking:** 2 **View:** Mountain, Sunrise **Frontage:** Lake/Pond,Other **Pool:** **Zoning:** 05 - R-5 Residential District **Sale Conditions:** None **Schools:** , , \* [Request Showing](#), [Photos](#), [History](#), [Maps](#), [Deed](#), [Watch List](#), [Tax Info](#)

DOM = Days on Market, Occ. = Occupancy, FL = Floor Number