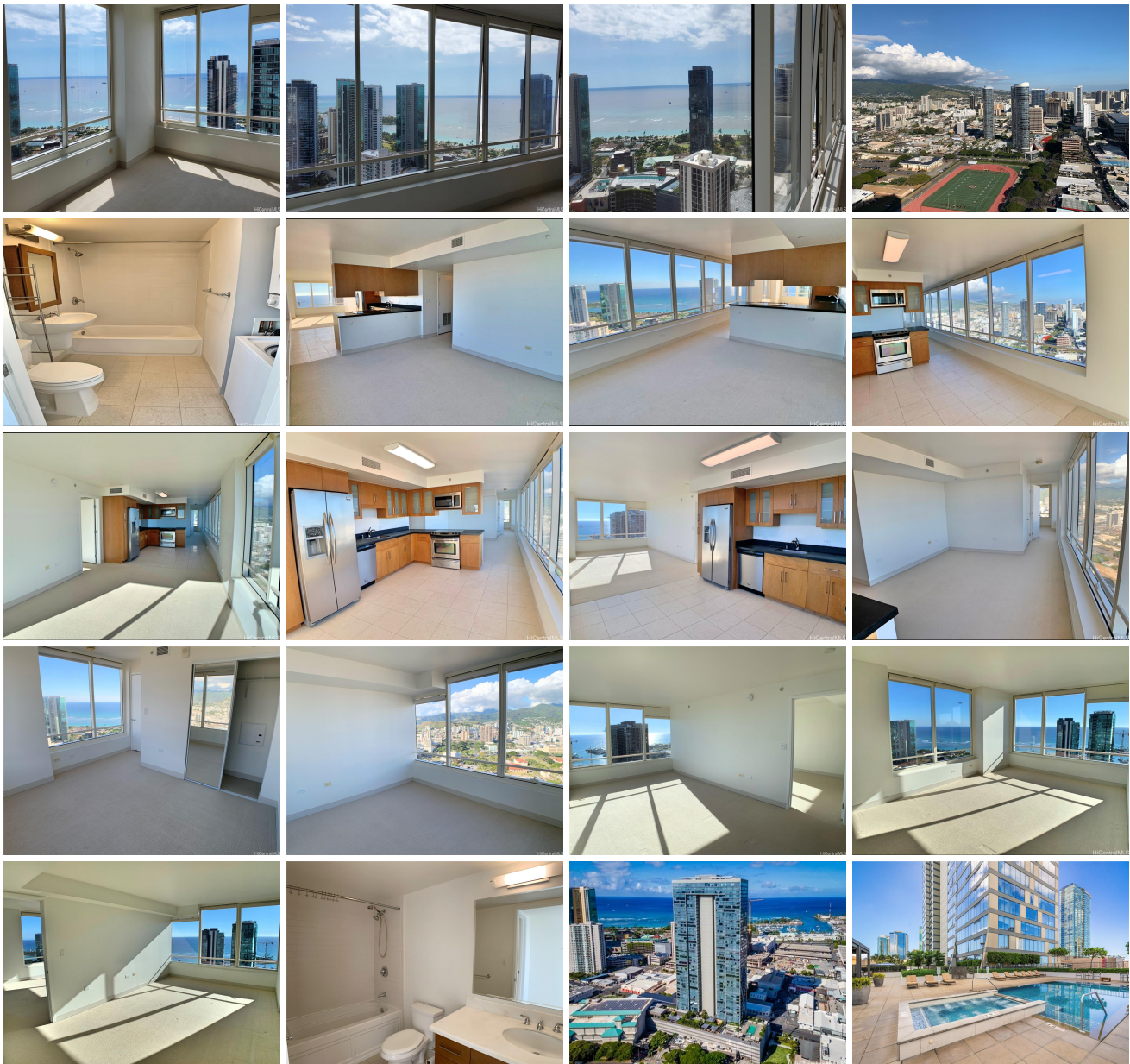


**Pacifica Honolulu 1009 Kapiolani Boulevard Unit 4503, Honolulu 96814 \* Pacifica Honolulu**

**\* \$1,220,000**

Beds: <b>2</b>	MLS#: <b>202413925, FS</b>	Year Built: <b>2011</b>
Bath: <b>2/0</b>	Status: <b>Active</b>	Remodeled:
Living Sq. Ft.: <b>1,124</b>	List Date & DOM: <b>06-10-2024 &amp; 37</b>	Total Parking: <b>2</b>
Land Sq. Ft.: <b>0</b>	Condition: <b>Above Average, Average</b>	<a href="#">Assessed Value</a>
Lanai Sq. Ft.: <b>0</b>	Frontage:	Building: <b>\$975,800</b>
Sq. Ft. Other: <b>0</b>	Tax/Year: <b>\$577/2023</b>	Land: <b>\$74,300</b>
Total Sq. Ft. <b>1,124</b>	Neighborhood: <b>Kakaako</b>	Total: <b>\$1,050,100</b>
Maint./Assoc. <b>\$1,261 / \$0</b>	<a href="#">Flood Zone</a> : <b>Zone AE - Tool</b>	Stories / CPR: / <b>No</b>
Parking: <b>Covered - 2</b>	Frontage:	
<a href="#">Zoning</a> : <b>Kak - Kakaako Community Development Project</b>	View: <b>City, Coastline, Diamond Head, Mountain, Ocean, Sunrise, Sunset</b>	

**Public Remarks:** Experience luxury living at its finest in this exceptional two-bedroom, penthouse-level corner unit in Pacifica Honolulu. Boasting breathtaking ocean views and the best vantage point in the building, this residence offers an unparalleled lifestyle in a prime location. Situated just moments from Ala Moana Shopping Center, Ward Village, and Whole Foods. Enjoy a range of top-tier amenities, including a fitness center, swimming pool, BBQ area, and more, all with reasonable maintenance fees. Don't miss the opportunity to own this exquisite penthouse-level unit in one of Honolulu's most desirable locations! **Sale Conditions:** None **Schools:** , , \* [Request Showing](#), [Photos](#), [History](#), [Maps](#), [Deed](#), [Watch List](#), [Tax Info](#)





Address	Price	Bd & Bth	Living / Avg.	Land   Avg.	Lanai	Occ.	FL	DOM
<a href="#">1009 Kapiolani Boulevard 4503</a>	<a href="#">\$1,220,000</a>	2 & 2/0	1,124   \$1,085	0   \$inf	0	65%	45	37

Address	Tax   Maint.   Ass.	Assessed Land	Assessed Building	Assessed Total	Ratio	Year & Remodeled
<a href="#">1009 Kapiolani Boulevard 4503</a>	\$577   \$1,261   \$0	\$74,300	\$975,800	\$1,050,100	116%	2011 & NA

[1009 Kapiolani Boulevard 4503](#) - MLS#: [202413925](#) - Experience luxury living at its finest in this exceptional two-bedroom, penthouse-level corner unit in Pacifica Honolulu. Boasting breathtaking ocean views and the best vantage point in the building, this residence offers an unparalleled lifestyle in a prime location. Situated just moments from Ala Moana Shopping Center, Ward Village, and Whole Foods. Enjoy a range of top-tier amenities, including a fitness center, swimming pool, BBQ area, and more, all with reasonable maintenance fees. Don't miss the opportunity to own this exquisite penthouse-level unit in one of Honolulu's most desirable locations! **Region:** Metro **Neighborhood:** Kakaako **Condition:** Above Average, Average **Parking:** Covered - 2 **Total Parking:** 2 **View:** City, Coastline, Diamond Head, Mountain, Ocean, Sunrise, Sunset **Frontage:** **Pool:** **Zoning:** Kak - Kakaako Community Development Project **Sale Conditions:** None **Schools:** , , \* [Request Showing](#), [Photos](#), [History](#), [Maps](#), [Deed](#), [Watch List](#), [Tax Info](#)

DOM = Days on Market, Occ. = Occupancy, FL = Floor Number