

Pacifica Honolulu 1009 Kapiolani Boulevard Unit 4503, Honolulu 96814 * \$1,220,000

Beds: **2**
Bath: **2/0**
Living Sq. Ft.: **1,124**
Land Sq. Ft.: **0**
Lanai Sq. Ft.: **0**
Sq. Ft. Other: **0**
Total Sq. Ft. **1,124**

Maint./Assoc. **\$1,261 / \$0**
Parking: **Covered - 2**

Zoning: **Kak - Kakaako Community Development Project**

MLS#: **202413925, FS**
Status: **Active**
List Date & DOM: **06-10-2024 & 17**
Condition: **Above Average, Average**
Frontage:
Tax/Year: **\$577/2023**
Neighborhood: **Kakaako**

Flood Zone: **Zone AE - Tool**

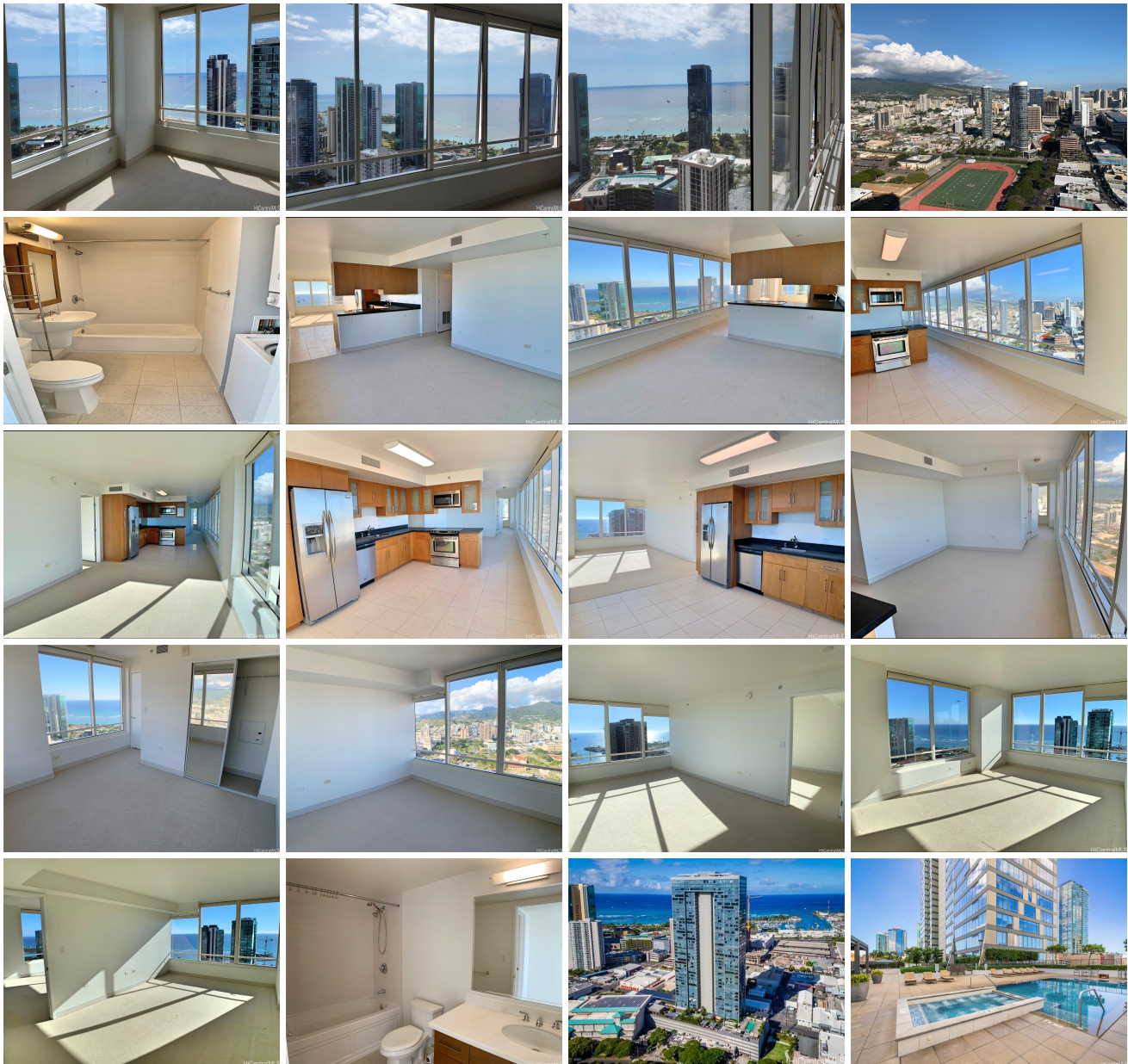
Frontage:

Year Built: **2011**
Remodeled:
Total Parking: **2**
[Assessed Value](#)
Building: **\$975,800**
Land: **\$74,300**
Total: **\$1,050,100**

Stories / CPR: / **No**

View: **City, Coastline, Diamond Head, Mountain, Ocean, Sunrise, Sunset**

Public Remarks: Experience luxury living at its finest in this exceptional two-bedroom, penthouse-level corner unit in Pacifica Honolulu. Boasting breathtaking ocean views and the best vantage point in the building, this residence offers an unparalleled lifestyle in a prime location. Situated just moments from Ala Moana Shopping Center, Ward Village, and Whole Foods. Enjoy a range of top-tier amenities, including a fitness center, swimming pool, BBQ area, and more, all with reasonable maintenance fees. Don't miss the opportunity to own this exquisite penthouse-level unit in one of Honolulu's most desirable locations! **Sale Conditions:** None **Schools:** , , * [Request Showing](#), [Photos](#), [History](#), [Maps](#), [Deed](#), [Watch List](#), [Tax Info](#)





| Address | Price | Bd & Bth | Living / Avg. | Land Avg. | DOM |
|---|-----------------------------|----------|-----------------|-------------|-----|
| 1009 Kapiolani Boulevard 4503 | \$1,220,000 | 2 & 2/0 | 1,124 \$1,085 | 0 \$inf | 17 |

| Address | Tax Maint. Ass. | Assessed Land | Assessed Building | Assessed Total | Ratio | Year & Remodeled |
|---|-----------------------|---------------|-------------------|----------------|-------|------------------|
| 1009 Kapiolani Boulevard 4503 | \$577 \$1,261 \$0 | \$74,300 | \$975,800 | \$1,050,100 | 116% | 2011 & NA |

[1009 Kapiolani Boulevard 4503](#) - MLS#: [202413925](#) - Experience luxury living at its finest in this exceptional two-bedroom, penthouse-level corner unit in Pacifica Honolulu. Boasting breathtaking ocean views and the best vantage point in the building, this residence offers an unparalleled lifestyle in a prime location. Situated just moments from Ala Moana Shopping Center, Ward Village, and Whole Foods. Enjoy a range of top-tier amenities, including a fitness center, swimming pool, BBQ area, and more, all with reasonable maintenance fees. Don't miss the opportunity to own this exquisite penthouse-level unit in one of Honolulu's most desirable locations! **Region:** Metro **Neighborhood:** Kakaako **Condition:** Above Average, Average **Parking:** Covered - 2 **Total Parking:** 2 **View:** City, Coastline, Diamond Head, Mountain, Ocean, Sunrise, Sunset **Frontage:** **Pool:** **Zoning:** Kak - Kakaako Community Development Project **Sale Conditions:** None **Schools:** , , * [Request Showing](#), [Photos](#), [History](#), [Maps](#), [Deed](#), [Watch List](#), [Tax Info](#)

DOM = Days on Market