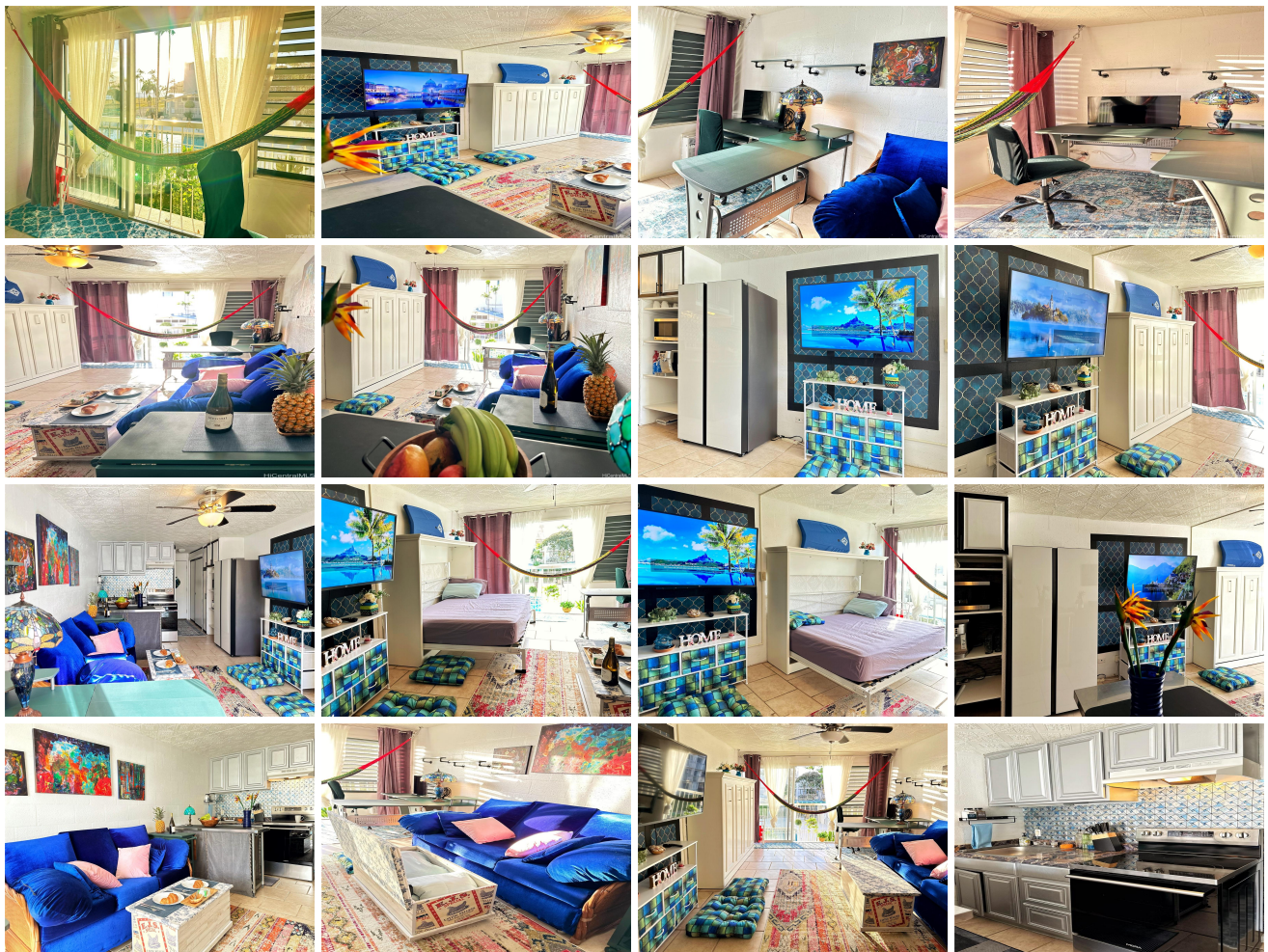


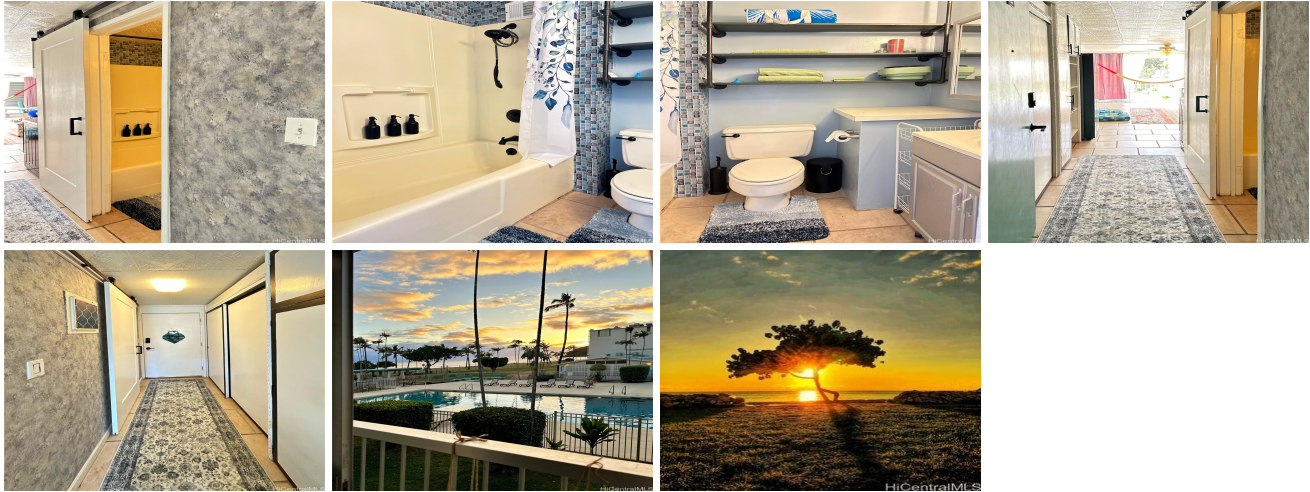
Makaha Surfside 85-175 Farrington Highway Unit C215, Waianae 96792 * Makaha Surfside

*** \$245,000 * Originally \$199,000**

Beds: 0	MLS#: 202413979, FS	Year Built: 1974
Bath: 1/0	Status: Active	Remodeled: 2024
Living Sq. Ft.: 361	List Date & DOM: 06-13-2024 & 14	Total Parking: 1
Land Sq. Ft.: 242,019	Condition: Excellent	Assessed Value
Lanai Sq. Ft.: 0	Ocean, Sandy Beach, Waterfront	Building: \$114,800
Sq. Ft. Other: 0	Tax/Year: \$43/2023	Land: \$32,400
Total Sq. Ft. 361	Neighborhood: Waianae	Total: \$147,200
Maint./Assoc. \$542 / \$0	Flood Zone : Zone AE - Tool	Stories / CPR: Two / No
Parking: Assigned, Open - 1	Frontage: Ocean, Sandy Beach, Waterfront	View: Ocean, Sunset
Zoning : 11 - A-1 Low Density Apartment		

Public Remarks: Welcome to your newly remodeled retreat in Oahu! This studio unit, located in the Makaha Surfside of West Oahu, offers captivating ocean views and a range of updated features. Enjoy fresh wallpaper and vibrant paint throughout the entire unit. It includes a new sliding door, a GE Convection Microwave Oven with Air Fry, a freestanding range oven, a Samsung side-by-side refrigerator, a refinished bathtub with a new shower, new curtains, a new TV and dresser stand, a new AC window unit, new garbage disposal, and a ceiling fan. The unit also boasts a beautiful Murphy bed, a queen-size sofa sleeper, and a Mayan-made hammock for relaxation. Additionally, it features an office set with a gorgeous ocean view. This gated community is situated along the picturesque Waianae Coast and offers direct ocean access. Amenities include two pools, a fitness center, a sauna, a BBQ area, and 24/7 security. Walk to the pure blue ocean, perfect for swimming with fish, turtles, and seals. Enjoy breathtaking ocean views and stunning sunsets right from your unit. This turnkey unit is waiting for you to take advantage of the opportunity to make this coastal retreat your own. **Sale Conditions:** None **Schools:** , , * [Request Showing](#), [Photos](#), [History](#), [Maps](#), [Deed](#), [Watch List](#), [Tax Info](#)





Address	Price	Bd & Bth	Living / Avg.	Land Avg.	Lanai	Occ.	FL	DOM
85-175 Farrington Highway C215	\$245,000	0 & 1/0	361 \$679	242,019 \$1	0	22%	2	14

Address	Tax Maint. Ass.	Assessed Land	Assessed Building	Assessed Total	Ratio	Year & Remodeled
85-175 Farrington Highway C215	\$43 \$542 \$0	\$32,400	\$114,800	\$147,200	166%	1974 & 2024

[85-175 Farrington Highway C215](#) - MLS#: [202413979](#) - Original price was \$199,000 - Welcome to your newly remodeled retreat in Oahu! This studio unit, located in the Makaha Surfside of West Oahu, offers captivating ocean views and a range of updated features. Enjoy fresh wallpaper and vibrant paint throughout the entire unit. It includes a new sliding door, a GE Convection Microwave Oven with Air Fry, a freestanding range oven, a Samsung side-by-side refrigerator, a refinished bathtub with a new shower, new curtains, a new TV and dresser stand, a new AC window unit, new garbage disposal, and a ceiling fan. The unit also boasts a beautiful Murphy bed, a queen-size sofa sleeper, and a Mayan-made hammock for relaxation. Additionally, it features an office set with a gorgeous ocean view. This gated community is situated along the picturesque Waianae Coast and offers direct ocean access. Amenities include two pools, a fitness center, a sauna, a BBQ area, and 24/7 security. Walk to the pure blue ocean, perfect for swimming with fish, turtles, and seals. Enjoy breathtaking ocean views and stunning sunsets right from your unit. This turnkey unit is waiting for you to take advantage of the opportunity to make this coastal retreat your own. **Region:** Leeward **Neighborhood:** Waianae **Condition:** Excellent **Parking:** Assigned, Open - 1 **Total Parking:** 1 **View:** Ocean, Sunset **Frontage:** Ocean, Sandy Beach, Waterfront **Pool:** **Zoning:** 11 - A-1 Low Density Apartment **Sale Conditions:** None **Schools:** , , * [Request Showing](#), [Photos](#), [History](#), [Maps](#), [Deed](#), [Watch List](#), [Tax Info](#)

DOM = Days on Market, Occ. = Occupancy, FL = Floor Number