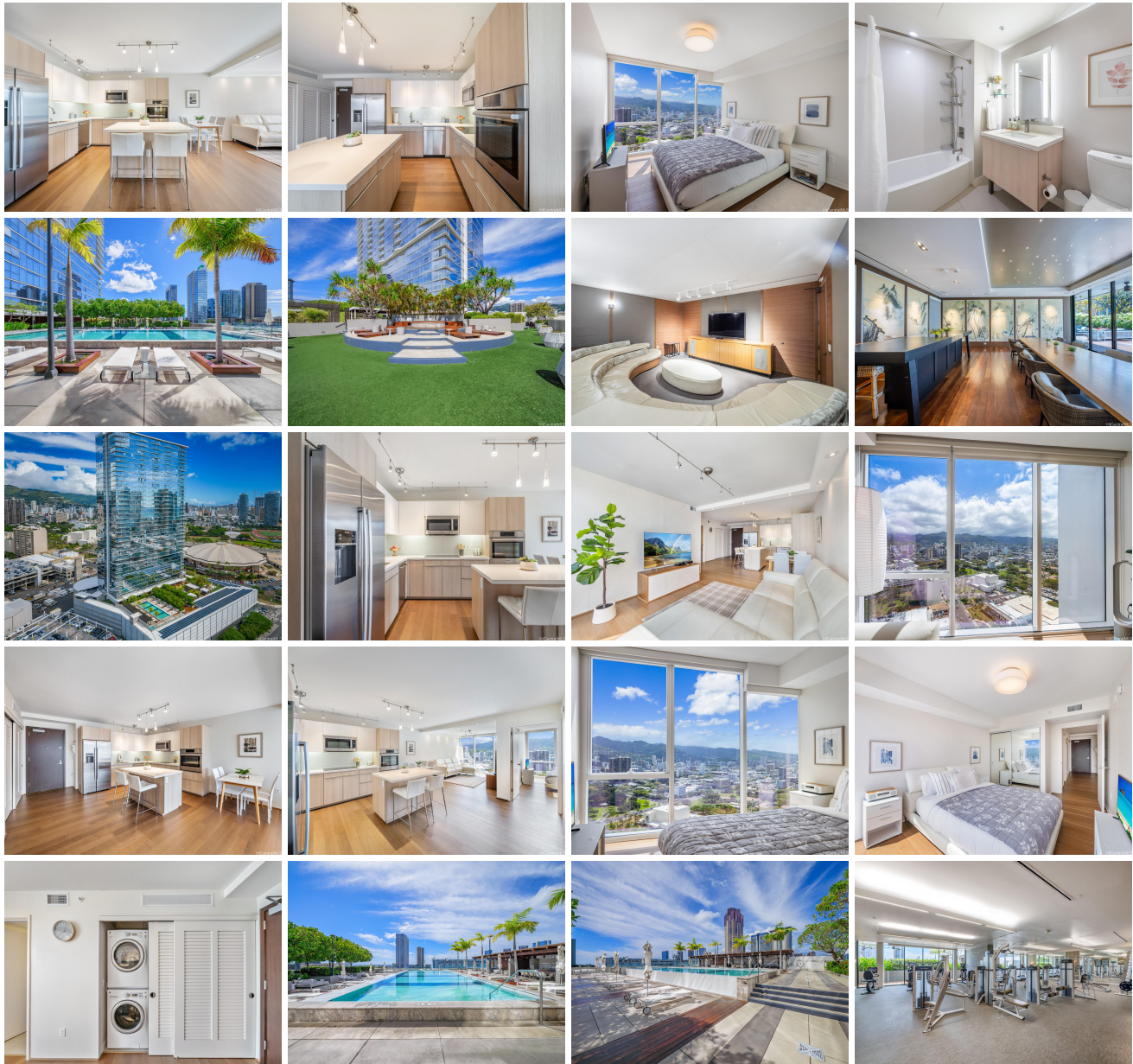
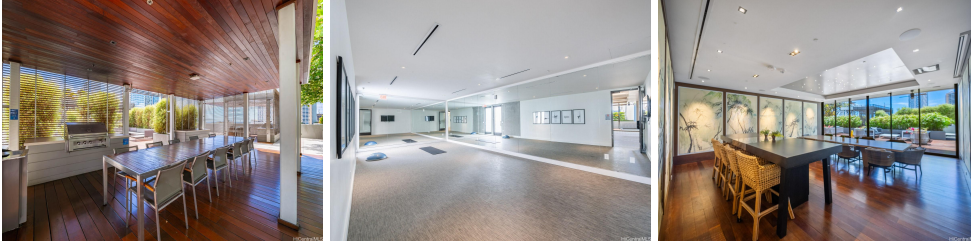


**Symphony Honolulu 888 Kapiolani Boulevard Unit 3801, Honolulu 96813 \* \$835,000**

Beds: <b>1</b>	MLS#: <b><u>202414042</u>, FS</b>	Year Built: <b>2016</b>
Bath: <b>1/0</b>	Status: <b>Active</b>	Remodeled:
Living Sq. Ft.: <b>672</b>	List Date & DOM: <b>06-11-2024 &amp; 16</b>	Total Parking: <b>2</b>
Land Sq. Ft.: <b>0</b>	Condition: <b>Excellent, Above Average</b>	<a href="#">Assessed Value</a>
Lanai Sq. Ft.: <b>0</b>	Frontage: <b>Other</b>	Building: <b>\$780,300</b>
Sq. Ft. Other: <b>0</b>	Tax/Year: <b>\$240/2024</b>	Land: <b>\$42,700</b>
Total Sq. Ft. <b>672</b>	Neighborhood: <b>Kakaako</b>	Total: <b>\$823,000</b>
Maint./Assoc. <b>\$570 / \$0</b>	<a href="#">Flood Zone</a> : <b>Zone X - Tool</b>	Stories / CPR: <b>One / No</b>
Parking: <b>Assigned, Covered - 2, Garage, Guest, Secured Entry, Tandem</b>	Frontage: <b>Other</b>	
<a href="#">Zoning</a> : <b>Kak - Kakaako Community Development Project</b>	View: <b>City, Mountain</b>	

**Public Remarks:** Welcome to the epitome of urban elegance at Symphony Honolulu, in this stunning 1 bedroom, 1 bathroom condo with tandem parking. Enjoy mountain and city views through floor-to-ceiling windows that illuminate a beautifully upgraded interior, including wood flooring, pendant lighting, and recessed lighting in custom living room soffits. The chef's kitchen features Studio Becker cabinets, quartz countertops, and Bosch appliances, complemented by a full-size washer and dryer. Experience unmatched amenities: an infinity pool, two hot tubs, BBQ cabanas, a party room, a fitness center, yoga room, movie theater, karaoke room, dog park, and guest suites. Located steps from Artizen and MW Restaurant, and across from the Neal Blaisdell Center, this condo is close to Ala Moana Center's shopping, dining, and beaches. Symphony Honolulu offers a lifestyle, not just a living space. Private showings Sunday 6/23 2-5pm. **Sale Conditions:** None **Schools:** , , \* [Request Showing](#), [Photos](#), [History](#), [Maps](#), [Deed](#), [Watch List](#), [Tax Info](#)





Address	Price	Bd & Bth	Living / Avg.	Land   Avg.	DOM
<a href="#">888 Kapiolani Boulevard 3801</a>	<a href="#">\$835,000</a>	1 & 1/0	672   \$1,243	0   \$inf	16

Address	Tax   Maint.   Ass.	Assessed Land	Assessed Building	Assessed Total	Ratio	Year & Remodeled
<a href="#">888 Kapiolani Boulevard 3801</a>	\$240   \$570   \$0	\$42,700	\$780,300	\$823,000	101%	2016 & NA

[888 Kapiolani Boulevard 3801](#) - MLS#: [202414042](#) - Welcome to the epitome of urban elegance at Symphony Honolulu, in this stunning 1 bedroom, 1 bathroom condo with tandem parking. Enjoy mountain and city views through floor-to-ceiling windows that illuminate a beautifully upgraded interior, including wood flooring, pendant lighting, and recessed lighting in custom living room soffits. The chef's kitchen features Studio Becker cabinets, quartz countertops, and Bosch appliances, complemented by a full-size washer and dryer. Experience unmatched amenities: an infinity pool, two hot tubs, BBQ cabanas, a party room, a fitness center, yoga room, movie theater, karaoke room, dog park, and guest suites. Located steps from Artizen and MW Restaurant, and across from the Neal Blaisdell Center, this condo is close to Ala Moana Center's shopping, dining, and beaches. Symphony Honolulu offers a lifestyle, not just a living space. Private showings Sunday 6/23 2-5pm. **Region:** Metro **Neighborhood:** Kakaako **Condition:** Excellent, Above Average **Parking:** Assigned, Covered - 2, Garage, Guest, Secured Entry, Tandem **Total Parking:** 2 **View:** City, Mountain **Frontage:** Other **Pool:** **Zoning:** Kak - Kakaako Community Development Project **Sale Conditions:** None **Schools:** , , \* [Request Showing](#), [Photos](#), [History](#), [Maps](#), [Deed](#), [Watch List](#), [Tax Info](#)

DOM = Days on Market