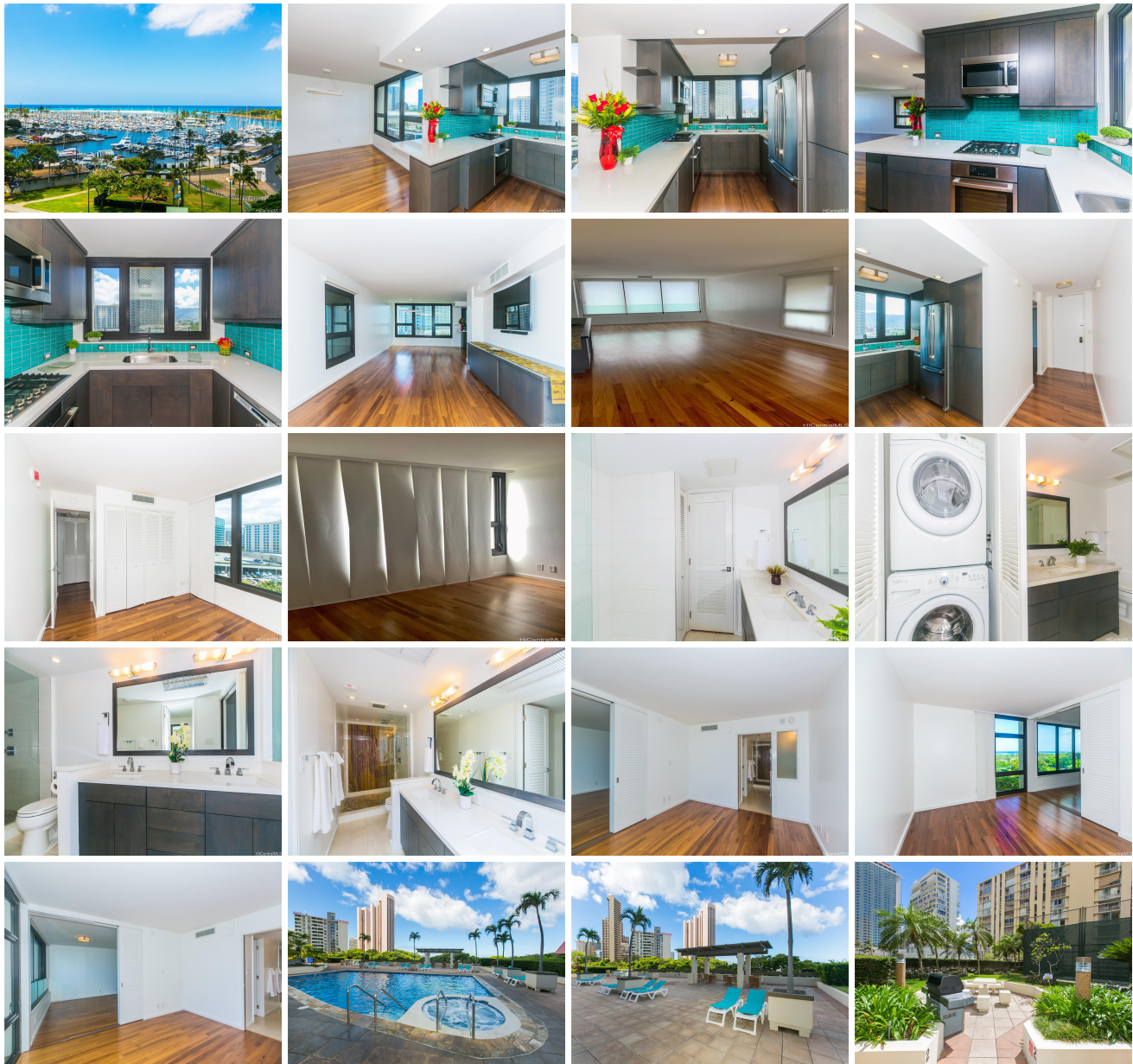


Yacht Harbor Towers 1600 Ala Moana Boulevard Unit 1012, Honolulu 96815 * Yacht Harbor

Towers * \$1,050,000 * Originally \$1,000,050

| | | |
|---|---|--------------------------------|
| Beds: 2 | MLS#: 202414085, FS | Year Built: 1973 |
| Bath: 2/0 | Status: Active | Remodeled: 2014 |
| Living Sq. Ft.: 1,428 | List Date & DOM: 06-11-2024 & 35 | Total Parking: 1 |
| Land Sq. Ft.: 138,216 | Condition: Excellent | Assessed Value |
| Lanai Sq. Ft.: 0 | Frontage: Other | Building: \$809,500 |
| Sq. Ft. Other: 0 | Tax/Year: \$252/2023 | Land: \$54,200 |
| Total Sq. Ft. 1,428 | Neighborhood: Ala Moana | Total: \$863,700 |
| Maint./Assoc. \$1,657 / \$0 | Flood Zone: Zone X - Tool | Stories / CPR: 21+ / No |
| Parking: Assigned, Covered - 1, Guest | Frontage: Other | |
| Zoning: 12 - A-2 Medium Density Apartme | View: City, Coastline, Mountain, Ocean, Sunset | |

Public Remarks: Corner End unit in the desirable Ewa Tower. Sweeping views of Yacht Harbor, Ala Moana Beach, and the Mountains. Walk to the Ala Moana Beach, Ala Moana Shopping Center. The unit was fully remodeled in 2014. Upgraded kitchen appliances, full size washer/dryer, Primary bathroom has a beautiful walk in shower. Motorized shades in the living room. SEE VIRTUAL TOUR BY CLICKING ON THE ABOVE ICON. Amenities include large size swimming pool, whirlpool, BBQ area, recreation room, tennis court, Fire Alarm System, and Security. Maintenance fee include electricity, gas, water/sewer, hot water, and central air. Make this your new home you will enjoy so much the location, friendly building, and awesome views! Guest Parking available The maintenance fee is \$ 1659.83 per month plus a Loan assessment of \$ 399.31 per month.
Sale Conditions: None **Schools:** , , * [Request Showing](#), [Photos](#), [History](#), [Maps](#), [Deed](#), [Watch List](#), [Tax Info](#)





| Address | Price | Bd & Bth | Living / Avg. | Land Avg. | Lanai | Occ. | FL | DOM |
|---|--------------------|----------|---------------|---------------|-------|------|----|-----|
| 1600 Ala Moana Boulevard 1012 | \$1,050,000 | 2 & 2/0 | 1,428 \$735 | 138,216 \$8 | 0 | 54% | 10 | 35 |

| Address | Tax Maint. Ass. | Assessed Land | Assessed Building | Assessed Total | Ratio | Year & Remodeled |
|---|-----------------------|---------------|-------------------|----------------|-------|------------------|
| 1600 Ala Moana Boulevard 1012 | \$252 \$1,657 \$0 | \$54,200 | \$809,500 | \$863,700 | 122% | 1973 & 2014 |

[1600 Ala Moana Boulevard 1012](#) - MLS#: [202414085](#) - Original price was \$1,000,050 - Corner End unit in the desirable Ewa Tower. Sweeping views of Yacht Harbor, Ala Moana Beach, and the Mountains. Walk to the Ala Moana Beach, Ala Moana Shopping Center. The unit was fully remodeled in 2014. Upgraded kitchen appliances, full size washer/dryer, Primary bathroom has a beautiful walk in shower. Motorized shades in the living room. SEE VIRTUAL TOUR BY CLICKING ON THE ABOVE ICON. Amenities include large size swimming pool, whirlpool, BBQ area, recreation room, tennis court, Fire Alarm System, and Security. Maintenance fee include electricity, gas, water/sewer, hot water, and central air. Make this your new home you will enjoy so much the location, friendly building, and awesome views! Guest Parking available The maintenance fee is \$ 1659.83 per month plus a Loan assessment of \$ 399.31 per month. **Region:** Metro **Neighborhood:** Ala Moana **Condition:** Excellent **Parking:** Assigned, Covered - 1, Guest **Total Parking:** 1 **View:** City, Coastline, Mountain, Ocean, Sunset **Frontage:** Other **Pool:** **Zoning:** 12 - A-2 Medium Density Apartme **Sale Conditions:** None **Schools:** , , * [Request Showing](#), [Photos](#), [History](#), [Maps](#), [Deed](#), [Watch List](#), [Tax Info](#)

DOM = Days on Market, Occ. = Occupancy, FL = Floor Number