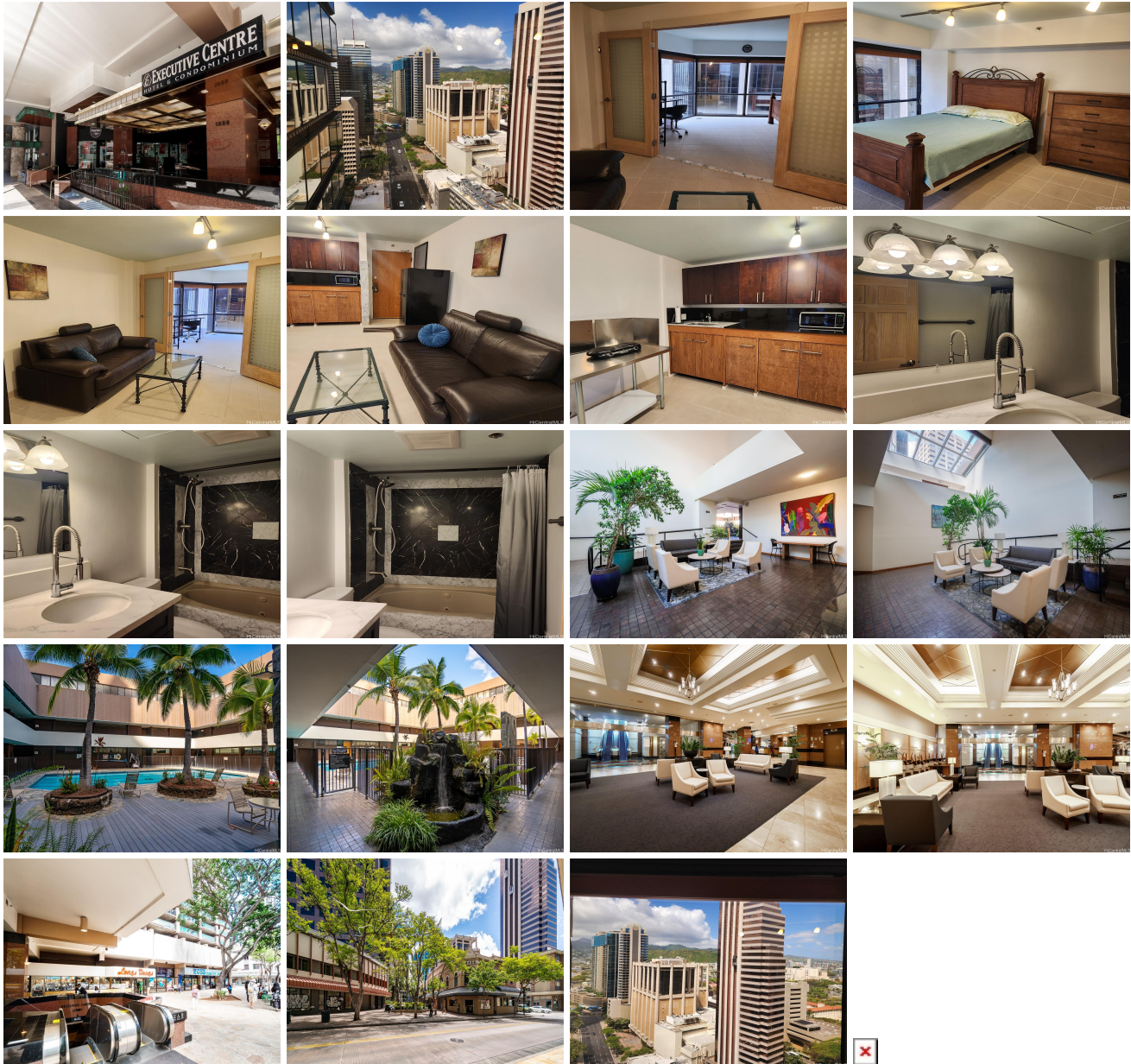


Executive Centre 1088 Bishop Street Unit 2909, Honolulu 96813 * \$350,000

Beds: 1	MLS#: 202414098, FS	Year Built: 1984
Bath: 1/0	Status: Active	Remodeled:
Living Sq. Ft.: 465	List Date & DOM: 06-12-2024 & 14	Total Parking: 1
Land Sq. Ft.: 58,370	Condition: Excellent	Assessed Value
Lanai Sq. Ft.: 0	Frontage: Other	Building: \$304,500
Sq. Ft. Other: 0	Tax/Year: \$90/2023	Land: \$28,400
Total Sq. Ft. 465	Neighborhood: Downtown	Total: \$332,900
Maint./Assoc. \$598 / \$0	Flood Zone : Zone X - Tool	Stories / CPR: 21+ / No
Parking: Assigned, Covered - 1	Frontage: Other	
Zoning : 34 - BMX-4 Central Business Mix	View: City, Mountain, Sunrise	

Public Remarks: This listing showcases a versatile 1 bedroom, 1 bath condominium in downtown Honolulu, complete with a parking stall and boasting views of Punchbowl and the cityscape. The unit features central air conditioning, access to a swimming pool, community laundry facilities, and the assurance of 24-hour security. Its prime location offers proximity to Ala Moana Shopping Center, Beach Park, Hawaii Pacific University, the financial district, as well as various schools, stores, and restaurants. The building's mixed-use designation provides the flexibility to reside, conduct business, or participate in a hotel rental program through Aqua Aston Hotel. The maintenance fee is detailed at \$597.55, with an additional \$192.98 for capital reserves, totaling \$790.53, which includes water, sewer, cable TV and upkeep of common areas. Interested parties should know that offers will be reviewed on June 24, 2024. Seller may accept offers before June 24, 2024. **Sale Conditions:** None
Schools: [Royal](#), [Keelikolani](#), [Mckinley](#) * [Request Showing](#), [Photos](#), [History](#), [Maps](#), [Deed](#), [Watch List](#), [Tax Info](#)



Address	Price	Bd & Bth	Living / Avg.	Land Avg.	DOM
---------	-------	----------	---------------	-------------	-----

1088 Bishop Street 2909	\$350,000	1 & 1/0	465 \$753	58,370 \$6	14
---	---------------------------	---------	-------------	--------------	----

Address	Tax Maint. Ass.	Assessed Land	Assessed Building	Assessed Total	Ratio	Year & Remodeled
1088 Bishop Street 2909	\$90 \$598 \$0	\$28,400	\$304,500	\$332,900	105%	1984 & NA

[1088 Bishop Street 2909](#) - MLS#: [202414098](#) - This listing showcases a versatile 1 bedroom, 1 bath condominium in downtown Honolulu, complete with a parking stall and boasting views of Punchbowl and the cityscape. The unit features central air conditioning, access to a swimming pool, community laundry facilities, and the assurance of 24-hour security. Its prime location offers proximity to Ala Moana Shopping Center, Beach Park, Hawaii Pacific University, the financial district, as well as various schools, stores, and restaurants. The building's mixed-use designation provides the flexibility to reside, conduct business, or participate in a hotel rental program through Aqua Aston Hotel. The maintenance fee is detailed at \$597.55, with an additional \$192.98 for capital reserves, totaling \$790.53, which includes water, sewer, cable TV and upkeep of common areas. Interested parties should know that offers will be reviewed on June 24, 2024. Seller may accept offers before June 24, 2024. **Region:** Metro **Neighborhood:** Downtown **Condition:** Excellent **Parking:** Assigned, Covered - 1 **Total Parking:** 1 **View:** City, Mountain, Sunrise **Frontage:** Other **Pool:** **Zoning:** 34 - BMX-4 Central Business Mix **Sale Conditions:** None **Schools:** [Royal](#), [Keelikolani](#), [Mckinley](#) * [Request Showing](#), [Photos](#), [History](#), [Maps](#), [Deed](#), [Watch List](#), [Tax Info](#)

DOM = Days on Market