

**Honolulu Park Place 1212 Nuuanu Avenue Unit 3003, Honolulu 96817 \* Honolulu Park Place \* \$674,900 \* Originally \$689,000**

Beds: <b>2</b>	MLS#: <b>202414113, FS</b>	Year Built: <b>1989</b>
Bath: <b>2/0</b>	Status: <b>Active</b>	Remodeled:
Living Sq. Ft.: <b>905</b>	List Date & DOM: <b>06-14-2024 &amp; 32</b>	Total Parking: <b>2</b>
Land Sq. Ft.: <b>0</b>	Condition: <b>Above Average</b>	<a href="#">Assessed Value</a>
Lanai Sq. Ft.: <b>113</b>	Frontage: <b>Other</b>	Building: <b>\$624,800</b>
Sq. Ft. Other: <b>0</b>	Tax/Year: <b>\$196/2024</b>	Land: <b>\$52,800</b>
Total Sq. Ft. <b>1,018</b>	Neighborhood: <b>Chinatown</b>	Total: <b>\$677,600</b>
Maint./Assoc. <b>\$1,160 / \$0</b>	<a href="#">Flood Zone</a> : <b>Zone X - Tool</b>	Stories / CPR: <b>21+ / No</b>

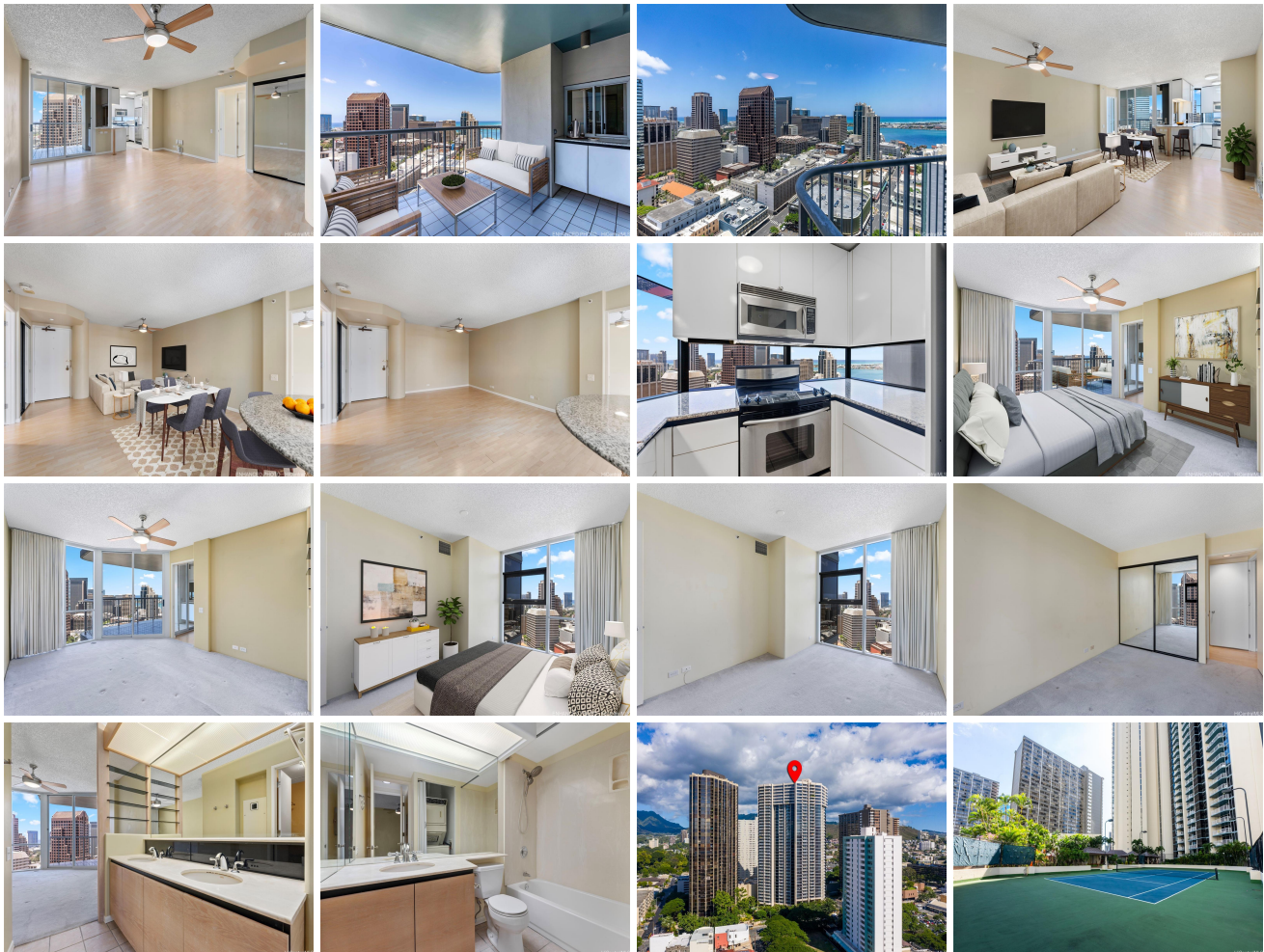
**Assigned, Covered - 2, Compact, Parking: Garage, Guest, Secured Entry, Street, Tandem**

Frontage: **Other**

[Zoning](#): **34 - BMX-4 Central Business Mix**

View: **City, Ocean**

**Public Remarks:** PRICE ADJUSTMENT! Ultimate Downtown Honolulu Convenience with all the amenities you could desire, TWO parking stalls and the building has SPRINKLERS! This 2 bedroom 2 bath and 2 parking (tandem) condo is centrally located and close to shopping, eateries, medical facilities and has quick access to the highway. With a welcoming waterfall at the front, once you arrive home you can head downstairs to roam by the KOI PONDS in the gardens, BBQ at the pagodas, lounge by the heated POOL, work out at the FITNESS CENTER or HIT SOME BALLS at the racquet ball, tennis/pickleball, basketball courts or GOLF cage and even do some BOWLING! Don't want to cook? Grab a bite at the cafe downstairs! So much to do on property you never need to leave after you come home. Oh, and sit on your lanai to witness the world go by and the boats cruise in and out of the harbor. A few photos have been virtually staged(enhanced). Cable TV, Hot Water, Internet Service, Sewer and Water are included in the monthly maintenance fees. **Sale Conditions:** None **Schools:** , , \* [Request Showing, Photos, History, Maps, Deed, Watch List, Tax Info](#)





Address	Price	Bd & Bth	Living / Avg.	Land   Avg.	Lanai	Occ.	FL	DOM
<a href="#">1212 Nuuanu Avenue 3003</a>	<b>\$674,900</b>	2 & 2/0	905   \$746	0   \$inf	113	59%	30	32

Address	Tax   Maint.   Ass.	Assessed Land	Assessed Building	Assessed Total	Ratio	Year & Remodeled
<a href="#">1212 Nuuanu Avenue 3003</a>	\$196   \$1,160   \$0	\$52,800	\$624,800	\$677,600	100%	1989 & NA

[1212 Nuuanu Avenue 3003](#) - MLS#: [202414113](#) - Original price was \$689,000 - PRICE ADJUSTMENT! Ultimate Downtown Honolulu Convenience with all the amenities you could desire, TWO parking stalls and the building has SPRINKLERS! This 2 bedroom 2 bath and 2 parking (tandem) condo is centrally located and close to shopping, eateries, medical facilities and has quick access to the highway. With a welcoming waterfall at the front, once you arrive home you can head downstairs to roam by the KOI PONDS in the gardens, BBQ at the pagodas, lounge by the heated POOL, work out at the FITNESS CENTER or HIT SOME BALLS at the racquet ball, tennis/pickleball, basketball courts or GOLF cage and even do some BOWLING! Don't want to cook? Grab a bite at the cafe downstairs! So much to do on property you never need to leave after you come home. Oh, and sit on your lanai to witness the world go by and the boats cruise in and out of the harbor. A few photos have been virtually staged(enhanced). Cable TV, Hot Water, Internet Service, Sewer and Water are included in the monthly maintenance fees. **Region:** Metro **Neighborhood:** Chinatown **Condition:** Above Average **Parking:** Assigned, Covered - 2, Compact, Garage, Guest, Secured Entry, Street, Tandem **Total Parking:** 2 **View:** City, Ocean **Frontage:** Other **Pool:** **Zoning:** 34 - BMX-4 Central Business Mix **Sale Conditions:** None **Schools:** , , \* [Request Showing](#), [Photos](#), [History](#), [Maps](#), [Deed](#), [Watch List](#), [Tax Info](#)

DOM = Days on Market, Occ. = Occupancy, FL = Floor Number