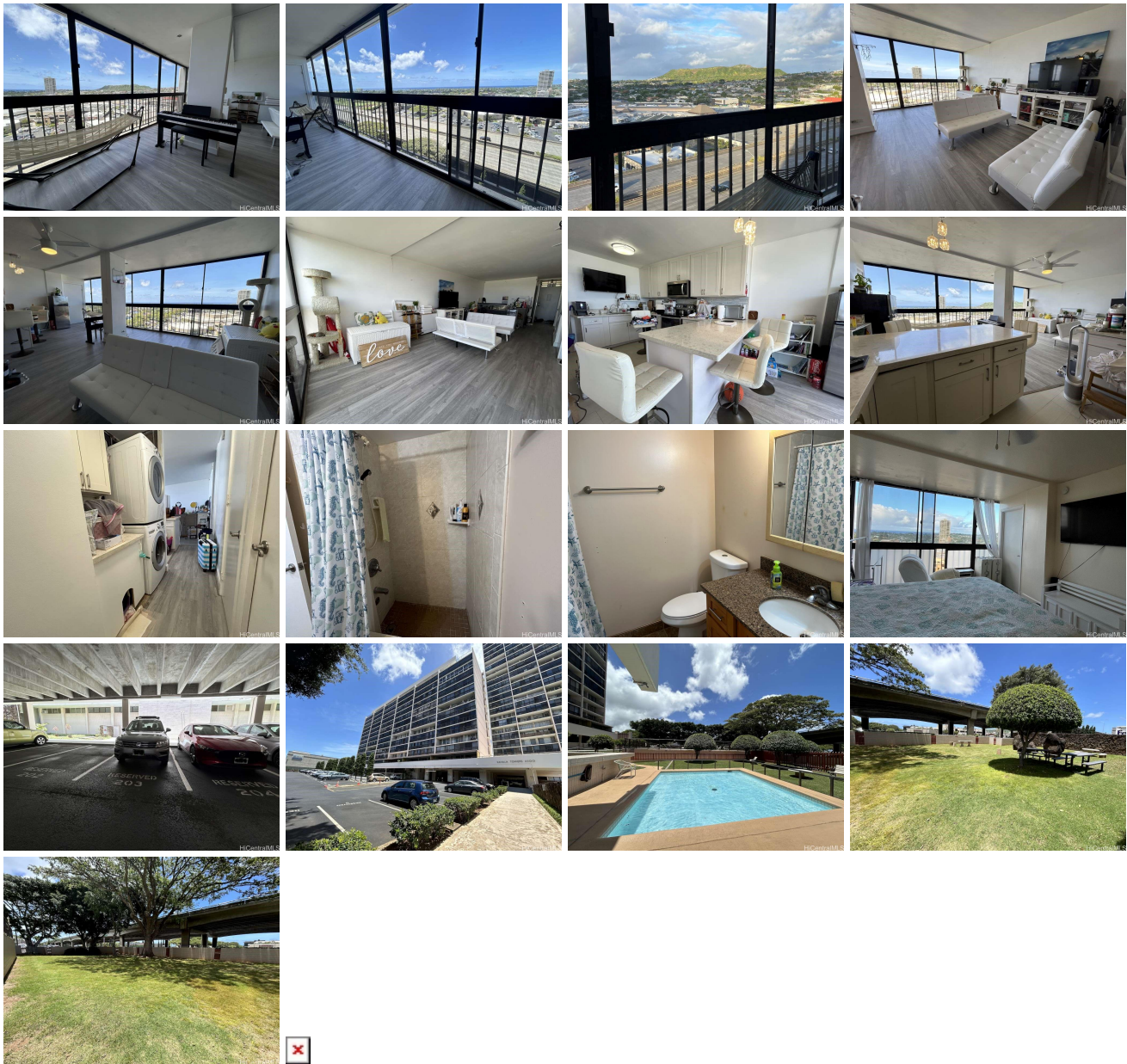


Kahala Towers 4300 Waialae Avenue Unit B1205, Honolulu 96816 * \$720,000

Bed: 3	MLS#: 202414119, FS	Year Built: 1968
Bath: 2/0	Status: Pending	Remodeled: 2018
Living Sq. Ft.: 1,368	List Date & DOM: 06-12-2024 & 3	Total Parking: 1
Land Sq. Ft.: 117,002	Condition: Average	Assessed Value
Lanai Sq. Ft.: 0	Frontage:	Building: \$578,300
Sq. Ft. Other: 0	Tax/Year: \$174/2024	Land: \$144,000
Total Sq. Ft. 1,368	Neighborhood: Waialae Nui Vly	Total: \$722,300
Maint./Assoc. \$1,095 / \$0	Flood Zone : Zone X - Tool	Stories / CPR: One / No
Parking: Assigned, Covered - 1	Frontage:	
Zoning : 11 - A-1 Low Density Apartment	View: Diamond Head, Ocean	

Public Remarks: KAHALA TOWERS: 3 Bedroom, 2 Bath, 1 assigned covered parking. Partly furnished with refrigerator, microwave hood, stove, washer, dryer and tankless water heater. Maintenance fee includes cable tv, water, and sewer. Approximately 1,368 sq ft living area. Nearby restaurants, banks, shopping mall, supermarkets and bus lines. **Sale Conditions:** None **Schools:** , , * [Request Showing](#), [Photos](#), [History](#), [Maps](#), [Deed](#), [Watch List](#), [Tax Info](#)



Address	Price	Bd & Bth	Living / Avg.	Land Avg.	DOM
4300 Waialae Avenue B1205	\$720,000	3 & 2/0	1,368 \$526	117,002 \$6	3

Address	Tax Maint. Ass.	Assessed Land	Assessed Building	Assessed Total	Ratio	Year & Remodeled
4300 Waiālae Avenue B1205	\$174 \$1,095 \$0	\$144,000	\$578,300	\$722,300	100%	1968 & 2018

[4300 Waiālae Avenue B1205](#) - MLS#: [202414119](#) - KAHALA TOWERS: 3 Bedroom, 2 Bath, 1 assigned covered parking. Partly furnished with refrigerator, microwave hood, stove, washer, dryer and tankless water heater. Maintenance fee includes cable tv, water, and sewer. Approximately 1,368 sq ft living area. Nearby restaurants, banks, shopping mall, supermarkets and bus lines. **Region:** Diamond Head **Neighborhood:** Waiālae Nui Vly **Condition:** Average **Parking:** Assigned, Covered - 1 **Total Parking:** 1 **View:** Diamond Head, Ocean **Frontage:** **Pool:** **Zoning:** 11 - A-1 Low Density Apartment **Sale Conditions:** None **Schools:** , , * [Request Showing](#), [Photos](#), [History](#), [Maps](#), [Deed](#), [Watch List](#), [Tax Info](#)

DOM = Days on Market