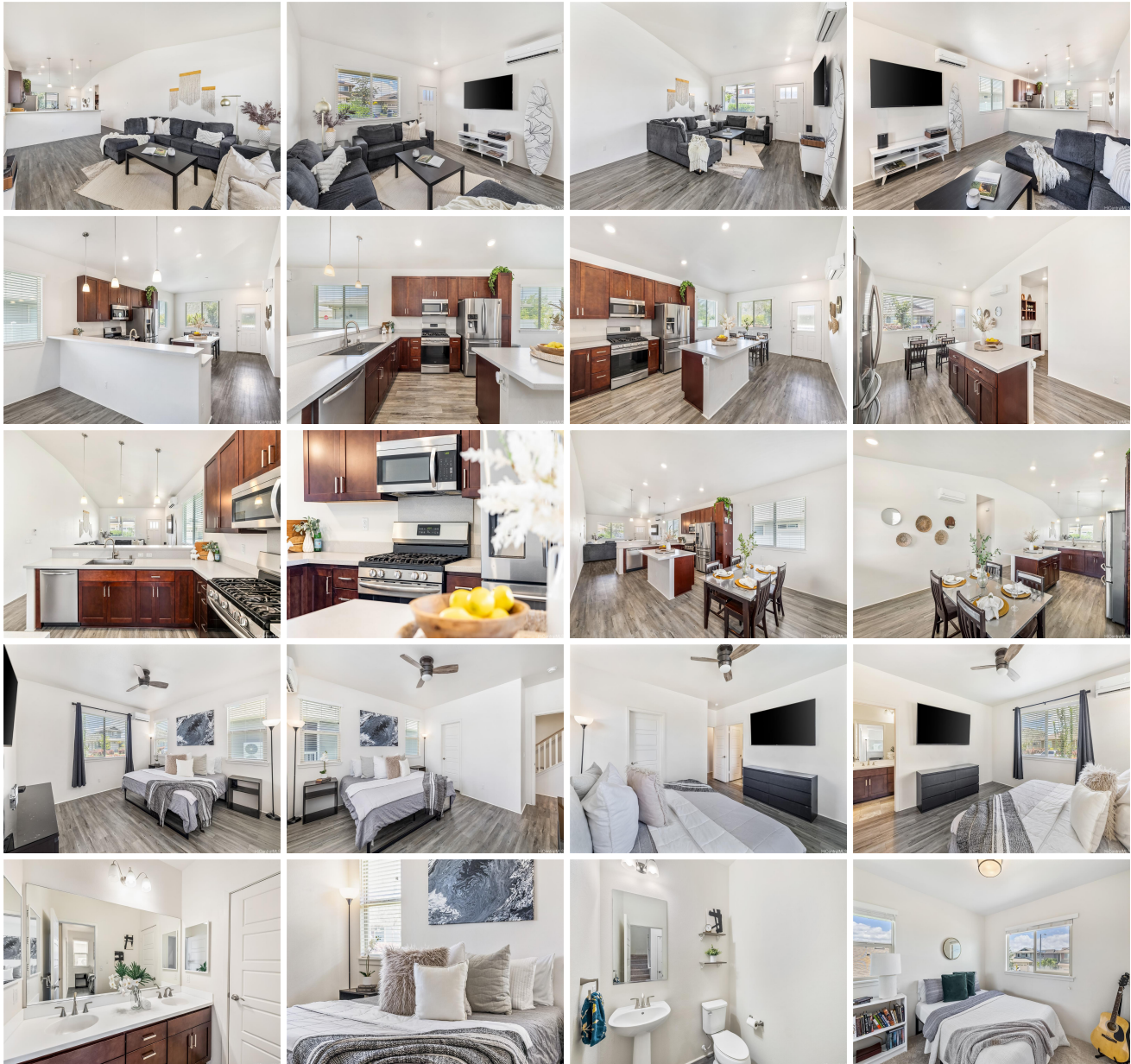


91-1038 Huaulaula Loop, Ewa Beach 96706 * * \$1,080,000

Beds: 4	MLS#: 202414137, FS	Year Built: 2018
Bath: 2/1	Status: Active	Remodeled:
Living Sq. Ft.: 1,777	List Date & DOM: 06-17-2024 & 13	Total Parking: 2
Land Sq. Ft.: 4,840	Condition: Excellent	Assessed Value
Lanai Sq. Ft.: 0	Frontage: Other	Building: \$370,500
Sq. Ft. Other: 0	Tax/Year: \$240/2023	Land: \$626,500
Total Sq. Ft. 1,777	Neighborhood: Hoopili-iliahi	Total: \$997,000
Maint./Assoc. \$0 / \$78	Flood Zone : Zone D - Tool	Stories / CPR: Two / No
Parking: 2 Car, Garage	Frontage: Other	
Zoning : 07 - R-3.5 Residential District	View: Other	

Public Remarks: Nestled in the coveted Ho'opili community. This spacious residence boasts 4 bedrooms and 2.5 bathrooms spread across 1,777 sqft of living space. As you step inside, you are greeted by vaulted ceilings that create an inviting sense of openness. The primary bedroom, conveniently located on the first floor, features an en suite bathroom and expansive windows that bathe the room in natural light. The well-appointed kitchen includes a large island, high-end appliances, and ample additional countertop and storage space, perfect for culinary enthusiasts. Upstairs, you'll find three additional bedrooms and a generously sized full bathroom. This meticulously maintained home exudes pride of ownership and is move-in ready, awaiting your personal touch. Located for optimal convenience, Ho'opili offers proximity to Kamakana Ali'i mall, Target, Costco, Chick-Fil-A, and Foodland farms. Access to H-1 ensures easy commuting to Waikale's premier outlets. Embrace the leisurely lifestyle with proximity to the West side's stunning beaches and a myriad of recreational opportunities. The perfect blend of comfort and convenience in this Ho'opili gem. VA Assumable loan w/ interest rate of 2.25%. **Sale Conditions:** None
Schools: , , * [Request Showing](#), [Photos](#), [History](#), [Maps](#), [Deed](#), [Watch List](#), [Tax Info](#)





Address	Price	Bd & Bth	Living / Avg.	Land Avg.	Lanai	Occ.	FL	DOM
91-1038 Huaulaula Loop	\$1,080,000	4 & 2/1	1,777 \$608	4,840 \$223	0	0%	0	13

Address	Tax Maint. Ass.	Assessed Land	Assessed Building	Assessed Total	Ratio	Year & Remodeled
91-1038 Huaulaula Loop	\$240 \$0 \$78	\$626,500	\$370,500	\$997,000	108%	2018 & NA

[91-1038 Huaulaula Loop](#) - MLS#: [202414137](#) - Nestled in the coveted Ho'opili community. This spacious residence boasts 4 bedrooms and 2.5 bathrooms spread across 1,777 sqft of living space. As you step inside, you are greeted by vaulted ceilings that create an inviting sense of openness. The primary bedroom, conveniently located on the first floor, features an en suite bathroom and expansive windows that bathe the room in natural light. The well-appointed kitchen includes a large island, high-end appliances, and ample additional countertop and storage space, perfect for culinary enthusiasts. Upstairs, you'll find three additional bedrooms and a generously sized full bathroom. This meticulously maintained home exudes pride of ownership and is move-in ready, awaiting your personal touch. Located for optimal convenience, Ho'opili offers proximity to Kamakana Ali'i mall, Target, Costco, Chick-Fil-A, and Foodland farms. Access to H-1 ensures easy commuting to Waikale's premier outlets. Embrace the leisurely lifestyle with proximity to the West side's stunning beaches and a myriad of recreational opportunities. The perfect blend of comfort and convenience in this Ho'opili gem. VA Assumable loan w/ interest rate of 2.25%. **Region:** Ewa Plain **Neighborhood:** Hoopili-iliahi **Condition:** Excellent **Parking:** 2 Car, Garage **Total Parking:** 2 **View:** Other **Frontage:** Other **Pool:** None **Zoning:** 07 - R-3.5 Residential District **Sale Conditions:** None **Schools:** , , * [Request Showing](#), [Photos](#), [History](#), [Maps](#), [Deed](#), [Watch List](#), [Tax Info](#)

DOM = Days on Market, Occ. = Occupancy, FL = Floor Number