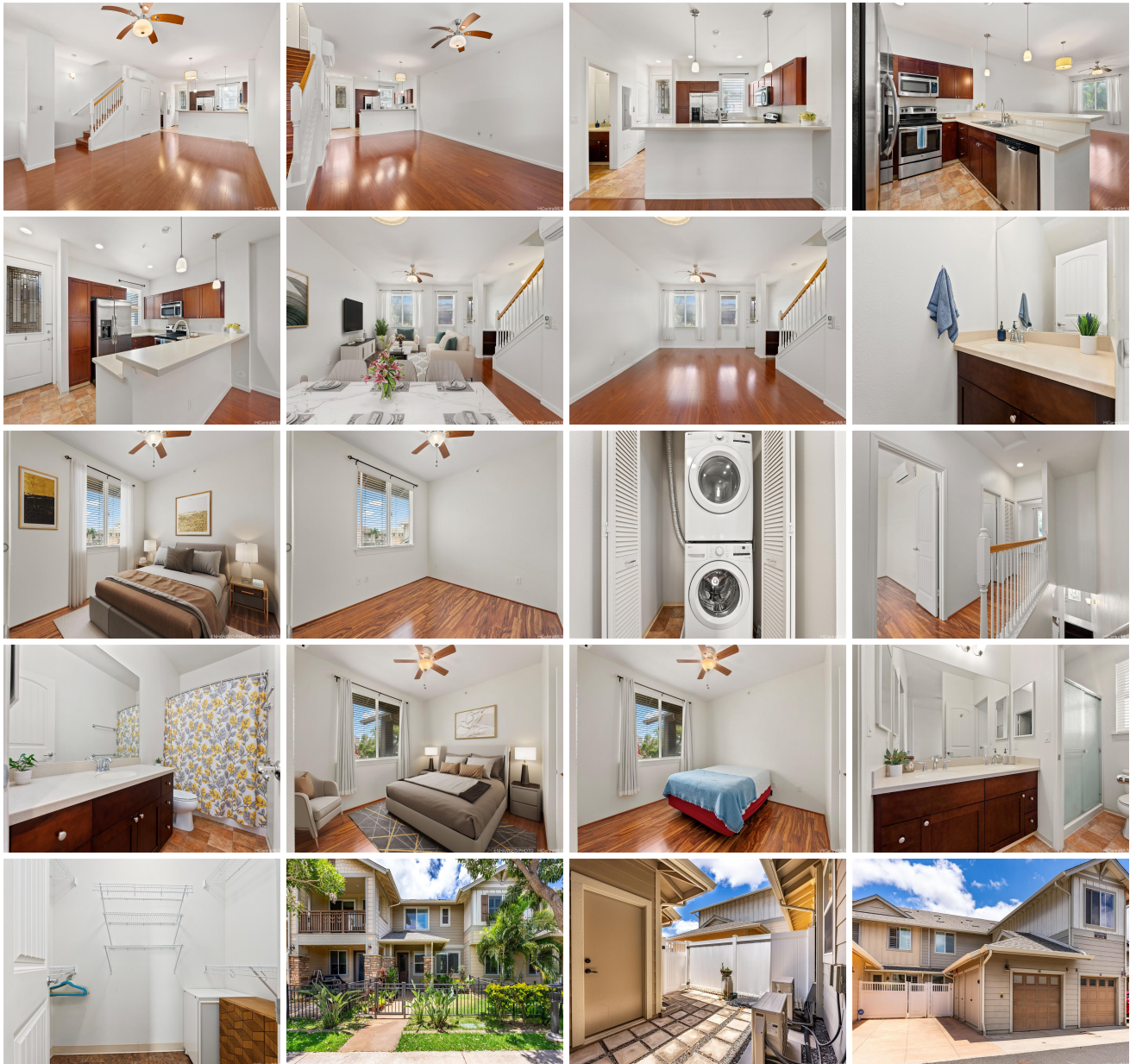


**Awakea 540 Manawai Street Unit 203, Kapolei 96707 \* Awakea \* \$735,000**

Beds: <b>2</b>	MLS#: <b>202414159, FS</b>	Year Built: <b>2013</b>
Bath: <b>2/1</b>	Status: <b>Active</b>	Remodeled:
Living Sq. Ft.: <b>1,087</b>	List Date & DOM: <b>06-27-2024 &amp; 3</b>	Total Parking: <b>3</b>
Land Sq. Ft.: <b>0</b>	Condition: <b>Above Average</b>	<a href="#">Assessed Value</a>
Lanai Sq. Ft.: <b>56</b>	Frontage:	Building: <b>\$445,200</b>
Sq. Ft. Other: <b>0</b>	Tax/Year: <b>\$174/2024</b>	Land: <b>\$229,600</b>
Total Sq. Ft. <b>1,143</b>	Neighborhood: <b>Kapolei-mehana-awakea</b>	Total: <b>\$674,800</b>
Maint./Assoc. <b>\$427 / \$59</b>	<a href="#">Flood Zone: Zone D - Tool</a>	Stories / CPR: <b>Two / No</b>
Parking: <b>Assigned, Garage, Open - 2</b>	Frontage:	
<a href="#">Zoning: 17 - AMX-2 Medium Density Apt M</a>	View: <b>None</b>	

**Public Remarks:** MOVE IN READY! Rare 2 bedroom, 2.5 bath townhome with 3 parking located in the highly desirable neighborhood of Awakea at Mehana! One car garage with two open parking stalls. This two story home features both front and back yard areas. Unit comes with stainless steel appliances in the kitchen, stacked washer and dryer plus split AC in the living room and bedrooms. Close to the MAC center and contently located nearby playgrounds, schools, shopping centers and more! A few photos have been virtually staged(enhanced). **Sale Conditions:** None **Schools:** , , \* [Request Showing](#), [Photos](#), [History](#), [Maps](#), [Deed](#), [Watch List](#), [Tax Info](#)





Address	Price	Bd & Bth	Living / Avg.	Land   Avg.	Lanai	Occ.	FL	DOM
<a href="#">540 Manawai Street 203</a>	<a href="#">\$735,000</a>	2 & 2/1	1,087   \$676	0   \$inf	56	71%	1	3

Address	Tax   Maint.   Ass.	Assessed Land	Assessed Building	Assessed Total	Ratio	Year & Remodeled
<a href="#">540 Manawai Street 203</a>	\$174   \$427   \$59	\$229,600	\$445,200	\$674,800	109%	2013 & NA

[540 Manawai Street 203](#) - MLS#: [202414159](#) - MOVE IN READY! Rare 2 bedroom, 2.5 bath townhome with 3 parking located in the highly desirable neighborhood of Awakea at Mehana! One car garage with two open parking stalls. This two story home features both front and back yard areas. Unit comes with stainless steel appliances in the kitchen, stacked washer and dryer plus split AC in the living room and bedrooms. Close to the MAC center and contently located nearby playgrounds, schools, shopping centers and more! A few photos have been virtually staged(enhanced). **Region:** Ewa Plain  
**Neighborhood:** Kapolei-mehana-awakea **Condition:** Above Average **Parking:** Assigned, Garage, Open - 2 **Total Parking:** 3 **View:** None **Frontage:** **Pool:** **Zoning:** 17 - AMX-2 Medium Density Apt M **Sale Conditions:** None **Schools:** , , \* [Request Showing](#), [Photos](#), [History](#), [Maps](#), [Deed](#), [Watch List](#), [Tax Info](#)

DOM = Days on Market, Occ. = Occupancy, FL = Floor Number