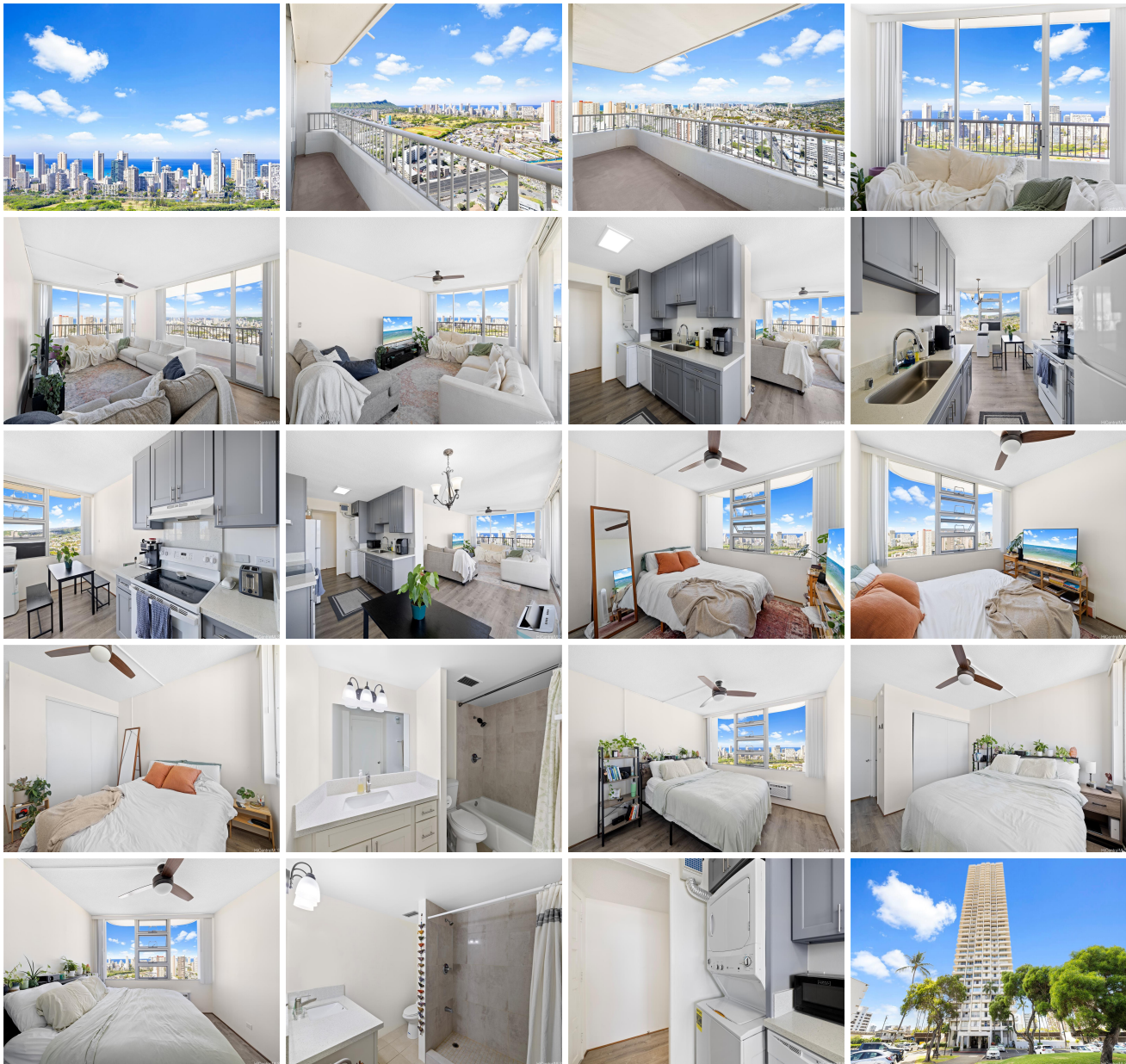


**Contessa 2825 South King Street Unit 3602, Honolulu 96826 \* Contessa \* \$625,000**

Beds: <b>2</b>	MLS#: <b>202414193, FS</b>	Year Built: <b>1971</b>
Bath: <b>2/0</b>	Status: <b>Active Under Contract</b>	Remodeled: <b>2020</b>
Living Sq. Ft.: <b>1,007</b>	List Date & DOM: <b>06-13-2024 &amp; 25</b>	Total Parking: <b>2</b>
Land Sq. Ft.: <b>0</b>	Condition: <b>Above Average</b>	<a href="#">Assessed Value</a>
Lanai Sq. Ft.: <b>147</b>	Frontage:	Building: <b>\$484,900</b>
Sq. Ft. Other: <b>0</b>	Tax/Year: <b>\$178/2024</b>	Land: <b>\$115,200</b>
Total Sq. Ft. <b>1,154</b>	Neighborhood: <b>Moiliili</b>	Total: <b>\$600,100</b>
Maint./Assoc. <b>\$1,046 / \$0</b>	<a href="#">Flood Zone</a> : <b>Zone X - Tool</b>	Stories / CPR: <b>21+ / No</b>
Parking: <b>Assigned, Guest</b>	Frontage:	
<a href="#">Zoning</a> : <b>12 - A-2 Medium Density Apartme</b>	View: <b>City, Diamond Head, Ocean</b>	

**Public Remarks:** Panoramic views of Diamond Head, the ocean, and Honolulu City Lights from this corner residence at the Contessa, perched on the 36th floor. This spacious 2-bedroom, 2-bath unit has a generously sized wrap around lanai of over 140 square feet, perfect for relaxing or entertaining guests. Enjoy a sense of privacy with only four units per floor. Features updated kitchen cabinets, quartz counter tops, luxury vinyl flooring, and the convenience of a washer and dryer. This secured building comes with two parking stalls and offers access to premium amenities which include a pool and sauna. **Sale Conditions:** None **Schools:** [Kuhio](#), [Washington](#), [Kaimuki](#) \* [Request Showing](#), [Photos](#), [History](#), [Maps](#), [Deed](#), [Watch List](#), [Tax Info](#)





Address	Price	Bd & Bth	Living / Avg.	Land   Avg.	Lanai	Occ.	FL	DOM
<a href="#">2825 South King Street 3602</a>	<a href="#">\$625,000</a>	2 & 2/0	1,007   \$621	0   \$inf	147	65%	36	25

Address	Tax   Maint.   Ass.	Assessed Land	Assessed Building	Assessed Total	Ratio	Year & Remodeled
<a href="#">2825 South King Street 3602</a>	\$178   \$1,046   \$0	\$115,200	\$484,900	\$600,100	104%	1971 & 2020

[2825 South King Street 3602](#) - MLS#: [202414193](#) - Panoramic views of Diamond Head, the ocean, and Honolulu City Lights from this corner residence at the Contessa, perched on the 36th floor. This spacious 2-bedroom, 2-bath unit has a generously sized wrap around lanai of over 140 square feet, perfect for relaxing or entertaining guests. Enjoy a sense of privacy with only four units per floor. Features updated kitchen cabinets, quartz counter tops, luxury vinyl flooring, and the convenience of a washer and dryer. This secured building comes with two parking stalls and offers access to premium amenities which include a pool and sauna. **Region:** Metro **Neighborhood:** Moiliili **Condition:** Above Average **Parking:** Assigned, Guest **Total Parking:** 2 **View:** City, Diamond Head, Ocean **Frontage:** **Pool:** **Zoning:** 12 - A-2 Medium Density Apartme **Sale Conditions:** None **Schools:** [Kuhio](#), [Washington](#), [Kaimuki](#) \* [Request Showing](#), [Photos](#), [History](#), [Maps](#), [Deed](#), [Watch List](#), [Tax Info](#)

DOM = Days on Market, Occ. = Occupancy, FL = Floor Number