

Ala Wai East 2547 Ala Wai Boulevard Unit 201, Honolulu 96815 * Ala Wai East * \$599,000

Beds: 2

MLS#: [202414214](#), FS

Year Built: 1969

Bath: 2/0

Status: **Active Under Contract**

Remodeled: 2022

Living Sq. Ft.: 980

List Date & DOM: **06-13-2024 & 31**

Total Parking: 1

Land Sq. Ft.: 6,534

Condition: **Excellent**

[Assessed Value](#)

Lanai Sq. Ft.: 0

Frontage: **Other**

Building: **\$422,700**

Sq. Ft. Other: 0

Tax/Year: **\$68/2024**

Land: **\$119,900**

Total Sq. Ft. 980

Neighborhood: **Waikiki**

Total: **\$542,600**

Maint./Assoc. **\$888 / \$0**

[Flood Zone](#): **Zone AE - Tool**

Stories / CPR: **4-7 / No**

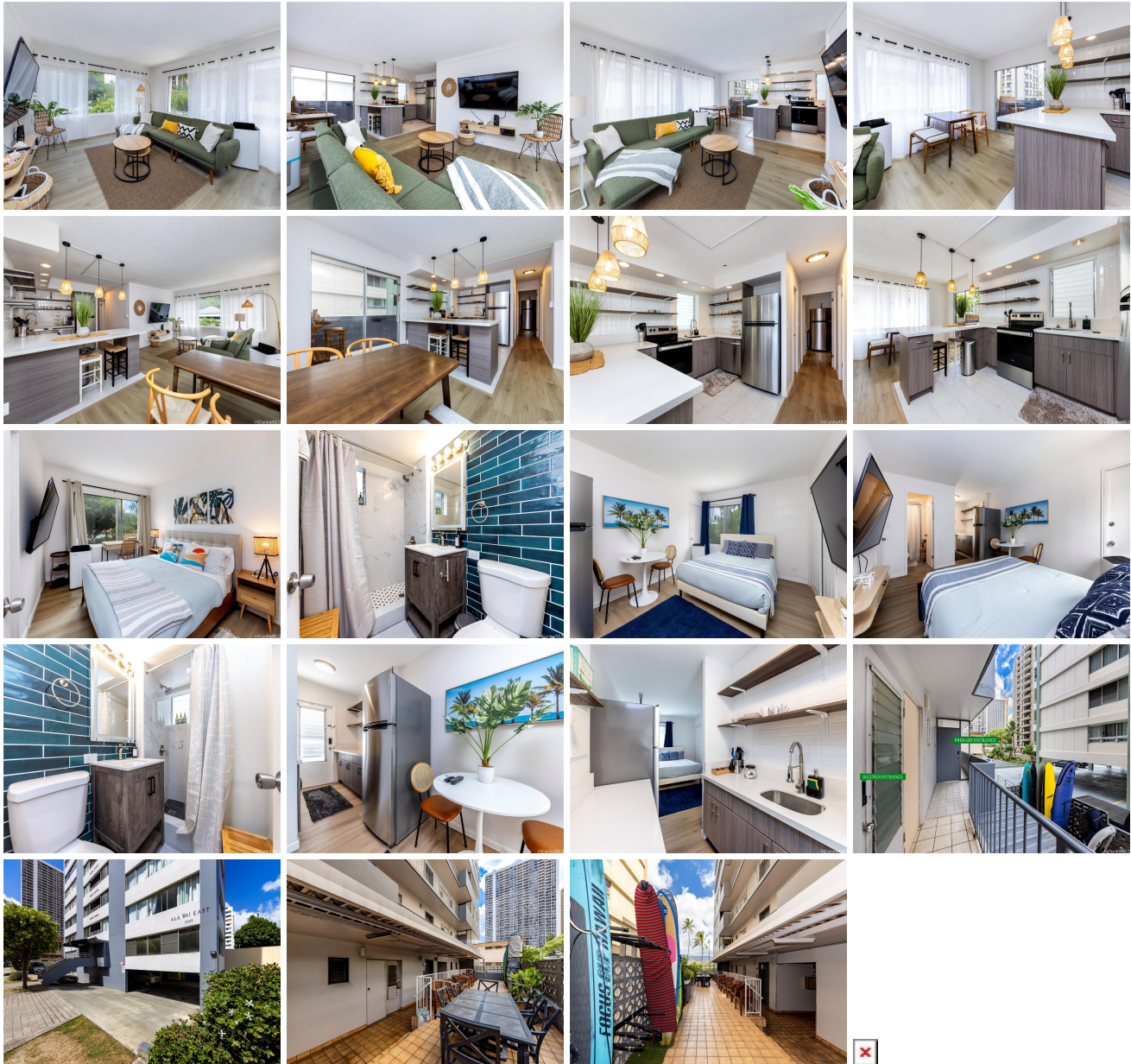
Parking: **Covered - 1**

Frontage: **Other**

[Zoning](#): **X2 - Apartment Precinct**

View: **Golf Course, Marina/Canal, Mountain, Sunrise**

Public Remarks: Find your sanctuary in the heart of Waikiki at Ala Wai East, a quiet condominium destination offering the ultimate in privacy with only two units per floor. This beautifully upgraded, turn-key unit has been thoughtfully and meticulously upgraded with new flooring, cabinets, counter-tops, renovated kitchen, bathrooms, lighting, built-ins, and much more. With two separate entrances, this opportunity presents flexible living arrangements - a spacious 1 bedroom, 1 bath main unit with a full kitchen seamlessly pairs with a separate studio unit featuring a kitchenette and its own entrance. In total, this 2 bedroom, 2 bath home can be enjoyed as a single residence, or perfect for those seeking a flexible living arrangement. Superb location just blocks from all-things Waikiki; dining, shopping, entertainment, sandy shorelines and world-renowned beaches, watersports and more. **Sale Conditions:** None **Schools:** [Jefferson](#), [Washington](#), [Kaimuki](#) * [Request Showing](#), [Photos](#), [History](#), [Maps](#), [Deed](#), [Watch List](#), [Tax Info](#)



Address	Price	Bd & Bth	Living / Avg.	Land Avg.	Lanai	Occ.	FL	DOM
2547 Ala Wai Boulevard 201	\$599,000	2 & 2/0	980 \$611	6,534 \$92	0	63%	2	31

Address	Tax Maint. Ass.	Assessed Land	Assessed Building	Assessed Total	Ratio	Year & Remodeled
2547 Ala Wai Boulevard 201	\$68 \$888 \$0	\$119,900	\$422,700	\$542,600	110%	1969 & 2022

[2547 Ala Wai Boulevard 201](#) - MLS#: [202414214](#) - Find your sanctuary in the heart of Waikiki at Ala Wai East, a quiet condominium destination offering the ultimate in privacy with only two units per floor. This beautifully upgraded, turn-key unit has been thoughtfully and meticulously upgraded with new flooring, cabinets, counter-tops, renovated kitchen, bathrooms, lighting, built-ins, and much more. With two separate entrances, this opportunity presents flexible living arrangements - a spacious 1 bedroom, 1 bath main unit with a full kitchen seamlessly pairs with a separate studio unit featuring a kitchenette and its own entrance. In total, this 2 bedroom, 2 bath home can be enjoyed as a single residence, or perfect for those seeking a flexible living arrangement. Superb location just blocks from all-things Waikiki; dining, shopping, entertainment, sandy shorelines and world-renowned beaches, watersports and more. **Region:** Metro **Neighborhood:** Waikiki **Condition:** Excellent **Parking:** Covered - 1 **Total Parking:** 1 **View:** Golf Course, Marina/Canal, Mountain, Sunrise **Frontage:** Other **Pool:** **Zoning:** X2 - Apartment Precinct **Sale Conditions:** None **Schools:** [Jefferson](#), [Washington](#), [Kaimuki](#) * [Request Showing](#), [Photos](#), [History](#), [Maps](#), [Deed](#), [Watch List](#), [Tax Info](#)

DOM = Days on Market, Occ. = Occupancy, FL = Floor Number