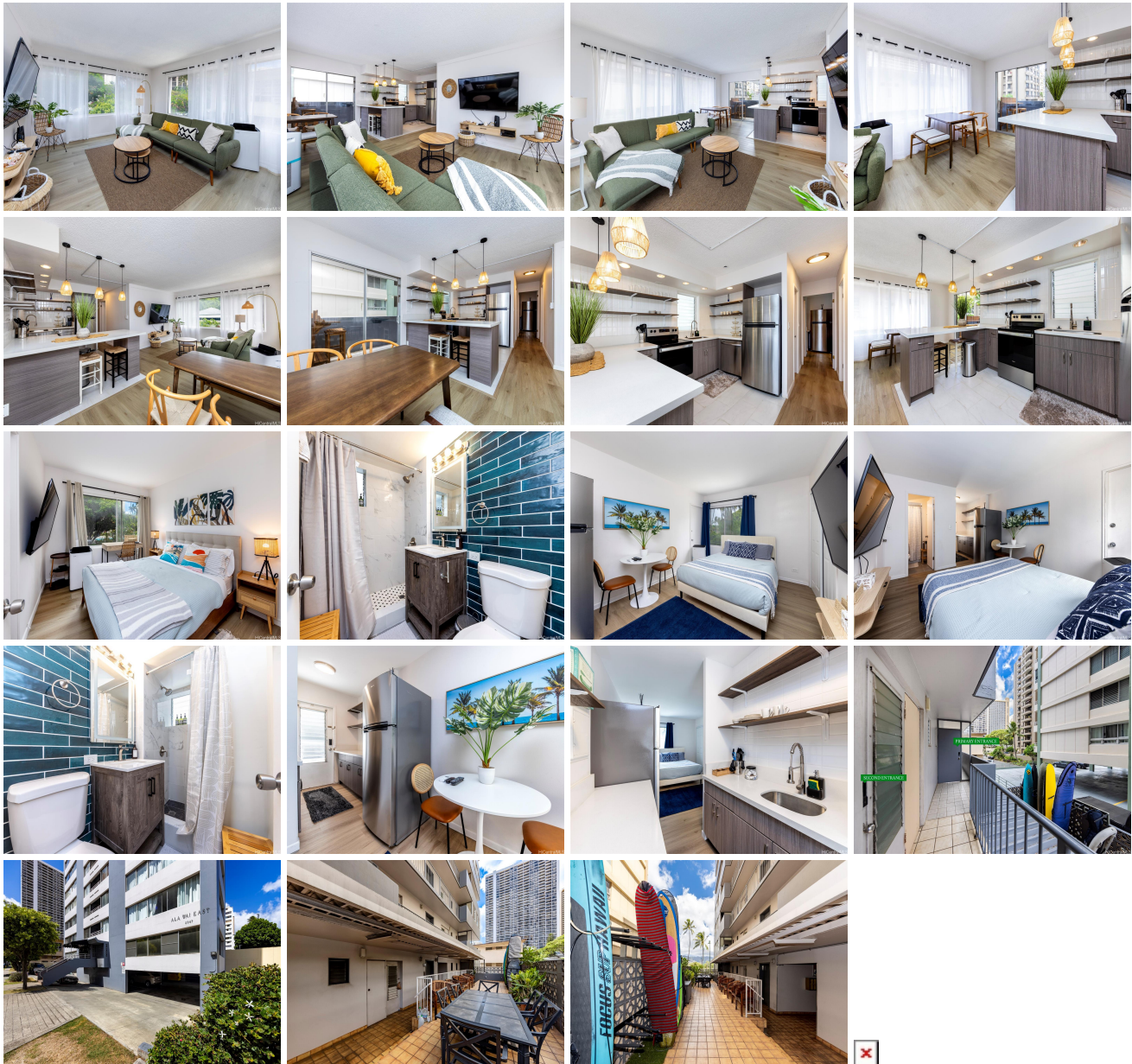


# **Ala Wai East 2547 Ala Wai Boulevard Unit 201, Honolulu 96815 \* \$599,000**

Beds: <b>2</b>	MLS#: <b>202414214, FS</b>	Year Built: <b>1969</b>
Bath: <b>2/0</b>	Status: <b>Active</b>	Remodeled: <b>2022</b>
Living Sq. Ft.: <b>980</b>	List Date & DOM: <b>06-13-2024 &amp; 15</b>	Total Parking: <b>1</b>
Land Sq. Ft.: <b>6,534</b>	Condition: <b>Excellent</b>	<a href="#">Assessed Value</a>
Lanai Sq. Ft.: <b>0</b>	Frontage: <b>Other</b>	Building: <b>\$422,700</b>
Sq. Ft. Other: <b>0</b>	Tax/Year: <b>\$68/2024</b>	Land: <b>\$119,900</b>
Total Sq. Ft. <b>980</b>	Neighborhood: <b>Waikiki</b>	Total: <b>\$542,600</b>
Maint./Assoc. <b>\$888 / \$0</b>	<a href="#">Flood Zone</a> : <b>Zone AE - Tool</b>	Stories / CPR: <b>4-7 / No</b>
Parking: <b>Covered - 1</b>	Frontage: <b>Other</b>	
<a href="#">Zoning</a> : <b>X2 - Apartment Precinct</b>	View: <b>Golf Course, Marina/Canal, Mountain, Sunrise</b>	

**Public Remarks:** Find your sanctuary in the heart of Waikiki at Ala Wai East, a quiet condominium destination offering the ultimate in privacy with only two units per floor. This beautifully upgraded, turn-key unit has been thoughtfully and meticulously upgraded with new flooring, cabinets, counter-tops, renovated kitchen, bathrooms, lighting, built-ins, and much more. With two separate entrances, this opportunity presents flexible living arrangements - a spacious 1 bedroom, 1 bath main unit with a full kitchen seamlessly pairs with a separate studio unit featuring a kitchenette and its own entrance. In total, this 2 bedroom, 2 bath home can be enjoyed as a single residence, or perfect for those seeking a flexible living arrangement. Superb location just blocks from all-things Waikiki; dining, shopping, entertainment, sandy shorelines and world-renowned beaches, watersports and more. **Sale Conditions:** None **Schools:** [Jefferson](#), [Washington](#), [Kaimuki](#) \* [Request Showing](#), [Photos](#), [History](#), [Maps](#), [Deed](#), [Watch List](#), [Tax Info](#)



Address	Price	Bd & Bth	Living / Avg.	Land   Avg.	DOM
<a href="#">2547 Ala Wai Boulevard 201</a>	<a href="#">\$599,000</a>	2 & 2/0	980   \$611	6,534   \$92	15

Address	Tax   Maint.   Ass.	Assessed Land	Assessed Building	Assessed Total	Ratio	Year & Remodeled
<a href="#">2547 Ala Wai Boulevard 201</a>	\$68   \$888   \$0	\$119,900	\$422,700	\$542,600	110%	1969 & 2022

[2547 Ala Wai Boulevard 201](#) - MLS#: [202414214](#) - Find your sanctuary in the heart of Waikiki at Ala Wai East, a quiet condominium destination offering the ultimate in privacy with only two units per floor. This beautifully upgraded, turn-key unit has been thoughtfully and meticulously upgraded with new flooring, cabinets, counter-tops, renovated kitchen, bathrooms, lighting, built-ins, and much more. With two separate entrances, this opportunity presents flexible living arrangements - a spacious 1 bedroom, 1 bath main unit with a full kitchen seamlessly pairs with a separate studio unit featuring a kitchenette and its own entrance. In total, this 2 bedroom, 2 bath home can be enjoyed as a single residence, or perfect for those seeking a flexible living arrangement. Superb location just blocks from all-things Waikiki; dining, shopping, entertainment, sandy shorelines and world-renowned beaches, watersports and more. **Region:** Metro **Neighborhood:** Waikiki **Condition:** Excellent **Parking:** Covered - 1 **Total Parking:** 1 **View:** Golf Course, Marina/Canal, Mountain, Sunrise **Frontage:** Other **Pool:** **Zoning:** X2 - Apartment Precinct **Sale Conditions:** None **Schools:** [Jefferson](#), [Washington](#), [Kaimuki](#) \* [Request Showing](#), [Photos](#), [History](#), [Maps](#), [Deed](#), [Watch List](#), [Tax Info](#)

DOM = Days on Market