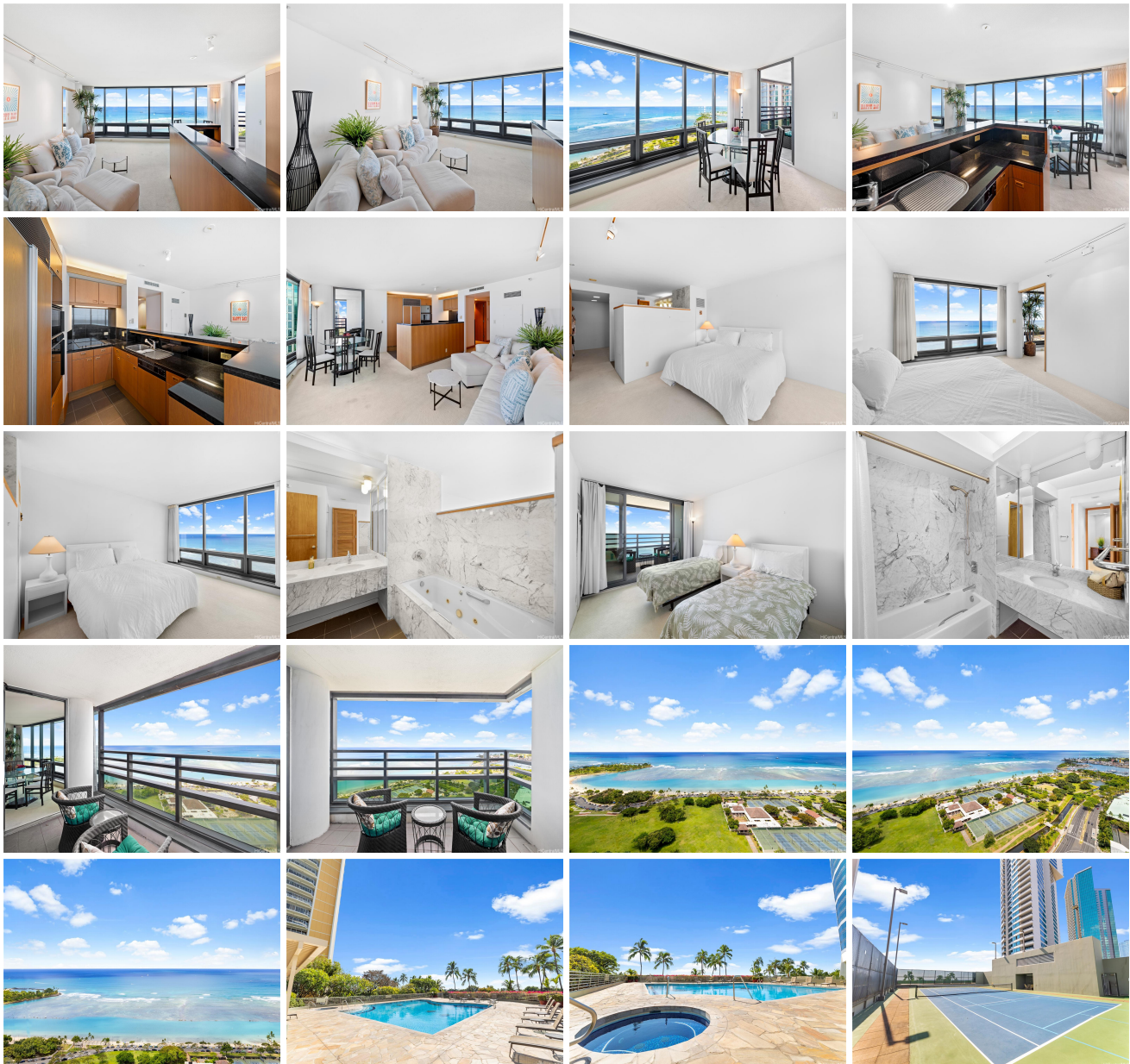


Nauru Tower 1330 Ala Moana Boulevard Unit 3203, Honolulu 96814 * Nauru Tower *

\$1,300,000

Beds: 2	MLS#: 202414216, FS	Year Built: 1990
Bath: 2/0	Status: Active	Remodeled:
Living Sq. Ft.: 1,220	List Date & DOM: 06-17-2024 & 13	Total Parking: 2
Land Sq. Ft.: 135,472	Condition: Above Average	Assessed Value
Lanai Sq. Ft.: 92	Frontage: Other	Building: \$1,260,900
Sq. Ft. Other: 0	Tax/Year: \$669/2023	Land: \$92,300
Total Sq. Ft. 1,312	Neighborhood: Kakaako	Total: \$1,353,200
Maint./Assoc. \$1,822 / \$0	Flood Zone : Zone AE - Tool	Stories / CPR: 21+ / No
Parking: Assigned, Covered - 2, Tandem	Frontage: Other	
Zoning : Kak - Kakaako Community Development Project	View: Ocean	

Public Remarks: Very desirable high floor unit with fabulous ocean view! Enjoy the parallel, unobstructed, breathtaking view as you enter. Ocean and park view from each room. The spacious room has an ideal layout with privacy, with the living room and kitchen in the center and the primary bedroom and 2nd bedroom on either side. The building offers 24 hr security , ample guest parking, storage, tennis court, pool, etc. Located just across from Ala Moana beach park and only a few blocks to dining, shopping, and entertainment spots. **Sale Conditions:** None **Schools:** , , * [Request Showing](#), [Photos](#), [History](#), [Maps](#), [Deed](#), [Watch List](#), [Tax Info](#)





Address	Price	Bd & Bth	Living / Avg.	Land Avg.	Lanai	Occ.	FL	DOM
1330 Ala Moana Boulevard 3203	\$1,300,000	2 & 2/0	1,220 \$1,066	135,472 \$10	92	37%	32	13

Address	Tax Maint. Ass.	Assessed Land	Assessed Building	Assessed Total	Ratio	Year & Remodeled
1330 Ala Moana Boulevard 3203	\$669 \$1,822 \$0	\$92,300	\$1,260,900	\$1,353,200	96%	1990 & NA

[1330 Ala Moana Boulevard 3203](#) - MLS#: [202414216](#) - Very desirable high floor unit with fabulous ocean view! Enjoy the parallel, unobstructed, breathtaking view as you enter. Ocean and park view from each room. The spacious room has an ideal layout with privacy, with the living room and kitchen in the center and the primary bedroom and 2nd bedroom on either side. The building offers 24 hr security , ample guest parking, storage, tennis court, pool, etc. Located just across from Ala Moana beach park and only a few blocks to dining, shopping, and entertainment spots. **Region:** Metro **Neighborhood:** Kakaako **Condition:** Above Average **Parking:** Assigned, Covered - 2, Tandem **Total Parking:** 2 **View:** Ocean **Frontage:** Other **Pool:** **Zoning:** Kak - Kakaako Community Development Project **Sale Conditions:** None **Schools:** , , * [Request Showing](#), [Photos](#), [History](#), [Maps](#), [Deed](#), [Watch List](#), [Tax Info](#)

DOM = Days on Market, Occ. = Occupancy, FL = Floor Number