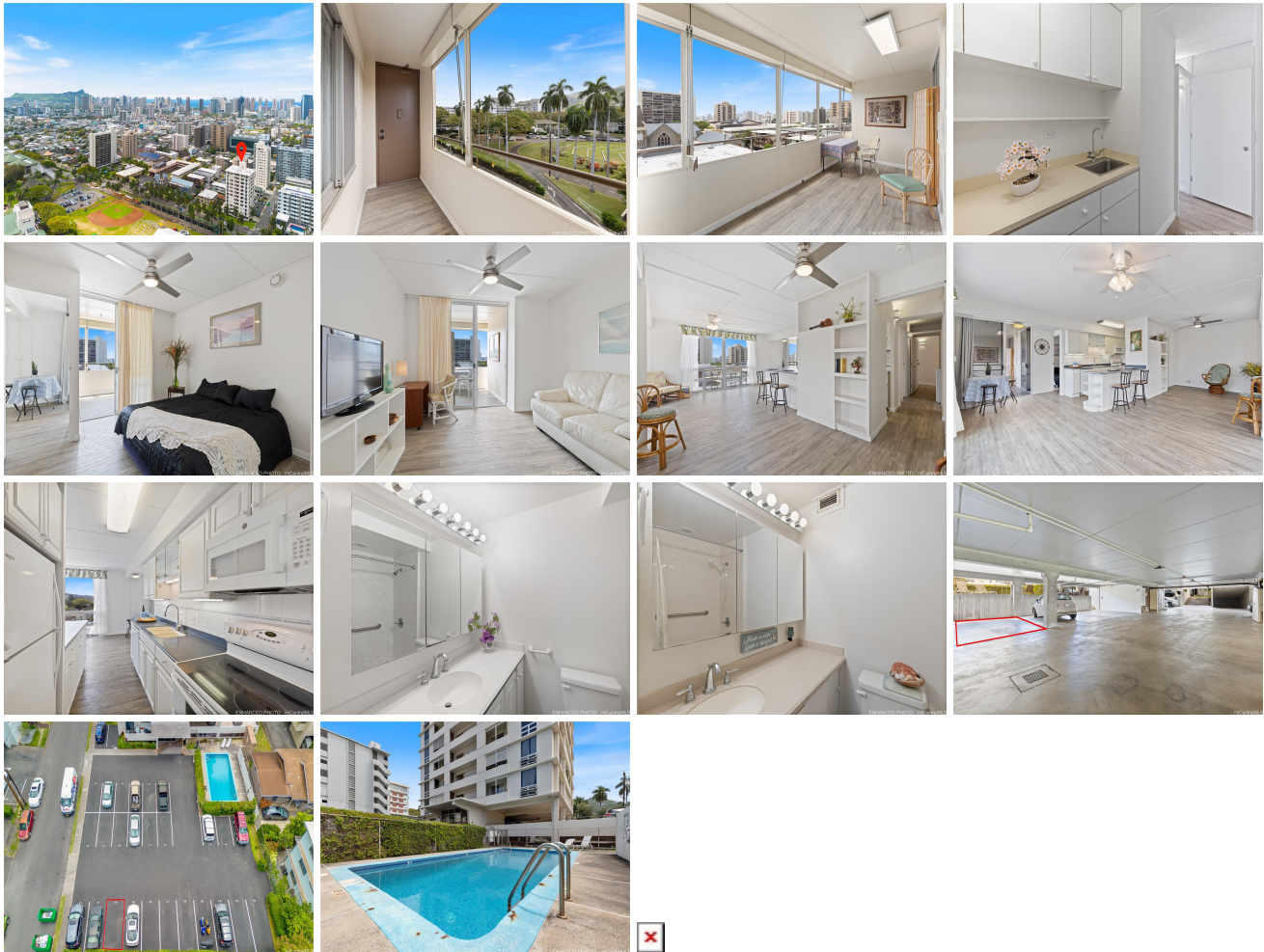


**Manoalani 1629 Wilder Avenue Unit 504, Honolulu 96822 \* Manoalani \* \$729,000**

Beds: <b>3</b>	MLS#: <b>202414278, FS</b>	Year Built: <b>1967</b>
Bath: <b>2/0</b>	Status: <b>Active</b>	Remodeled:
Living Sq. Ft.: <b>1,041</b>	List Date & DOM: <b>06-14-2024 &amp; 13</b>	Total Parking: <b>2</b>
Land Sq. Ft.: <b>22,477</b>	Condition: <b>Above Average</b>	<a href="#">Assessed Value</a>
Lanai Sq. Ft.: <b>180</b>	Frontage:	Building: <b>\$434,400</b>
Sq. Ft. Other: <b>0</b>	Tax/Year: <b>\$137/2023</b>	Land: <b>\$176,900</b>
Total Sq. Ft. <b>1,221</b>	Neighborhood: <b>Punahou</b>	Total: <b>\$611,300</b>
Maint./Assoc. <b>\$1,098 / \$0</b>	<a href="#">Flood Zone</a> : <b>Zone X - Tool</b>	Stories / CPR: <b>8-14 / No</b>
Parking: <b>Assigned, Covered - 1, Open - 1</b>	Frontage:	
<a href="#">Zoning</a> : <b>13 - A-3 High Density Apartment</b>	View: <b>City, Mountain</b>	

**Public Remarks:** Welcome to the rarely available Manoalani. Great location within minutes of Punahou and Maryknoll schools. Enjoy the mountain views this unit has to offer. This is a 3 bed 2 bath with 2 assigned parking stalls with two separate private lanais. Pet friendly building(verify). Salt water pool for you to enjoy. There is a washer/dryer in the unit along with a storage closet in the hallway. Sold as is. Don't miss out on this opportunity to own this beautiful piece of paradise. **Sale Conditions:** None **Schools:** , , \* [Request Showing](#), [Photos](#), [History](#), [Maps](#), [Deed](#), [Watch List](#), [Tax Info](#)



Address	Price	Bd & Bth	Living / Avg.	Land   Avg.	Lanai	Occ.	FL	DOM
<a href="#">1629 Wilder Avenue 504</a>	<b>\$729,000</b>	3 & 2/0	1,041   \$700	22,477   \$32	180	59%	5	13

Address	Tax   Maint.   Ass.	Assessed Land	Assessed Building	Assessed Total	Ratio	Year & Remodeled
<a href="#">1629 Wilder Avenue 504</a>	\$137   \$1,098   \$0	\$176,900	\$434,400	\$611,300	119%	1967 & NA

**1629 Wilder Avenue 504** - MLS#: **202414278** - Welcome to the rarely available Manoalani. Great location within minutes of Punahou and Maryknoll schools. Enjoy the mountain views this unit has to offer. This is a 3 bed 2 bath with 2 assigned parking stalls with two separate private lanais. Pet friendly building(verify). Salt water pool for you to enjoy. There is a washer/dryer in the unit along with a storage closet in the hallway. Sold as is. Don't miss out on this opportunity to own this beautiful piece of paradise. **Region:** Metro **Neighborhood:** Punahou **Condition:** Above Average **Parking:** Assigned, Covered - 1, Open - 1 **Total Parking:** 2 **View:** City, Mountain **Frontage:** Pool: **Zoning:** 13 - A-3 High Density Apartment **Sale Conditions:** None **Schools:** , , \* [Request Showing](#), [Photos](#), [History](#), [Maps](#), [Deed](#), [Watch List](#), [Tax Info](#)

DOM = Days on Market, Occ. = Occupancy, FL = Floor Number