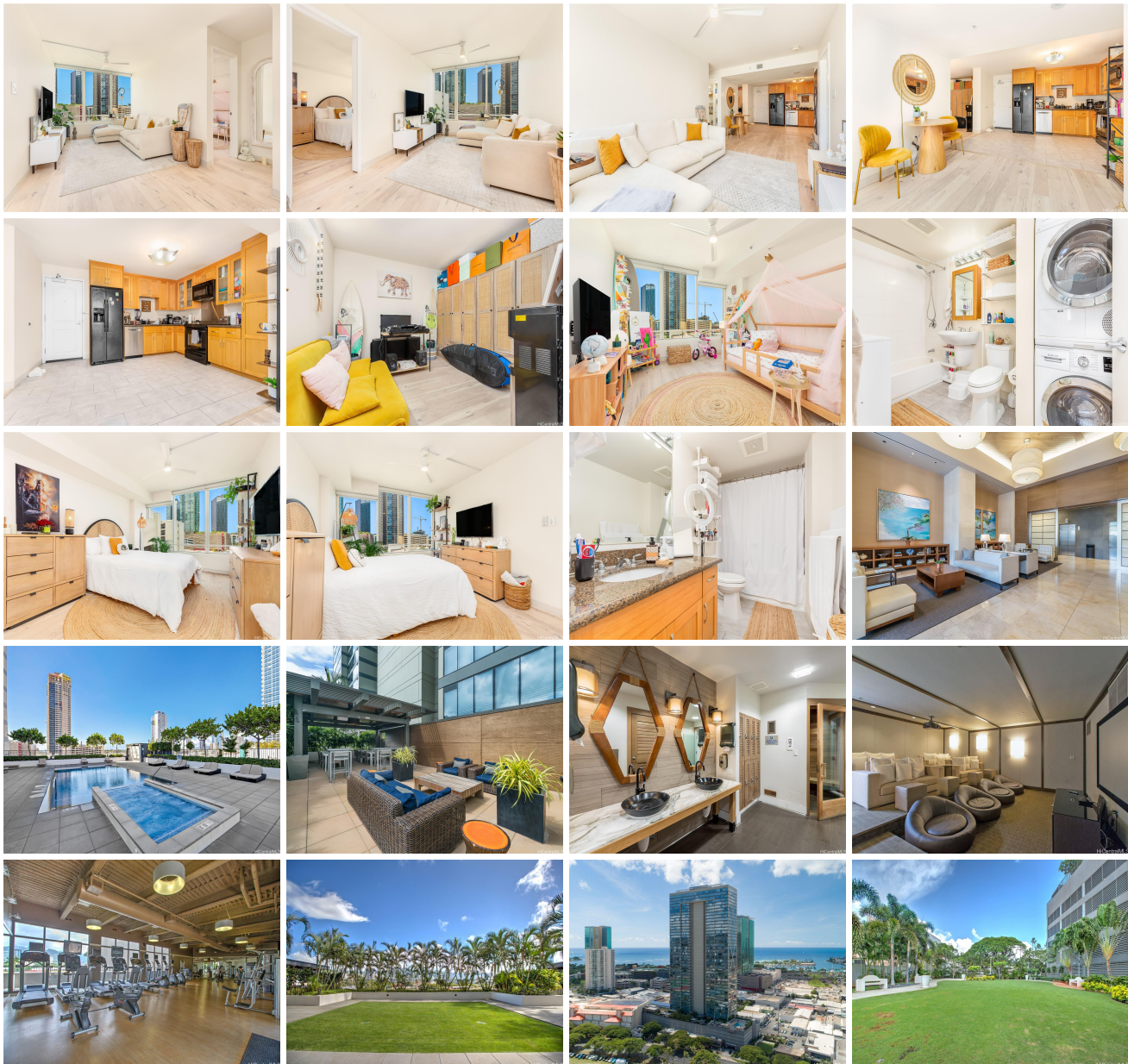


Pacifica Honolulu 1009 Kapiolani Boulevard Unit 806, Honolulu 96814 * Pacifica Honolulu *

\$875,000

Beds: 2 Bath: 2/0 Living Sq. Ft.: 1,033 Land Sq. Ft.: 0 Lanai Sq. Ft.: 0 Sq. Ft. Other: 0 Total Sq. Ft. 1,033 Maint./Assoc. \$1,157 / \$0 Parking: Assigned, Covered - 1, Guest Zoning: Kak - Kakaako Community Development Project	MLS#: 202414301, FS Status: Active List Date & DOM: 06-14-2024 & 12 Condition: Above Average Frontage: Tax/Year: \$264/2024 Neighborhood: Kakaako Flood Zone: Zone X - Tool	Year Built: 2011 Remodeled: Total Parking: 1 Assessed Value Building: \$740,800 Land: \$68,200 Total: \$809,000 Stories / CPR: 21+ / No Frontage: View: City, Ocean
--	---	---

Public Remarks: Over 1000 square feet!!! Enjoy the space of one of the largest 2 bedroom floor plans at Pacifica and in Kakaako. Also comes with a den creating flexibility for a work space, dining area, or even another place to sleep. Guest area, maybe? Being on a lower floor has its perks - no long elevator rides and if you choose to use the stairs, it's easy. Pacifica Honolulu is known for its vast amenities including an infinity pool, jacuzzi, private grassy park, fitness center with Peloton bikes, 2 theaters, BBQ cabanas, and it's pet friendly allowing 2 pets. The award winning staff will put you at ease with 24 hour attentive security. Enjoy restaurants like Chef Chai, Doraku, and Blue Tree just downstairs and many dining, shopping, and recreation options all around you. **Sale Conditions:** None **Schools:** , , * [Request Showing](#), [Photos](#), [History](#), [Maps](#), [Deed](#), [Watch List](#), [Tax Info](#)



Address	Price	Bd & Bth	Living / Avg.	Land Avg.	Lanai	Occ.	FL	DOM
1009 Kapiolani Boulevard 806	\$875,000	2 & 2/0	1,033 \$847	0 \$inf	0	53%	8	12

Address	Tax Maint. Ass.	Assessed Land	Assessed Building	Assessed Total	Ratio	Year & Remodeled
1009 Kapiolani Boulevard 806	\$264 \$1,157 \$0	\$68,200	\$740,800	\$809,000	108%	2011 & NA

[1009 Kapiolani Boulevard 806](#) - MLS#: [202414301](#) - Over 1000 square feet!!! Enjoy the space of one of the largest 2 bedroom floor plans at Pacifica and in Kakaako. Also comes with a den creating flexibility for a work space, dining area, or even another place to sleep. Guest area, maybe? Being on a lower floor has its perks - no long elevator rides and if you choose to use the stairs, it's easy. Pacifica Honolulu is known for its vast amenities including an infinity pool, jacuzzi, private grassy park, fitness center with Peloton bikes, 2 theaters, BBQ cabanas, and it's pet friendly allowing 2 pets. The award winning staff will put you at ease with 24 hour attentive security. Enjoy restaurants like Chef Chai, Doraku, and Blue Tree just downstairs and many dining, shopping, and recreation options all around you. **Region:** Metro **Neighborhood:** Kakaako **Condition:** Above Average **Parking:** Assigned, Covered - 1, Guest **Total Parking:** 1 **View:** City, Ocean **Frontage:** **Pool:** **Zoning:** Kak - Kakaako Community Development Project **Sale Conditions:** None **Schools:** , , * [Request Showing](#), [Photos](#), [History](#), [Maps](#), [Deed](#), [Watch List](#), [Tax Info](#)

DOM = Days on Market, Occ. = Occupancy, FL = Floor Number