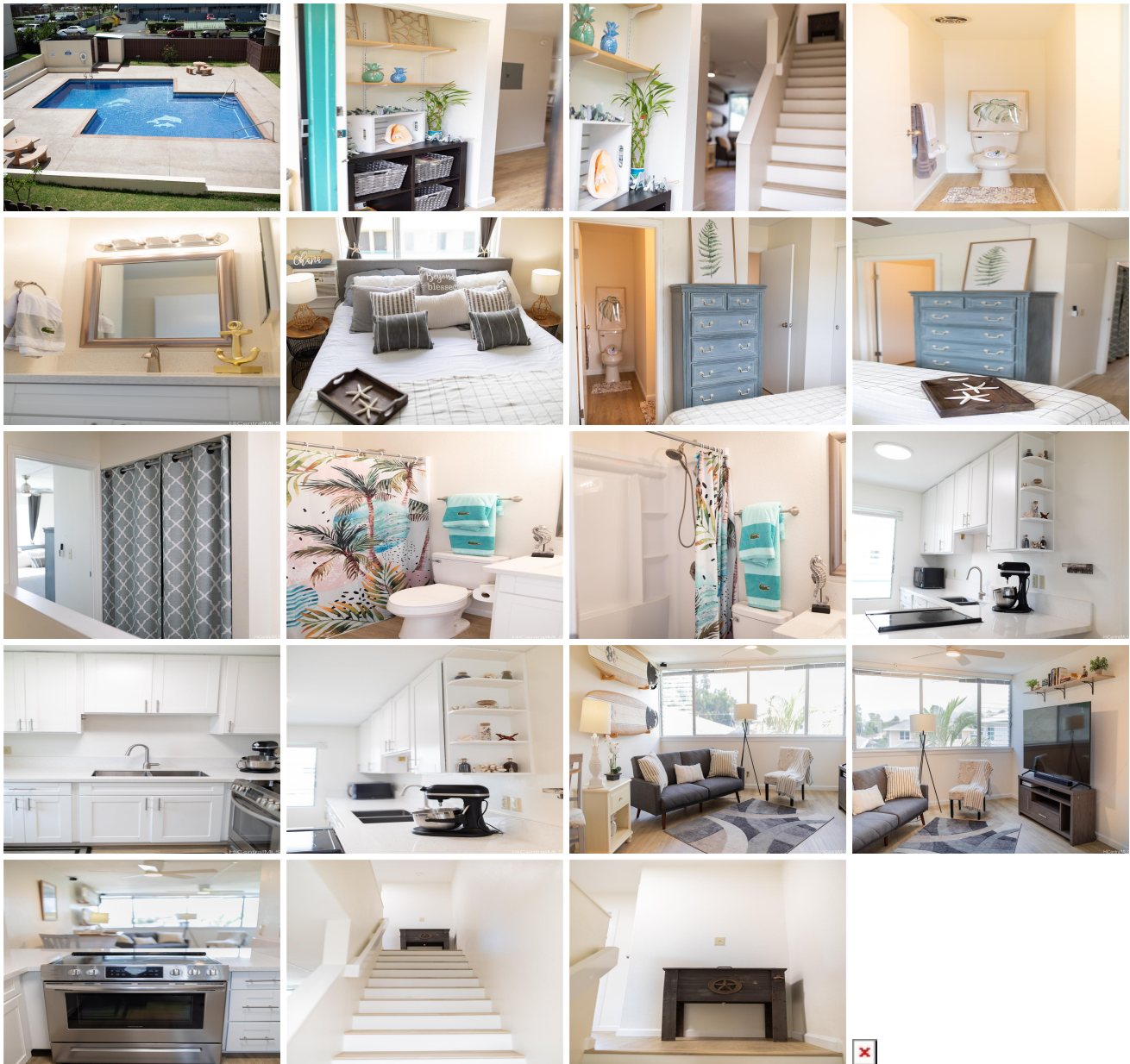


Nani Koolau 46-232 Kahuhipa Street Unit C210, Kaneohe 96744 * Nani Koolau * \$498,888

| | | |
|---|---|---|
| Beds: 2 | MLS#: 202414308, FS | Year Built: 1979 |
| Bath: 1/1 | Status: Active | Remodeled: 2023 |
| Living Sq. Ft.: 900 | List Date & DOM: 06-14-2024 & 14 | Total Parking: 1 |
| Land Sq. Ft.: 84,550 | Condition: Excellent | Assessed Value |
| Lanai Sq. Ft.: 0 | Frontage: Other | Building: \$352,600 |
| Sq. Ft. Other: 0 | Tax/Year: \$59/2023 | Land: \$87,700 |
| Total Sq. Ft. 900 | Neighborhood: Windward Estates | Total: \$440,300 |
| Maint./Assoc. \$504 / \$0 | Flood Zone : Zone D - Tool | Stories / CPR: Two, Split Level / No |
| Parking: Assigned, Guest, Other | Frontage: Other | |
| Zoning : 12 - A-2 Medium Density Apartme | View: Garden, Mountain | |

Public Remarks: Features of this condo include: - Newly renovated corner unit with 2 bedrooms and 1.5 bathrooms - High performance water resistant (pet friendly) vinyl flooring - Fresh coat of paint throughout - Remodeled bathrooms and kitchen - Updated fixtures and airflow - Side by side washer/dryer conveniently located on second floor between bedrooms - Spacious primary bedroom with on suite half bath - Ample storage space - One assigned parking stall - Serene forest and mountain views - Pet-friendly policies - Lovely private guest and owner only Onsite pool - Close to Kaneohe town, Botanical Gardens, hiking trails, Windward Mall, shops, movie theaters, Kaneohe Bay, and military bases very desirable windward community. Don't miss out on the opportunity to experience island living at its finest in this beautifully upgraded condo in Kaneohe. Schedule a viewing today and start enjoying the ALOHA Lux® lifestyle at it's finest! Call Tiffani's Team at Aloha Lux® powered by eXp realty. **Sale Conditions:** None **Schools:** [Heeia](#), [King](#), [Castle](#) * [Request Showing](#), [Photos](#), [History](#), [Maps](#), [Deed](#), [Watch List](#), [Tax Info](#)



| Address | Price | Bd & Bth | Living / Avg. | Land Avg. | Lanai | Occ. | FL | DOM |
|---|---------------------------|----------|---------------|--------------|-------|------|----|-----|
| 46-232 Kahuhipa Street C210 | \$498,888 | 2 & 1/1 | 900 \$554 | 84,550 \$6 | 0 | 51% | 2 | 14 |

| Address | Tax Maint. Ass. | Assessed Land | Assessed Building | Assessed Total | Ratio | Year & Remodeled |
|---|---------------------|---------------|-------------------|----------------|-------|------------------|
| 46-232 Kahuhipa Street C210 | \$59 \$504 \$0 | \$87,700 | \$352,600 | \$440,300 | 113% | 1979 & 2023 |

[46-232 Kahuhipa Street C210](#) - MLS#: [202414308](#) - Features of this condo include: - Newly renovated corner unit with 2 bedrooms and 1.5 bathrooms - High performance water resistant (pet friendly) vinyl flooring - Fresh coat of paint throughout - Remodeled bathrooms and kitchen - Updated fixtures and airflow - Side by side washer/dryer conveniently located on second floor between bedrooms - Spacious primary bedroom with on suite half bath - Ample storage space - One assigned parking stall - Serene forest and mountain views - Pet-friendly policies - Lovely private guest and owner only Onsite pool - Close to Kaneohe town, Botanical Gardens, hiking trails, Windward Mall, shops, movie theaters, Kaneohe Bay, and military bases very desirable windward community. Don't miss out on the opportunity to experience island living at its finest in this beautifully upgraded condo in Kaneohe. Schedule a viewing today and start enjoying the ALOHA Lux® lifestyle at it's finest! Call Tiffani's Team at Aloha Lux® powered by eXp realty. **Region:** Kaneohe **Neighborhood:** Windward Estates **Condition:** Excellent **Parking:** Assigned, Guest, Other **Total Parking:** 1 **View:** Garden, Mountain **Frontage:** Other **Pool:** **Zoning:** 12 - A-2 Medium Density Apartme **Sale Conditions:** None **Schools:** [Heeia](#), [King](#), [Castle](#) * [Request Showing](#), [Photos](#), [History](#), [Maps](#), [Deed](#), [Watch List](#), [Tax Info](#)

DOM = Days on Market, Occ. = Occupancy, FL = Floor Number