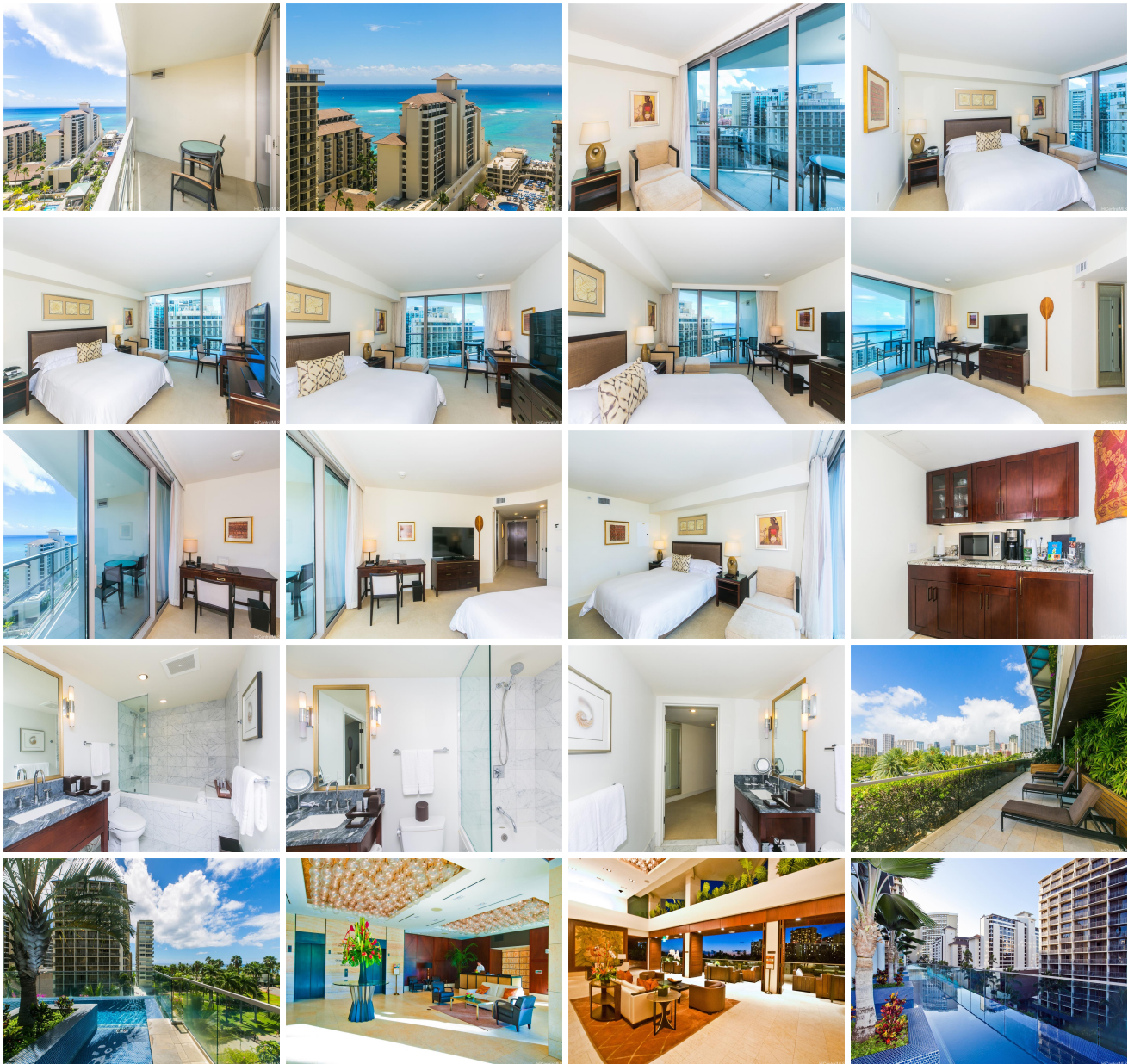


Trump Tower Waikiki 223 Saratoga Road Unit 2006, Honolulu 96815 * \$450,000

Beds: 0	MLS#: 202414322, FS	Year Built: 2009
Bath: 1/0	Status: Active	Remodeled:
Living Sq. Ft.: 355	List Date & DOM: 06-14-2024 & 31	Total Parking: 0
Land Sq. Ft.: 0	Condition: Excellent	Assessed Value
Lanai Sq. Ft.: 75	Frontage:	Building: \$119,700
Sq. Ft. Other: 0	Tax/Year: \$372/2023	Land: \$197,200
Total Sq. Ft. 430	Neighborhood: Waikiki	Total: \$316,900
Maint./Assoc. \$703 / \$0	Flood Zone : Zone AE - Tool	Stories / CPR: 21+ / No
Parking: Guest	Frontage:	
Zoning : X6 - Resort Mixed Use Precinct	View: City, Diamond Head, Ocean	

Public Remarks: Welcome to Trump Tower Waikiki Studio, located in the heart of Honolulu, HI. This exquisite studio condo offers a luxurious and convenient lifestyle. With Studio and 1 bathroom, this modern space is perfect for those seeking a sophisticated urban retreat. As you step inside, you'll be greeted by an elegant and well-designed living area, offering a seamless blend of comfort and style. The open floor plan allows for a versatile living space, perfect for entertaining or simply relaxing after a long day. The condo boasts a range of top-notch amenities, including a refreshing pool and a relaxing Jacuzzi, where you can unwind and soak up the Hawaiian sun. NOTE: THIS IS NOT IN HOTEL POOL. TENANT OCCUPIED. SHOWING MUST BE 2 DAYS IN ADVANCE. **Sale Conditions:** None **Schools:** [Jefferson](#), [Washington](#), [Kaimuki](#) * [Request Showing](#), [Photos](#), [History](#), [Maps](#), [Deed](#), [Watch List](#), [Tax Info](#)





Address	Price	Bd & Bth	Living / Avg.	Land Avg.	DOM
223 Saratoga Road 2006	\$450,000	0 & 1/0	355 \$1,268	0 \$inf	31

Address	Tax Maint. Ass.	Assessed Land	Assessed Building	Assessed Total	Ratio	Year & Remodeled
223 Saratoga Road 2006	\$372 \$703 \$0	\$197,200	\$119,700	\$316,900	142%	2009 & NA

[223 Saratoga Road 2006](#) - MLS#: [202414322](#) - Welcome to Trump Tower Waikiki Studio, located in the heart of Honolulu, HI. This exquisite studio condo offers a luxurious and convenient lifestyle. With Studio and 1 bathroom, this modern space is perfect for those seeking a sophisticated urban retreat. As you step inside, you'll be greeted by an elegant and well-designed living area, offering a seamless blend of comfort and style. The open floor plan allows for a versatile living space, perfect for entertaining or simply relaxing after a long day. The condo boasts a range of top-notch amenities, including a refreshing pool and a relaxing Jacuzzi, where you can unwind and soak up the Hawaiian sun. NOTE: THIS IS NOT IN HOTEL POOL. TENANT OCCUPIED. SHOWING MUST BE 2 DAYS IN ADVANCE. **Region:** Metro **Neighborhood:** Waikiki **Condition:** Excellent **Parking:** Guest **Total Parking:** 0 **View:** City, Diamond Head, Ocean **Frontage:** **Pool:** **Zoning:** X6 - Resort Mixed Use Precinct **Sale Conditions:** None **Schools:** [Jefferson](#), [Washington](#), [Kaimuki](#) * [Request Showing](#), [Photos](#), [History](#), [Maps](#), [Deed](#), [Watch List](#), [Tax Info](#)

DOM = Days on Market