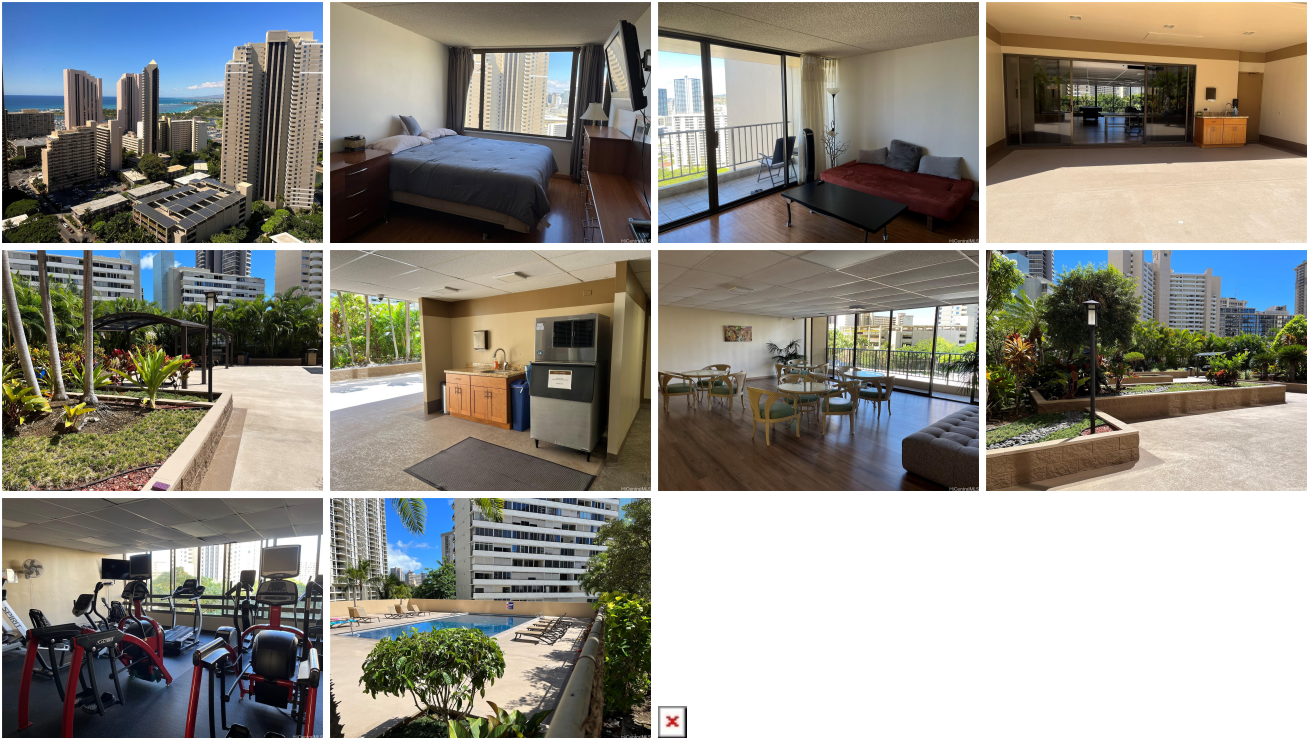


**Chateau Waikiki 411 Hobron Lane Unit 2908, Honolulu 96815 \* \$485,000**

Beds: **1** MLS#: **202414327, FS** Year Built: **1974**  
 Bath: **1/0** Status: **Active Under Contract** Remodeled: **2008**  
 Living Sq. Ft.: **540** List Date & DOM: **06-15-2024 & 26** Total Parking: **1**  
 Land Sq. Ft.: **70,611** Condition: **Above Average** [Assessed Value](#)  
 Lanai Sq. Ft.: **60** Frontage: Building: **\$52,000**  
 Sq. Ft. Other: **0** Tax/Year: **\$134/2023** Land: **\$51,300**  
 Total Sq. Ft. **600** Neighborhood: **Waikiki** Total: **\$408,500**  
 Maint./Assoc. **\$872 / \$0** [Flood Zone](#): **Zone AE - Tool** Stories / CPR: **21+ / No**  
 Parking: **Assigned, Covered - 1, Garage, Guest, Street** Frontage:  
[Zoning](#): **X2 - Apartment Precinct** View: **Ocean, Sunset**

**Public Remarks:** Enjoy lovely sunsets over the ocean from the lanai of this well-kept 29th floor 1 bedroom, 1 bath unit in the highly desirable Chateau Waikiki condominium. Located at the entrance to Waikiki and minutes away from Waikiki and Ala Moana Park, a delightful selection of restaurants and world class shopping. The resort like property includes pool, gym/weight rooms, sauna, BBQ areas, library, party room and 24 hour security. Includes 1 covered assigned parking stall and a storage locker on the same floor. Air-conditioning, electricity and hot water are included in the maintenance fee. Owner has paid off the special assessment that was effective October 1st and ends on December 2024. **Sale Conditions:** None **Schools:** [Jefferson](#), [Washington](#), [Kaimuki](#) \* [Request Showing](#), [Photos](#), [History](#), [Maps](#), [Deed](#), [Watch List](#), [Tax Info](#)



Address	Price	Bd & Bth	Living / Avg.	Land   Avg.	DOM
<a href="#">411 Hobron Lane 2908</a>	<b>\$485,000</b>	1 & 1/0	540   \$898	70,611   \$7	26

Address	Tax   Maint.   Ass.	Assessed Land	Assessed Building	Assessed Total	Ratio	Year & Remodeled
<a href="#">411 Hobron Lane 2908</a>	\$134   \$872   \$0	\$51,300	\$52,000	\$408,500	119%	1974 & 2008

[411 Hobron Lane 2908](#) - MLS#: [202414327](#) - Enjoy lovely sunsets over the ocean from the lanai of this well-kept 29th floor 1 bedroom, 1 bath unit in the highly desirable Chateau Waikiki condominium. Located at the entrance to Waikiki and minutes away from Waikiki and Ala Moana Park, a delightful selection of restaurants and world class shopping. The resort like property includes pool, gym/weight rooms, sauna, BBQ areas, library, party room and 24 hour security. Includes 1 covered assigned parking stall and a storage locker on the same floor. Air-conditioning, electricity and hot water are included in the maintenance fee. Owner has paid off the special assessment that was effective October 1st and ends on December 2024. **Region:** Metro **Neighborhood:** Waikiki **Condition:** Above Average **Parking:** Assigned, Covered - 1, Garage, Guest, Street **Total Parking:** 1 **View:** Ocean, Sunset **Frontage:** Pool: **Zoning:** X2 - Apartment Precinct **Sale Conditions:** None **Schools:** [Jefferson](#), [Washington](#), [Kaimuki](#) \* [Request Showing](#), [Photos](#), [History](#), [Maps](#), [Deed](#), [Watch List](#), [Tax Info](#)

DOM = Days on Market