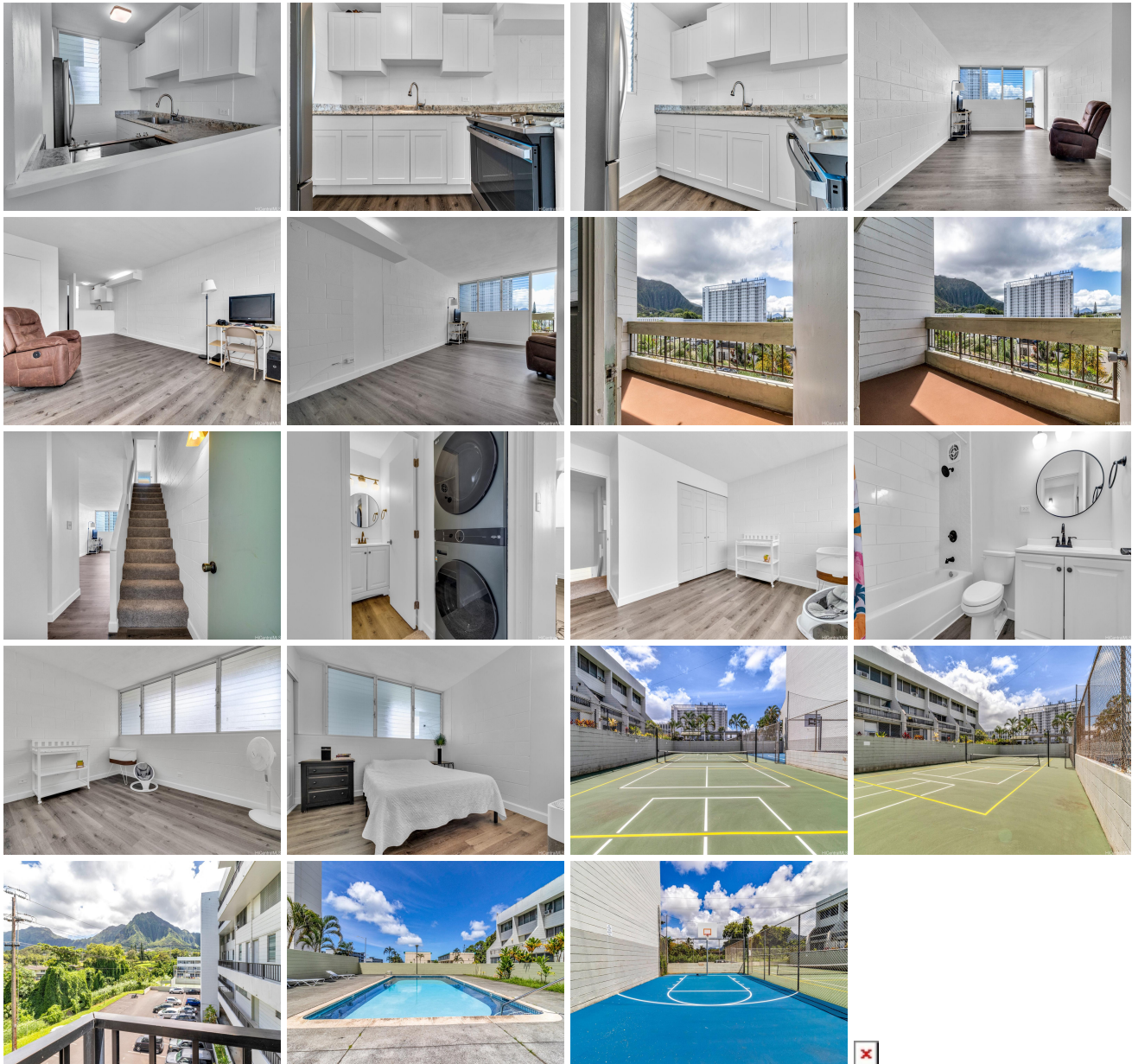


Mountain View Terrace 46-270 Kahuhipa Street Unit A402, Kaneohe 96744 * Mountain View Terrace * \$475,000 * Originally \$485,000

| | | |
|---|---|--------------------------------|
| Beds: 2 | MLS#: 202414336, FS | Year Built: 1974 |
| Bath: 1/0 | Status: Active | Remodeled: 2023 |
| Living Sq. Ft.: 802 | List Date & DOM: 06-15-2024 & 12 | Total Parking: 1 |
| Land Sq. Ft.: 105,415 | Condition: Excellent | Assessed Value |
| Lanai Sq. Ft.: 74 | Frontage: | Building: \$406,500 |
| Sq. Ft. Other: 0 | Tax/Year: \$90/2023 | Land: \$61,100 |
| Total Sq. Ft. 876 | Neighborhood: Windward Estates | Total: \$467,600 |
| Maint./Assoc. \$533 / \$0 | Flood Zone : Zone X - Tool | Stories / CPR: Two / No |
| Parking: Assigned, Open - 1 | Frontage: | |
| Zoning : 12 - A-2 Medium Density Apartme | View: Mountain | |

Public Remarks: Move-In Ready and just completely remodeled! WELCOME HOME! Wake up to incredible Ko'olau Mountain views from this rarely available Mountainview Terrace unit at an affordable price. You will enjoy this split level floor plan. This complete remodel boasts an open kitchen with new appliances, luxury bath, and more (popcorn ceilings have even been removed). Brand new full size front loading washer and dryer are conveniently located in the unit. Pool, tennis and basketball court in complex. This community is located just minutes from Windward Mall, restaurants, schools, District Park, and is a short drive up the coast to beautiful beaches and attractions (hiking, surfing, and easy island living). Kaneohe has easy access to H3/Likelike/Pali hwys making it an ideal commute to anywhere on the island. You don't want to miss this excellent value. **Sale Conditions:** None **Schools:** , , * [Request Showing](#), [Photos](#), [History](#), [Maps](#), [Deed](#), [Watch List](#), [Tax Info](#)



| Address | Price | Bd & Bth | Living / Avg. | Land Avg. | Lanai | Occ. | FL | DOM |
|---|------------------|----------|---------------|---------------|-------|------|----|-----|
| 46-270 Kahuhipa Street A402 | \$475,000 | 2 & 1/0 | 802 \$592 | 105,415 \$5 | 74 | 54% | 4 | 12 |

| Address | Tax Maint. Ass. | Assessed Land | Assessed Building | Assessed Total | Ratio | Year & Remodeled |
|---|---------------------|---------------|-------------------|----------------|-------|------------------|
| 46-270 Kahuhipa Street A402 | \$90 \$533 \$0 | \$61,100 | \$406,500 | \$467,600 | 102% | 1974 & 2023 |

[46-270 Kahuhipa Street A402](#) - MLS#: [202414336](#) - Original price was \$485,000 - Move-In Ready and just completely remodeled! WELCOME HOME! Wake up to incredible Ko'olau Mountain views from this rarely available Mountainview Terrace unit at an affordable price. You will enjoy this split level floor plan. This complete remodel boasts an open kitchen with new appliances, luxury bath, and more (popcorn ceilings have even been removed). Brand new full size front loading washer and dryer are conveniently located in the unit. Pool, tennis and basketball court in complex. This community is located just minutes from Windward Mall, restaurants, schools, District Park, and is a short drive up the coast to beautiful beaches and attractions (hiking, surfing, and easy island living). Kaneohe has easy access to H3/Likelike/Pali hwy's making it an ideal commute to anywhere on the island. You don't want to miss this excellent value. **Region:** Kaneohe **Neighborhood:** Windward Estates **Condition:** Excellent **Parking:** Assigned, Open - 1 **Total Parking:** 1 **View:** Mountain **Frontage:** **Pool:** **Zoning:** 12 - A-2 Medium Density Apartme **Sale Conditions:** None **Schools:** , , * [Request Showing](#), [Photos](#), [History](#), [Maps](#), [Deed](#), [Watch List](#), [Tax Info](#)

DOM = Days on Market, Occ. = Occupancy, FL = Floor Number