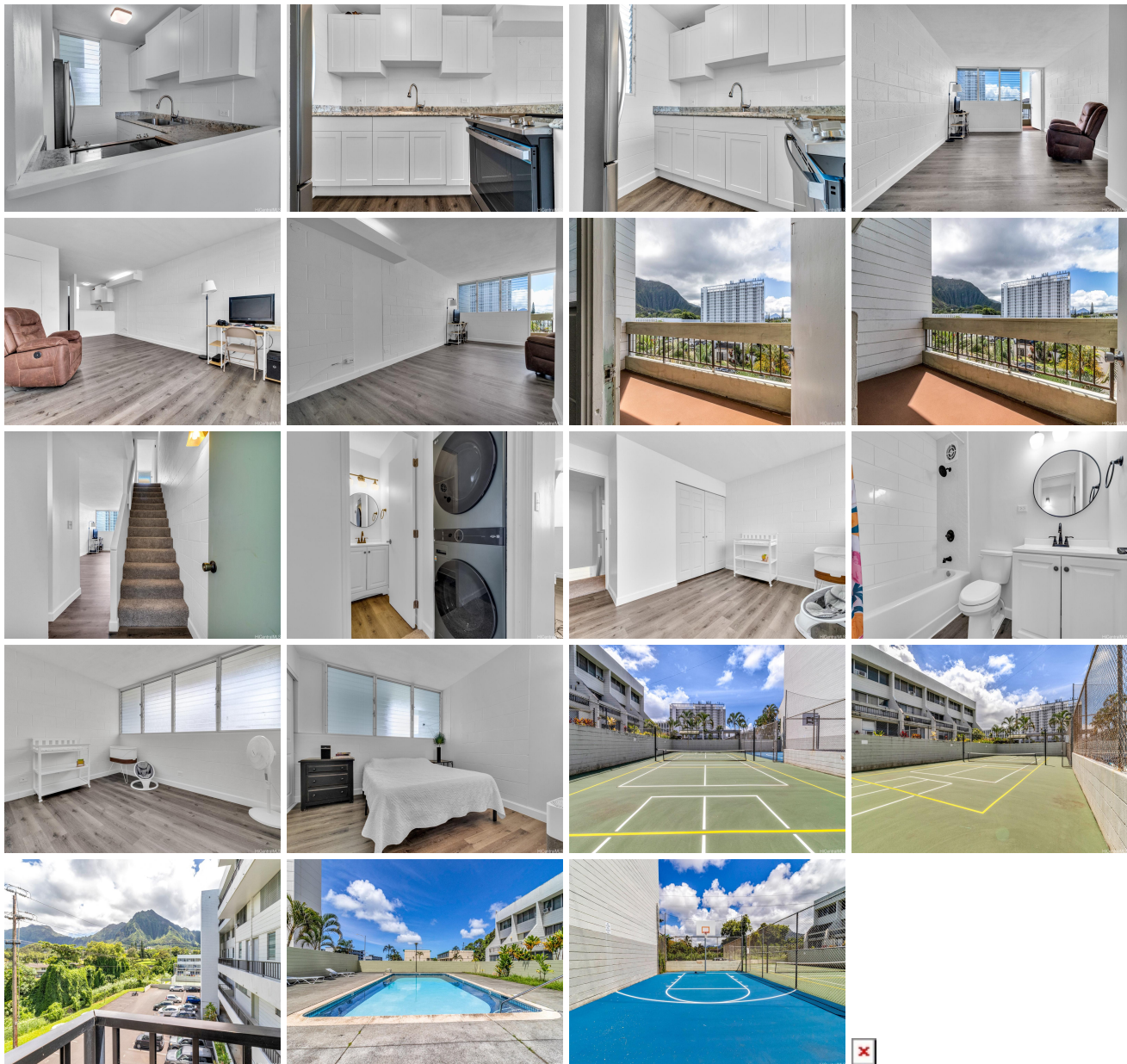


Mountain View Terrace 46-270 Kahuhipa Street Unit A402, Kaneohe 96744 * \$475,000 *

Originally \$485,000

Beds: 2	MLS#: 202414336, FS	Year Built: 1974
Bath: 1/0	Status: Active	Remodeled: 2023
Living Sq. Ft.: 802	List Date & DOM: 06-15-2024 & 28	Total Parking: 1
Land Sq. Ft.: 105,415	Condition: Excellent	Assessed Value
Lanai Sq. Ft.: 74	Frontage:	Building: \$406,500
Sq. Ft. Other: 0	Tax/Year: \$90/2023	Land: \$61,100
Total Sq. Ft. 876	Neighborhood: Windward Estates	Total: \$467,600
Maint./Assoc. \$533 / \$0	Flood Zone : Zone X - Tool	Stories / CPR: Two / No
Parking: Assigned, Open - 1	Frontage:	
Zoning : 12 - A-2 Medium Density Apartme	View: Mountain	

Public Remarks: Move-In Ready and just completely remodeled! WELCOME HOME! Wake up to incredible Ko'olau Mountain views from this rarely available Mountainview Terrace unit at an affordable price. You will enjoy this split level floor plan. This complete remodel boasts an open kitchen with new appliances, luxury bath, and more (popcorn ceilings have even been removed). Brand new full size front loading washer and dryer are conveniently located in the unit. Pool, tennis and basketball court in complex. This community is located just minutes from Windward Mall, restaurants, schools, District Park, and is a short drive up the coast to beautiful beaches and attractions (hiking, surfing, and easy island living). Kaneohe has easy access to H3/Likelike/Pali hwys making it an ideal commute to anywhere on the island. You don't want to miss this excellent value. **Sale Conditions:** None **Schools:** , , * [Request Showing](#), [Photos](#), [History](#), [Maps](#), [Deed](#), [Watch List](#), [Tax Info](#)



Address	Price	Bd & Bth	Living / Avg.	Land Avg.	DOM
46-270 Kahuhipa Street A402	\$475,000	2 & 1/0	802 \$592	105,415 \$5	28

Address	Tax Maint. Ass.	Assessed Land	Assessed Building	Assessed Total	Ratio	Year & Remodeled
46-270 Kahuhipa Street A402	\$90 \$533 \$0	\$61,100	\$406,500	\$467,600	102%	1974 & 2023

[46-270 Kahuhipa Street A402](#) - MLS#: [202414336](#) - Original price was \$485,000 - Move-In Ready and just completely remodeled! WELCOME HOME! Wake up to incredible Ko'olau Mountain views from this rarely available Mountainview Terrace unit at an affordable price. You will enjoy this split level floor plan. This complete remodel boasts an open kitchen with new appliances, luxury bath, and more (popcorn ceilings have even been removed). Brand new full size front loading washer and dryer are conveniently located in the unit. Pool, tennis and basketball court in complex. This community is located just minutes from Windward Mall, restaurants, schools, District Park, and is a short drive up the coast to beautiful beaches and attractions (hiking, surfing, and easy island living). Kaneohe has easy access to H3/Likelike/Pali hwy's making it an ideal commute to anywhere on the island. You don't want to miss this excellent value. **Region:** Kaneohe **Neighborhood:** Windward Estates **Condition:** Excellent **Parking:** Assigned, Open - 1 **Total Parking:** 1 **View:** Mountain **Frontage:** **Pool:** **Zoning:** 12 - A-2 Medium Density Apartme **Sale Conditions:** None **Schools:** , , * [Request Showing](#), [Photos](#), [History](#), [Maps](#), [Deed](#), [Watch List](#), [Tax Info](#)

DOM = Days on Market