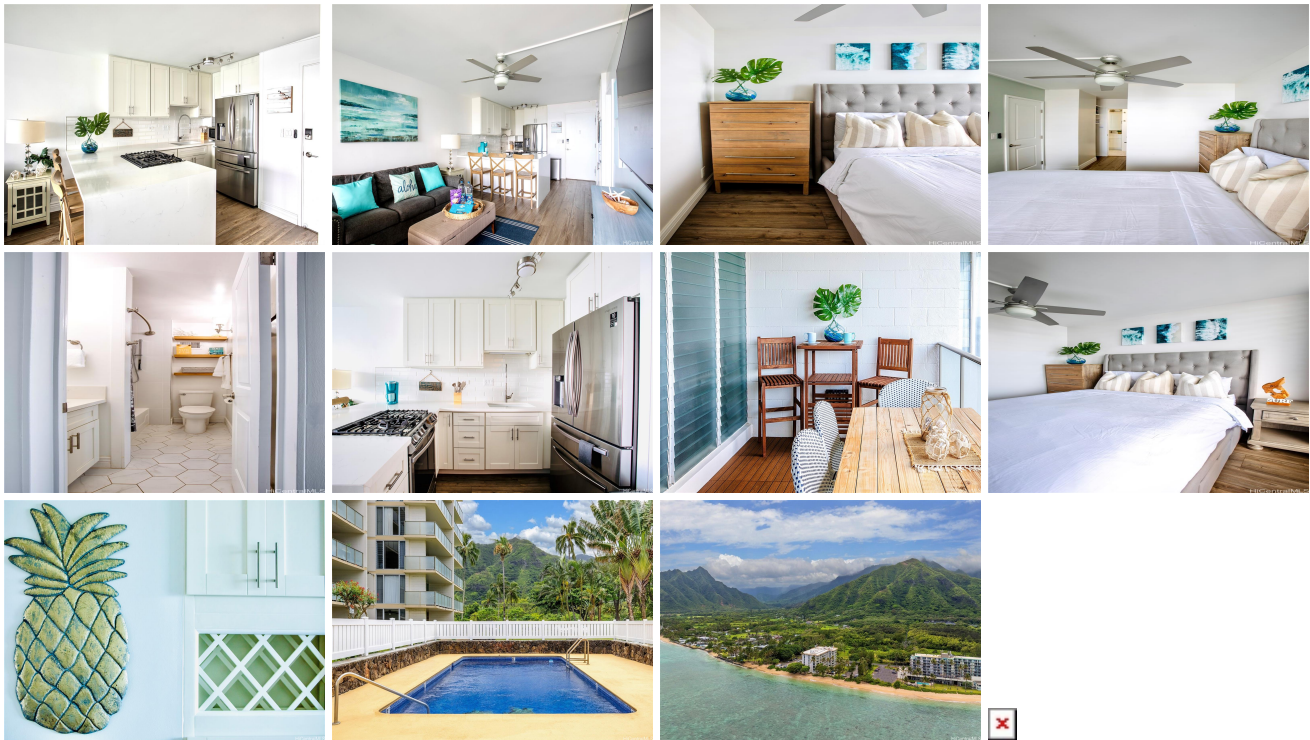


Hanohano hale 53-549 Kamehameha Highway Unit 703, Hauula 96717 * Hanohano hale *

\$419,000

Beds: 1	MLS#: 202414361, FS	Year Built: 1973
Bath: 1/0	Status: Active	Remodeled: 2023
Living Sq. Ft.: 475	List Date & DOM: 06-19-2024 & 24	Total Parking: 1
Land Sq. Ft.: 114,868	Condition: Above Average	Assessed Value
Lanai Sq. Ft.: 158	Ocean, Sandy Beach, Waterfront	Building: \$56,800
Sq. Ft. Other: 0	Tax/Year: \$41/2023	Land: \$83,400
Total Sq. Ft. 633	Neighborhood: Punaluu	Total: \$140,200
Maint./Assoc. \$1,125 / \$0	Flood Zone : Zone AE - Tool	Stories / CPR: One, 4-7 / No
Parking: Assigned, Open - 1	Frontage: Ocean, Sandy Beach, Waterfront	View: Coastline, Garden, Mountain, Ocean
Zoning : 12 - A-2 Medium Density Apartme		

Public Remarks: Oceanfront Penthouse sold fully furnished! Top floor, meticulously remodeled to reflect a tropical oasis. Indulge in the ultimate Hawaii lifestyle. Direct ocean view from every room! Your very own piece of waterfront paradise awaits for you on the North Shore of Oahu. This stunning, newly remodeled 1 bdrm, 1 bath condo unit is fully furnished and boasts luxurious finishes making it perfect for residing in full-time, part-time or for an income producing rental. Sit peacefully on your expansive, private lanai with direct views of the Pacific Ocean and swaying palm trees. Sleep soundly to waves lapping on the sand. Tastefully designed in a casual coastal aesthetic. Custom cabinetry, oversized waterfall peninsula in kitchen. Minutes from Kualoa Ranch, Polynesian Cultural Center, BYU & famous Haleiwa! Close to local eateries, grocery stores and attractions. Within walking distance of several food trucks, convenience store and cafe. 1 assigned parking space comes with the apartment. The beachfront complex offers ample seating areas, community pool, and bbq / picnic area. A perfect place for paradise living. **Sale Conditions:** None **Schools:** , , * [Request Showing](#), [Photos](#), [History](#), [Maps](#), [Deed](#), [Watch List](#), [Tax Info](#)



Address	Price	Bd & Bth	Living / Avg.	Land Avg.	Lanai	Occ.	FL	DOM
53-549 Kamehameha Highway 703	\$419,000	1 & 1/0	475 \$882	114,868 \$4	158	30%	7	24

Address	Tax Maint. Ass.	Assessed Land	Assessed Building	Assessed Total	Ratio	Year & Remodeled
53-549 Kamehameha Highway 703	\$41 \$1,125 \$0	\$83,400	\$56,800	\$140,200	299%	1973 & 2023

[53-549 Kamehameha Highway 703](#) - MLS#: [202414361](#) - Oceanfront Penthouse sold fully furnished! Top floor, meticulously remodeled to reflect a tropical oasis. Indulge in the ultimate Hawaii lifestyle. Direct ocean view from every room! Your very own piece of waterfront paradise awaits for you on the North Shore of Oahu. This stunning, newly remodeled 1 bdrm, 1 bath condo unit is fully furnished and boasts luxurious finishes making it perfect for residing in full-time, part-time or for an income producing rental. Sit peacefully on your expansive, private lanai with direct views of the Pacific Ocean and swaying palm trees. Sleep soundly to waves lapping on the sand. Tastefully designed in a casual coastal aesthetic. Custom cabinetry, oversized waterfall peninsula in kitchen. Minutes from Kualoa Ranch, Polynesian Cultural Center, BYU & famous Haleiwa! Close to local eateries, grocery stores and attractions. Within walking distance of several food trucks, convenience store and cafe. 1 assigned parking space comes with the apartment. The beachfront complex offers ample seating areas, community pool, and bbq / picnic area. A perfect place for paradise living. **Region:** Kaneohe **Neighborhood:** Punaluu **Condition:** Above Average **Parking:** Assigned, Open - 1 **Total Parking:** 1 **View:** Coastline, Garden, Mountain, Ocean **Frontage:** Ocean,Sandy Beach,Waterfront **Pool:** **Zoning:** 12 - A-2 Medium Density Apartme **Sale Conditions:** None **Schools:** , , * [Request Showing](#), [Photos](#), [History](#), [Maps](#), [Deed](#), [Watch List](#), [Tax Info](#)

DOM = Days on Market, Occ. = Occupancy, FL = Floor Number