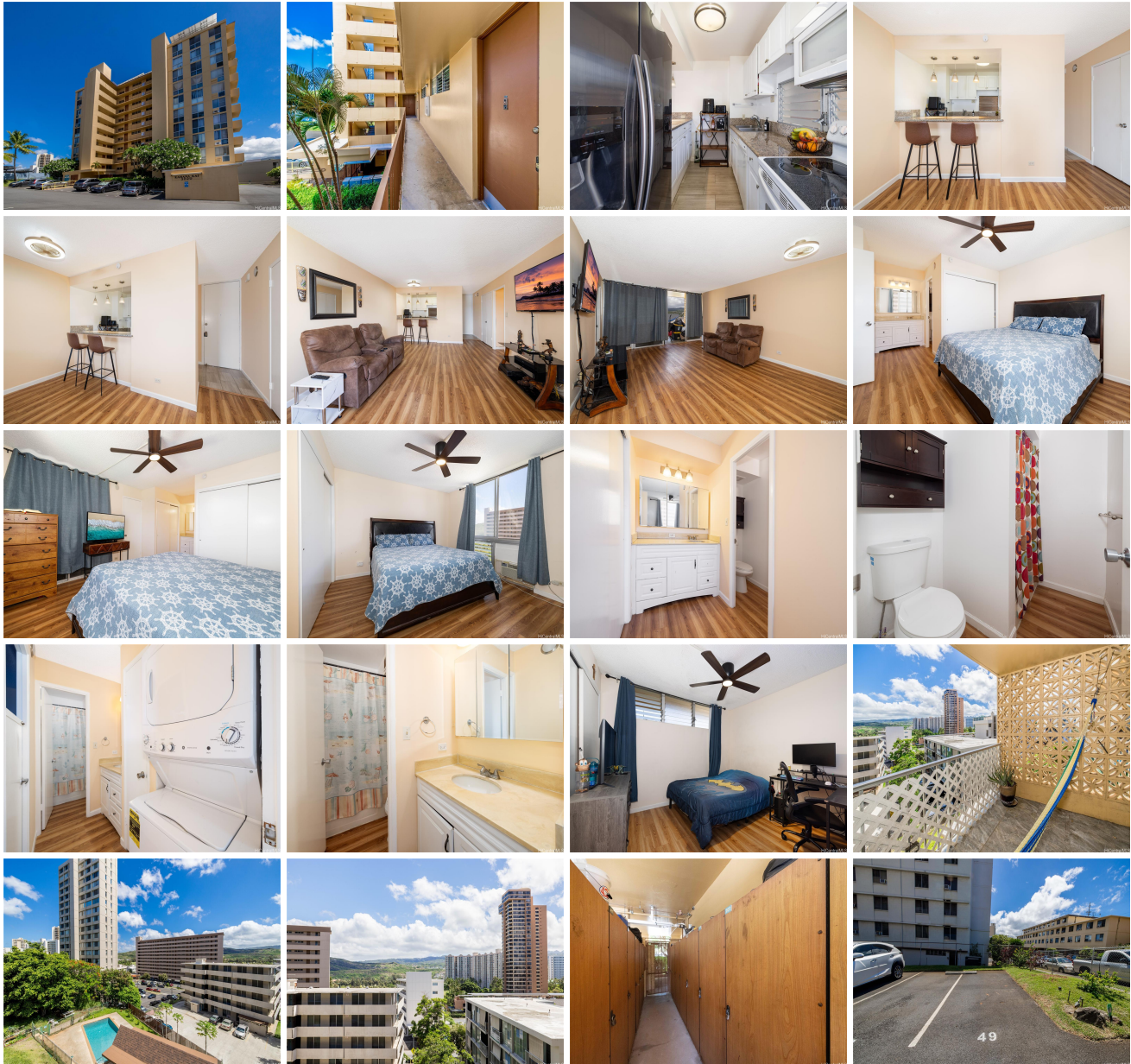


Kahana Kai 3020 Ala Napuaa Place Unit 202, Honolulu 96818 * Kahana Kai * \$565,000

Beds: 2	MLS#: 202414369, FS	Year Built: 1971
Bath: 2/0	Status: Active	Remodeled:
Living Sq. Ft.: 901	List Date & DOM: 06-17-2024 & 11	Total Parking: 1
Land Sq. Ft.: 34,979	Condition: Average	Assessed Value
Lanai Sq. Ft.: 102	Frontage: Other	Building: \$378,200
Sq. Ft. Other: 0	Tax/Year: \$139/2023	Land: \$97,400
Total Sq. Ft. 1,003	Neighborhood: Salt Lake	Total: \$475,600
Maint./Assoc. \$816 / \$0	Flood Zone : Zone X - Tool	Stories / CPR: 8-14 / No
Parking: Guest, Open - 1, Street	Frontage: Other	
Zoning : 12 - A-2 Medium Density Apartme	View: Mountain	

Public Remarks: VA ASSUMABLE LOAN AT 2.625%! Welcome to The Kahana Kai. This charming 2-bedroom, 2-bathroom condo offers the perfect blend of comfort and convenience. Situated in a rarely available building, this gem provides the perfect canvas for your personal touches. The kitchen boasts ample cabinet space, along with all your necessary appliances including a microwave hood to save counter space and a dishwasher. A breakfast bar offers additional seating, perfect for casual dining or enjoying your morning coffee. This home also has in-unit full sized washer and dryer. Both bedrooms are generously sized, and the primary bedroom features an ensuite bathroom for added privacy and convenience. This condo also offers a large, private lanai with a view of your community pool. Access to H1 and H3 freeways are under 2 minutes away. Come experience the peace and quiet, safety and convenience of The Kahana Kai! **Sale Conditions:** None **Schools:** , [Moanalua](#), [Moanalua](#) * [Request Showing](#), [Photos](#), [History](#), [Maps](#), [Deed](#), [Watch List](#), [Tax Info](#)





Address	Price	Bd & Bth	Living / Avg.	Land Avg.	Lanai	Occ.	FL	DOM
3020 Ala Napuaa Place 202	\$565,000	2 & 2/0	901 \$627	34,979 \$16	102	79%	1	11

Address	Tax Maint. Ass.	Assessed Land	Assessed Building	Assessed Total	Ratio	Year & Remodeled
3020 Ala Napuaa Place 202	\$139 \$816 \$0	\$97,400	\$378,200	\$475,600	119%	1971 & NA

[3020 Ala Napuaa Place 202](#) - MLS#: [202414369](#) - VA ASSUMABLE LOAN AT 2.625%! Welcome to The Kahana Kai. This charming 2-bedroom, 2-bathroom condo offers the perfect blend of comfort and convenience. Situated in a rarely available building, this gem provides the perfect canvas for your personal touches. The kitchen boasts ample cabinet space, along with all your necessary appliances including a microwave hood to save counter space and a dishwasher. A breakfast bar offers additional seating, perfect for casual dining or enjoying your morning coffee. This home also has in-unit full sized washer and dryer. Both bedrooms are generously sized, and the primary bedroom features an ensuite bathroom for added privacy and convenience. This condo also offers a large, private lanai with a view of your community pool. Access to H1 and H3 freeways are under 2 minutes away. Come experience the peace and quiet, safety and convenience of The Kahana Kai!

Region: Metro **Neighborhood:** Salt Lake **Condition:** Average **Parking:** Guest, Open - 1, Street **Total Parking:** 1 **View:** Mountain **Frontage:** Other **Pool:** **Zoning:** 12 - A-2 Medium Density Apartme **Sale Conditions:** None **Schools:** , [Moanalua](#), [Moanalua](#) * [Request Showing](#), [Photos](#), [History](#), [Maps](#), [Deed](#), [Watch List](#), [Tax Info](#)

DOM = Days on Market, Occ. = Occupancy, FL = Floor Number